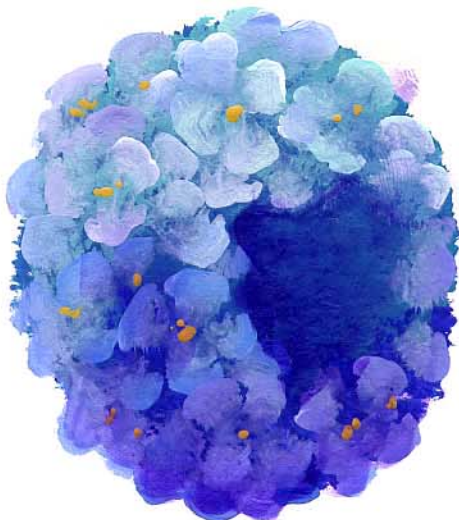
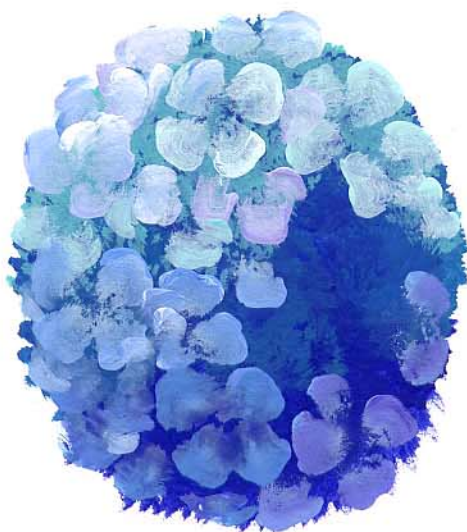




friends
FRIENDSHIP
friends
FRIENDS FRIENDS
giving
SHARING
laughter FRIENDS
LOVING
FRIENDS

Life is nothing without friendship
LICERO





Hydrangea Friendship Canvas

Designed by Chris Thornton-Deason

www.ChrisThorntonDesigns.com

Description: The easiest way to say you are my special friend is through a gift from the heart. Delta Creative's wonderful array of colors is the best way to make this feeling a reality.

Usage: Ceramcoat and Decoupage Medium

Occasion: Gift

Delta Creative Ceramcoat® Acrylics

Blue Bayou 2588

Turquoise 2012

Purple 2015

Laguna Blue 2148

Cricket 2586

White 2505

Dark Chocolate 2021

Straw 2078

Medium Foliage Green 2536

Gamal Green 2120

Spring Green 2517

Red Iron Oxide 2020

Delta Creative Ceramcoat® Satin Decoupage Medium 7020

Delta Creative Ceramcoat® Satin Exterior/Interior Varnish 7003

Surfaces

14"x14" canvas available www.masterpiecearts.com

1 sheet Friendship paper available Michael's

Brushes

Loew-Cornell La-Corneille Golden Taklon

www.loewcornell.com

Series 7350 1" glaze brush

Series 7300 Shader #4, 6 and 12

Series 7050 Script Liner #1

Loew Cornell Products

Palette paper

Water container

Tracing Paper

Transfer Paper

Miscellaneous Supplies

Paper towels

Scissors

Stylus

Preparation

Canvas does not require any preparation.

Instructions Background

Basecoat the entire canvas including the sides in a mix of equal parts Blue Bayou and Purple using 1" glaze brush. While this is still wet using the same brush add a little extra purple to the upper right

hand corner and down right side of the canvas. Allow to dry. **Tip:** to basecoat is total opaque coverage. Two thin coats are preferable; this keeps you from ending up with streaky thick paint. A good tip is to load brush, never more than halfway up bristles. Start in center of area to be painted, pushing color out to pattern line. This technique will leave no ridges.

Decoupage

Apply coat of Decoupage Medium to where the paper will be adhered; allow to dry for about 30 minutes.

Apply even coat of Decoupage Medium to the back of the Friendship paper. Press down firmly, pressing from the center out in all directions. This will push the air bubbles out to the edges. A few wrinkles add a little character to the finished piece.

Transferring Pattern

Lay tracing paper over pattern and trace all lines except those used to denote shadows. The shadow lines are generally short straight lines and several of them. Main lines are where there are color changes. Detail lines are facial features, patterns on fabric, and etc. Lay tracing on surface and tape at top and on one side. Slide graphite paper between tracing and surface with the dark side down; draw over the main lines only. Do not add the detail lines these will be applied after the basecoating is done. Apply pattern.

Leaves

Basecoat all leaves in Medium Foliage Green using #12 shader.

Float shadows along the bottom side and through the center above the curve of the line in Gamal Green using the #12 shader. **Tip:** to float load brush first in floating medium or water, pat off excess on paper towel. Dip one corner of brush in color, blend color through bristles using short back and forth motion on palette. Color should graduate from heavy color on one corner to no color on opposite corner. If when you begin to paint, you have color showing from both sides of brush, it is improperly loaded. Rinse and start again.

Float the highlights on the upper edge and through the center touching the shadow in Spring Green using the same brush; reinforce the highlights with Cricket plus a touch of Spring Green.

Lightly reinforce dark shadows at the base of each leaf in purple using the #12 shader.

Hydrangea

Stipple the full hydrangea in Laguna Blue using the large old fluffy brush; while this is still wet add touches of Turquoise to the light side and the Blue Bayou plus a touch of Purple to the dark side. **Tip:** Stippling can be done with many tools, stippling brush, old fluffy brush, sponge or plastic wrap. First load the tool of choice in color, pat on palette to remove excess color and then pat on surface. Use straight up and down patting motion when applying the color to surface. Should have an airy look with background color showing through.

On pallet put out small amount of Turquoise, White, Blue Bayou and Purple. Starting on the light side of the flower pick up White and Turquoise blend on palette and then stroke a few individual petals. Randomly pick up any of the four colors keeping the darker colors to the darker side of the flower ball. There is no right or wrong the more random your coloring is the more interest your flower will have.

Dab a few centers with Straw using the #1 liner.

Float very lightly over the darker side and inside of flower with Purple using #12 shader.

Stroke a few bright White highlight petals on bright side of the flower using the #6 shader.

Branches

Stroke branches in mix of 1:Dark Chocolate to 1:White using the #1 liner.

Float the shadows with Dark Chocolate using the #4 shader.

Float the highlights by adding more White to base mix using the #4 shader.

To Finish

Apply as many coats of Satin Varnish to the entire piece as desired using the 1" wash brush.

Skill Level: Advanced