



Sunset Seascape Suitcase

Designed By: Diane Bunker
Time to complete: 5 hours

Level: Beginner/Intermediate



Materials List:

Loew-Cornell® Brushes:

7050-18/0, 2 LaCorneille Liner
7120-1/4" LaCorneille Rake
7550-1 1/2" LaCorneille Wash (2)

Palette:

DecoArt Americana:

Cadmium Yellow	Cadmium Orange
Santa Red	Midnite Blue
Black Green	White
Faux Glaze Medium	

Surface:

Vintage Suitcase (Our's measures 18"Wx21"Hx7.5"D)

Additional Supplies:

Loew-Cornell:

398 Palette Paper 384 Brush Tub II
392 White Transfer Paper

Satin Varnish, J.W.'s Under Cover, Scotch Magic Tape

Instructions:

Read all instructions before beginning your project. Refer to photo for placement.

Tip: I use 2 large brushes for my background, one for my Faux Glaze only, and one for paint plus Faux Glaze if needed. This will allow you more time to play in the paint and less cleaning of the brush.

Surface Preparation:

Clean your suitcase with soap and water to remove dirt and oils. Cover suitcase with J.W.'s Under Cover. Base suitcase with at least 2 coats of Cad. Orange.

Painting the Design:

Make these mixes...

- #1 Cad Orange + Faux Glaze 1.1
- #2 Cad Yellow + Faux Glaze 1.1
- #3 Cad Orange + Santa Red + Faux Glaze 1.1.1
- #4 Santa Red + Mid. Blue + White + Faux Glaze 3.1.1/2.1
- #5 Santa Red + Midnite + Faux Glaze 2.1
- #6 Blk Green + Faux Glaze

You will do the sky first and then you will mirror these colors a bit in the water.

Sky:

Add Faux Glaze to the upper sky area (you will be adding Faux Glaze as you get areas finished). Begin with #1 mix and pick up some #4 and blend together

add more #1 and go into a little #3. Add more glaze below and continue. #1 then #3, now #2 but keep the light mix centered a bit. Add more glaze and continue. #3, #4, #1, #5 can be added where you want a little darkness Just play until you like it.

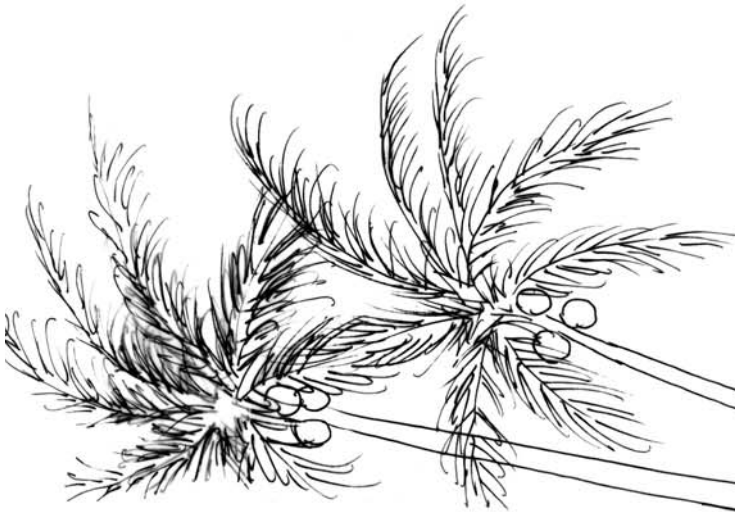
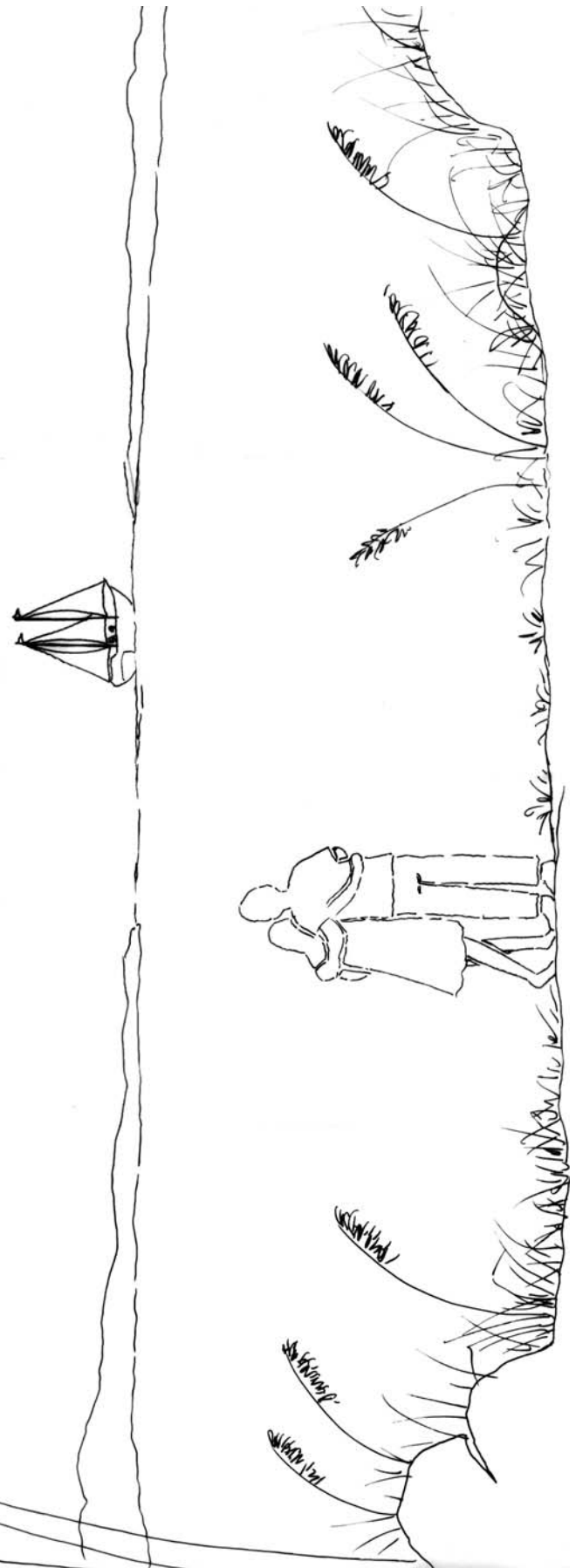
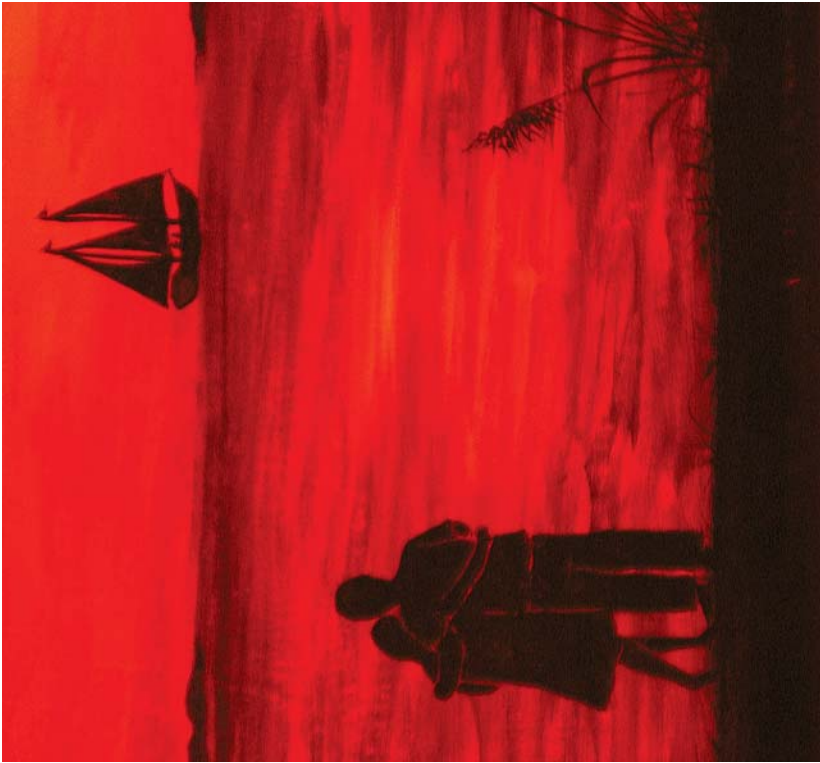
Water: Brush on Faux Glaze, then #1, next #2 in a small area, #3, #4, and a little #5. Now with your dirty brush (you should have #4 in your brush) side load and apply on the chisel #6 to make the water look choppy and dark. Let dry.

Paint everything left with *Black Green*. Start with the ground, rocks, grass, wheat tops, trees, distant land, boat, and last, the couple. Notice there is still some ocean showing through on the couple. (To make the people stand out more, leave slivers of color showing through them, dividing their arms, clothes, and body parts).

Paint the sides and back of the suitcase with *Midnite Blue + Santa Red + White* (or any color you like). Paint the details on the sides with *Black Green*. Highlight a bit with *Black Green + White*.

Tape off the front, back, and sides of the suitcase with the magic tape. Paint trim, handle, and hardware with *Black Green*.

Varnish with 3 coats of Satin Varnish. Let dry.



Pattern shown at 25% of actual size. Reduce or enlarge according to the size of your suitcase.



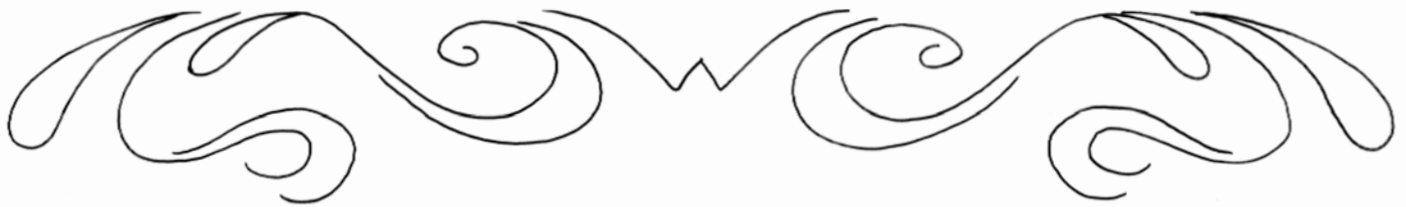
Copyright 2005. Loew-Cornell, Inc., 400 Sylvan Ave. Englewood Cliffs, NJ 07632
These instructions are presented in good faith. However, no warranty of any kind is made with respect to such information nor are any results guaranteed. Always read instructions for the products you are working with.
Loew-Cornell, Inc. is a division of Jarden Corp. (NYSE:JAH)

www.loew-cornell.com

Side View



Pattern shown at 25% of actual size. Reduce or enlarge according to the size of your suitcase.



Diane Bunker has been painting for 20 years. She began designing shortly after learning to paint. She does 4 trade shows a year, selling pattern packets and kits for her designs. Diane's designs have been published in many prominent painting magazines.

Contact Diane at TinyDzyns@aol.com



Copyright 2005. Loew-Cornell, Inc., 400 Sylvan Ave. Englewood Cliffs, NJ 07632

These instructions are presented in good faith. However, no warranty of any kind is made with respect to such information nor are any results guaranteed. Always read instructions for the products you are working with.

Loew-Cornell, Inc. is a division of Jarden Corp. (NYSE:JAH)

www.loew-cornell.com

PS 05/06