

# Spring's View

by Debby Forshey-Choma



the Artist's Club

# Spring's View

By Debby Forshey-Choma

---

## Palette:

### DecoArt Americana Acrylics

Blue Harbor #13283

Cool White #13240

Evergreen #13082

Forest Green #13050

Hauser Light Green #13131

Marigold #13194

Peony Pink #13215

Red Iron Oxide #13096

Snow (Titanium) White

Warm White #13239

Bubblegum Pink #13244

Deep Midnight Blue #13166

Fawn #13242

Graphite #13161

Lavender #13034

Milk Chocolate #13174

Purple Cow #13262

Slate Grey #13068

Soft Blue #13210

### Americana Décor – Chalky Finish Paints

Everlasting #15100

Vintage #15396

## Surface:

Rectangle Shelf w/insert #62832

Extra Inserts #62833

## Misc. Supplies:

DecoArt DuraClear Varnish – Matte #87395

DecoArt MultiPurpose Sealer #87392

Americana Décor Ultra Matte Varnish #72011

Gray Graphite Paper #70141

Soft Grip Embossing & Stylus – set of 3 #70125

Palette Knife #70194

C-Thru Graph Ruler

White Candle

Optional:

Drill, 3/16" Drill Bit

Drawer Knobs of Choice (3)

Glass, Metal & More Premium Permanent Glue; Beacon Hill Adhesives; [www.beaconadhesives.com](http://www.beaconadhesives.com)

## Brushes:

I have used Royal Brushes for this project. Comparable Papillon by the Artist's Club brushes and Artist Inspired Brushes are in parentheses.

#1360 – small, medium & large Debby's Texture brushes (Loew-Cornell Angular Bristle Brushes, size ¼" #27197; size ½" #27198; size ¾" #27199)

#1400 – ¾ SG White Blending Mop (Maxine Thomas Mop, size ¾" #27181)

#3085 – 1" Langnickel Combo (Varnish Set #20170)

#4150 – 0, 2, 4, 6, 8, 12 (Shader, size 0 #20123; size 2 #20125; size 4 #20126; size 6 #20127; size 8 #20129; size 12 #20131)

#4160 – 5/8 Majestic Angular (Angular Shader, size 5/8" #20112)

#4170 – 6, 8 Majestic Filberts (Filbert, size 6 #20118; size 8 #20119)

#4585 5/0, 0 Majestic Liners (Script Liner, size 6/0 #20138; Liner, size 0 #20146)

#4700 ¾ Majestic Glaze Wash (Glaze Wash, size ¾" #20102)

#L860 – 2” Langnickel Angle (Americana Décor 1” Angle Brush #28001)

### Preparation:

1. Optional: if adding drawer knobs, drill three holes along bottom board of the shelf frame.

2. Completely seal the insert with DecoArt MultiPurpose Sealer; using the glaze wash brush. Allow to dry. Lightly sand, wipe off with a lint-free cloth.

Lightly sand over any rough areas of the shelf, wipe off with a lint-free cloth. Basecoat the entire front and sides of the shelf with Vintage Chalky Paint; using the 2” angle. Apply two coats; allowing two hours drying time in between coats.

Basecoat backside of the insert with Soft Blue; using the 2” angle.

Basecoat backside of shelf with Everlasting Chalky Paint; using the 2” angle.

Apply two coats; allowing two hours drying time in between coats.

Optional – could paint another design on opposite side of insert, instead of basecoating with Soft Blue.

### Painting Instructions:

#### Sky Area

3. Using the gray graphite paper, a traced pattern and a stylus lightly transfer the horizon and horizon shrub lines to the surface.

Use the graph ruler to aid in the transfer of any straight lines, by dragging the stylus along the ruler’s edge.

Double load the 1” glaze brush with Deep Midnight Blue + Cool White, brush blend on your palette to a medium blue sky color, float a wide shade across the top of the sky area. Mop to soften.

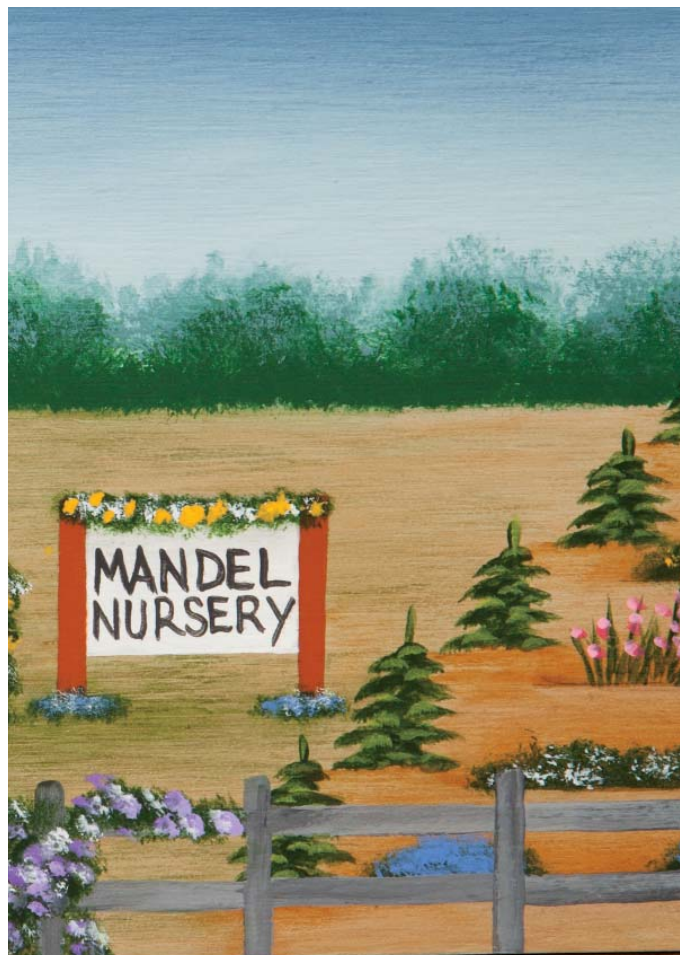
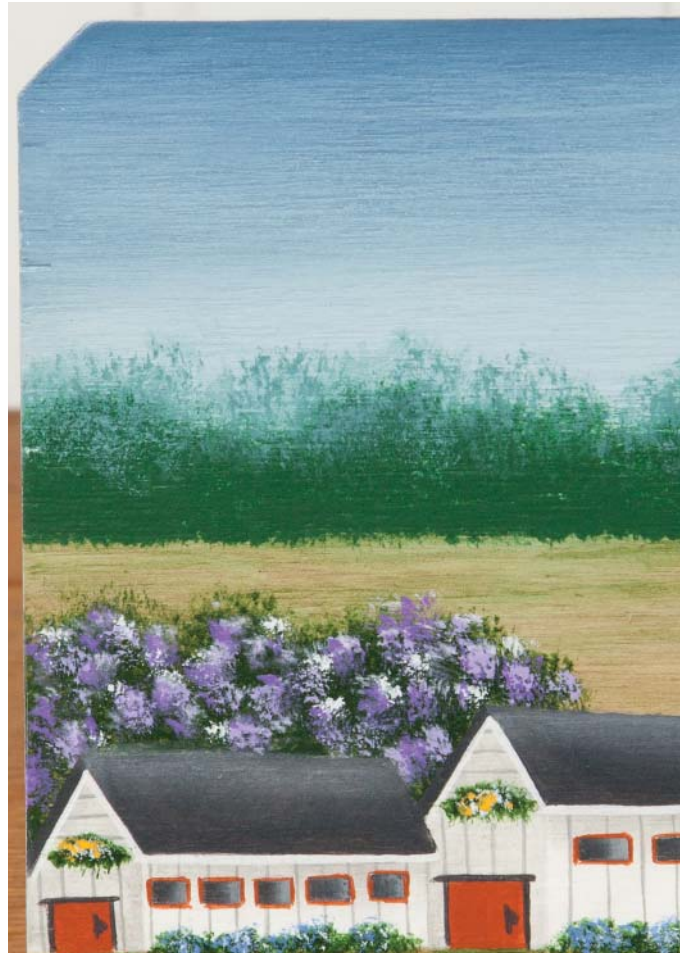
Add more Cool White as you float down to the horizon area; lightest area should be above the horizon shrubs.

#### Land Area

4. Side load the 1” glaze brush with Fawn, the other side with Milk Chocolate, brush blend on your palette, base over the land area.

When dry, transfer the crop rows to the surface; using the graph ruler to aid in the transfer of any straight lines, by dragging the stylus along the ruler’s edge.

Corner load the angle with Evergreen, randomly





chisel float\* shading over the land area on the left side.

\*chisel float by corner loading the angle, blend off on your palette, lay the bristles of the brush flat on the surface, chisel edge up. Push the paint on the bristles from left to right in a scratching motion, allowing the bristles to pull a broken line that is slightly floated.

Corner load the angle with Milk Chocolate, float shading across the backside of each crop row. When dry, transfer the structures to the surface; using the graph ruler to aid in the transfer of any straight lines, by dragging the stylus along the ruler's edge.

#### Distant Horizon Shrubs

5. With Forest Green, dance in the shrubs along the horizon; using the lge Texture brush.

With a mixture of Light Blue (Deep Midnight Blue + Forest Green + Cool White); dance across the top of the horizon shrubs for highlight and to push the shrubs into the sky area; using the lge Texture brush.

For proper use of the Texture brush, use the following method.

Dampen the bristles with water to start the separation of bristles. Tap bristles into the paint on your palette, hold it perpendicular to your palette, pounce it up and down to get some of the paint off – keeping the paint sparse on the brush. Note – this brush can be used on the whole foot or just the toe. Tap lightly on the surface, dance with the brush up and down, rolling the brush in different directions in between your fingers when it is up in the air (like dancing the twist, light on your feet). Allow some drying time in between dances so the paint sets up and you don't end up with a gloppy or muddy look.



#### Background Pines and Smaller Pines

6. With a pencil and the graph ruler, lightly transfer a line down the center of each pine.

Now slightly dampen the surface with clean water where the pine will be pulled.

The dampened surface will allow the pines to softly bleed; giving the illusion of the pines in the distance.

Use the 6 filbert for the smaller pines and the 8 filbert for the larger pines, load with Evergreen across the chisel edge.

Up on the chisel edge, vertically pull the very top

of the pine.

Horizontally tap from left to right for the boughs, slowly and slightly widening as you work towards the base of the pine.

Allow a bit of the background to show through; so the pine doesn't look like a triangle.

Load the appropriate size filbert brush with Hauser Light Green, randomly tap on the boughs for highlight.

### Background Flowering Shrubs

7. With the med Texture brush and Evergreen, dance in the flowering shrubs behind the structures.

Triple load the small Texture brush with Lavender, Purple Cow and Snow White, randomly dance flowers on the left flowering shrub.

Then triple load the small Texture brush with Peony Pink, Bubblegum Pink and Snow White, randomly dance flowers on the right flowering shrub.

### Basecoating Structures

8. Basecoat the walls of the structures with Warm White; using the appropriate size shaders. Then basecoat the roofs with Graphite.

### Detailing Structures

9. With the 5/0 liner and Slate Grey, pull the wall lines.

With the appropriate size shaders and Slate Grey, wash over the left side walls for shading. Corner load the angle with Slate Grey, float shading across the top of the right side walls.

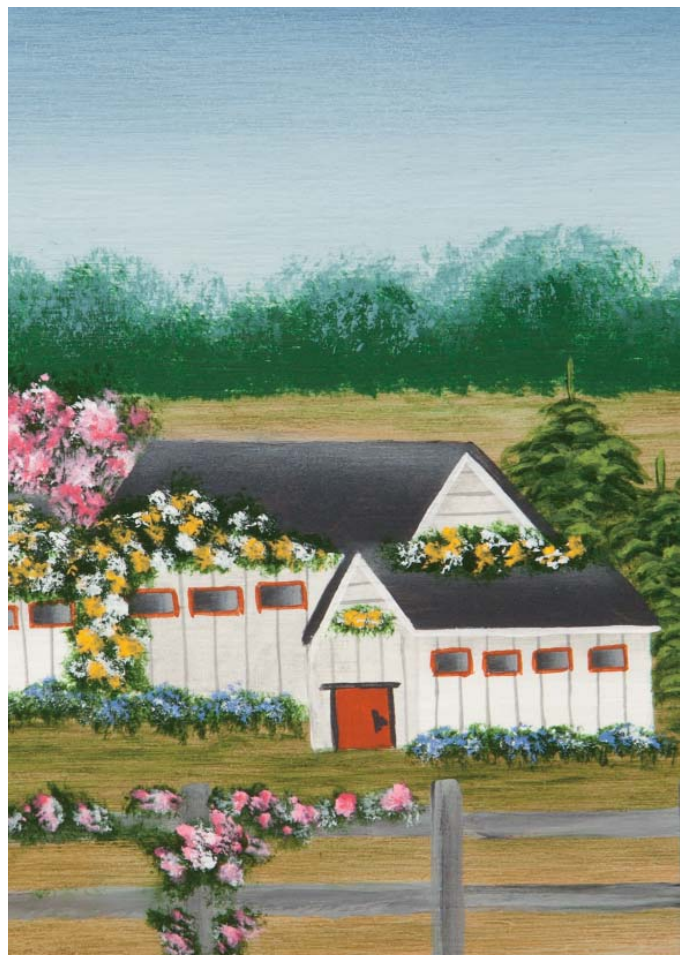
Corner load the angle with Slate Grey, float a highlight across the top of each roof. With Graphite and the 5/0 liner, pull the side roof lines. Then with Warm White and the 5/0 liner, pull the roof trim lines.

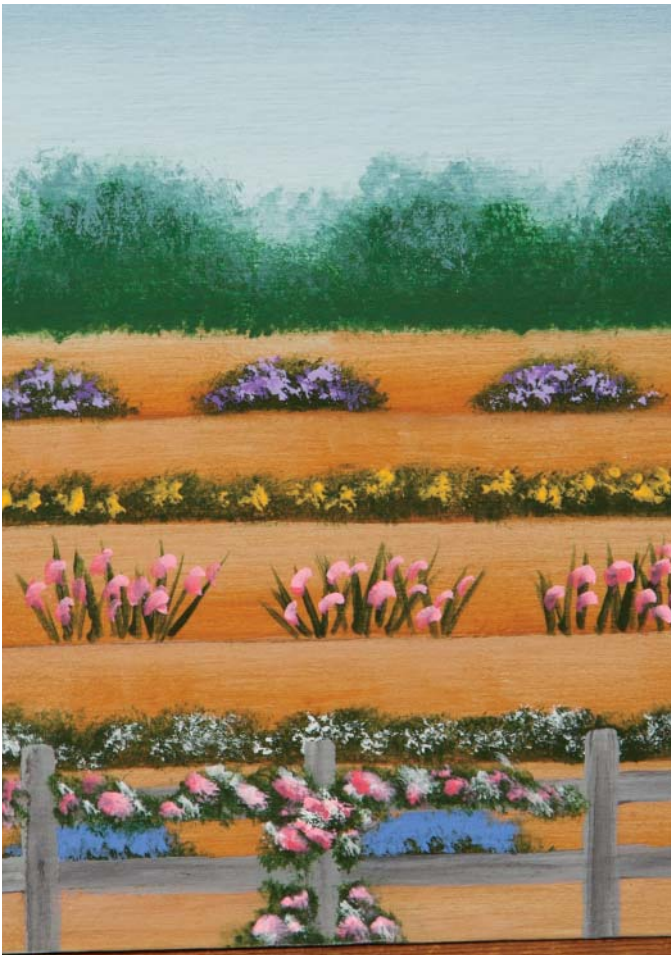
Basecoat the doors with Red Iron Oxide; using the appropriate size shaders. With the 5/0 liner and Graphite, pull trim and handles on the doors.

With the appropriate size shaders and Graphite, pull the windows. Corner load the angle with Slate Grey, float a highlight down the right side of each window. With the 5/0 liner and Red Iron Oxide, outline the windows.

### Flowering Foliage on Structures

10. With the small Texture brush and Evergreen, dance in the foliage for the flowering foliage above





the doors, on the roof and on a couple of the walls; refer to photo for placement. Then with the small Texture brush and Marigold, randomly dance in flowers in the Evergreen foliage. Repeat step with Snow White.

### Flowering Crops

11. All the flowering crops that have texture foliage is danced in by using the sm Texture brush with Evergreen.

Working the flowering crop rows from the background forward –

Back row – double load small Texture brush with Lavender and Purple Cow, dance in the Evergreen foliage

Moving forward – small Texture brush, dance Marigold in the Evergreen foliage.

Next row – with the 5/0 liner and Evergreen, pull leaves; double load the #2 filbert with Bubblegum Pink and Peony Pink, dab flowers on the leaves

Moving forward – small Texture brush, dance Snow White in the Evergreen foliage

Front row – small Texture brush, dance Blue Harbor in the Evergreen foliage

### Mandell Nursery Sign

12. Transfer the line drawing for the sign to the surface. Basecoat the sign with Warm White; using the 6 shader. Basecoat the poles with Red Iron Oxide; using the 2 shader.

Corner load the angle with Slate Grey, float a shade across the top of the sign. With the 5/0 liner and Graphite pull the lettering.

With the small Texture brush and Evergreen, dance the foliage across the top of the sign. Then with Marigold, randomly dance flowers in the foliage. Repeat step with Snow White.



### Flowering Ground Foliage

13. With the small Texture brush and Evergreen, dance in the flowering foliage along the bottom of the structures and sign. Then double load the small Texture brush with Blue Harbor and Soft Blue, randomly dance flowers in the Evergreen foliage. Corner load the angle with Evergreen, randomly chisel float\* under the ground foliage, structures and sign.

### Fence

14. Transfer the line drawing for the fence. Use the graph ruler to aid in the transfer of straight lines,

by dragging the stylus along the ruler's edge. Double load the 2 shader with Slate Grey + Graphite, pull the fence posts and supports.

With the small Texture brush and Evergreen, dance in the flowering foliage on the fence; refer to photo for placement.

For the purplish flowers – triple load the sm Texture brush with Lavender, Purple Cow and Snow White, randomly dance flowers in the Evergreen foliage. For the pinkish flowers – triple load the sm Texture brush with Peony Pink, Bubblegum Pink and Snow White, randomly dance flowers in the Evergreen foliage.

### Distressing Shelf

15. To achieve the distressing areas over the shelf, randomly rub the white candle over areas of the shelf where you want the color below to show through. Note – the backside of the shelf is not distressed. Make sure you wipe away any loose wax with a clean, dry cloth before applying the top coat. Areas coated with the wax will allow the top coat to be easily removed.

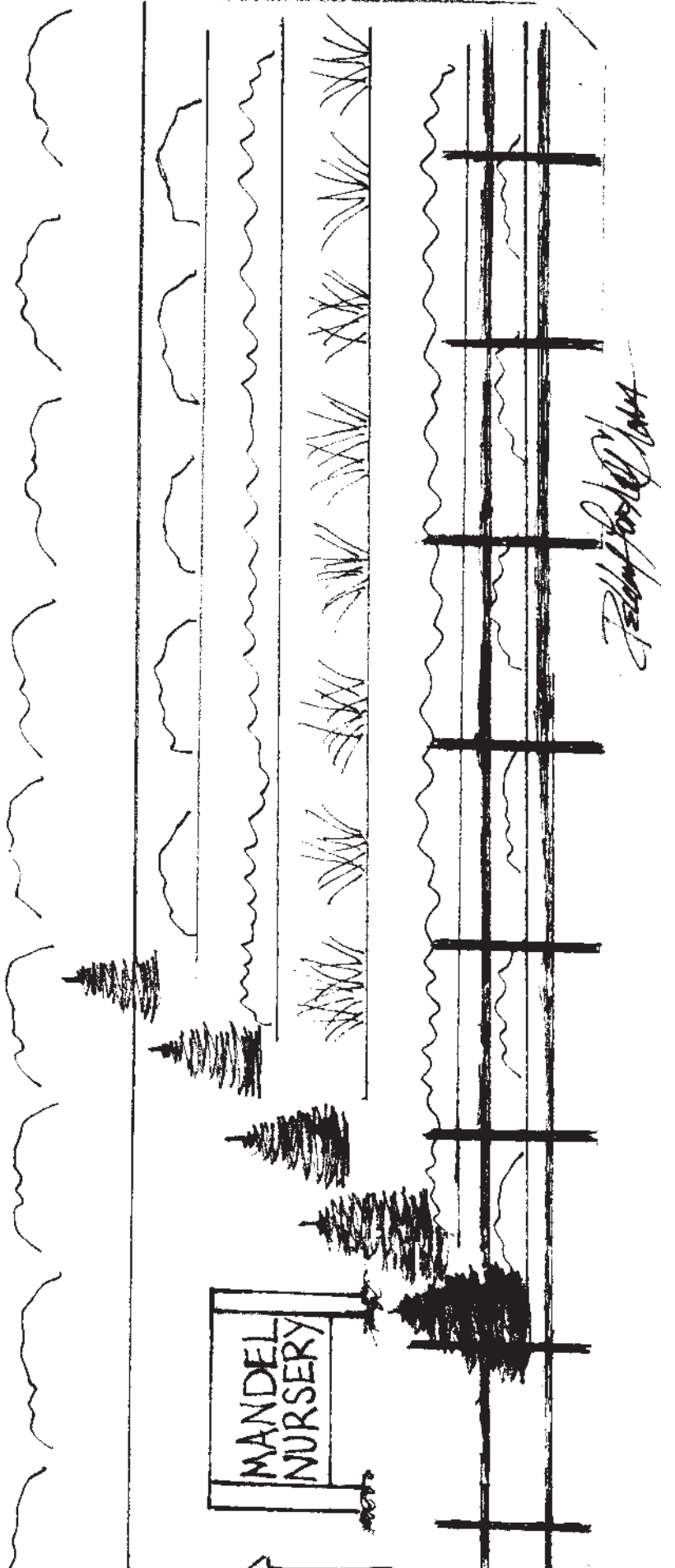
Now basecoat over the shelf with Everlasting Chalky Paint; using the 2" angle brush. Allow to dry. Sand over the shelf areas where the candle was applied, allowing the bottom color to show through. Wipe off with a lint-free cloth.

### Finishing:

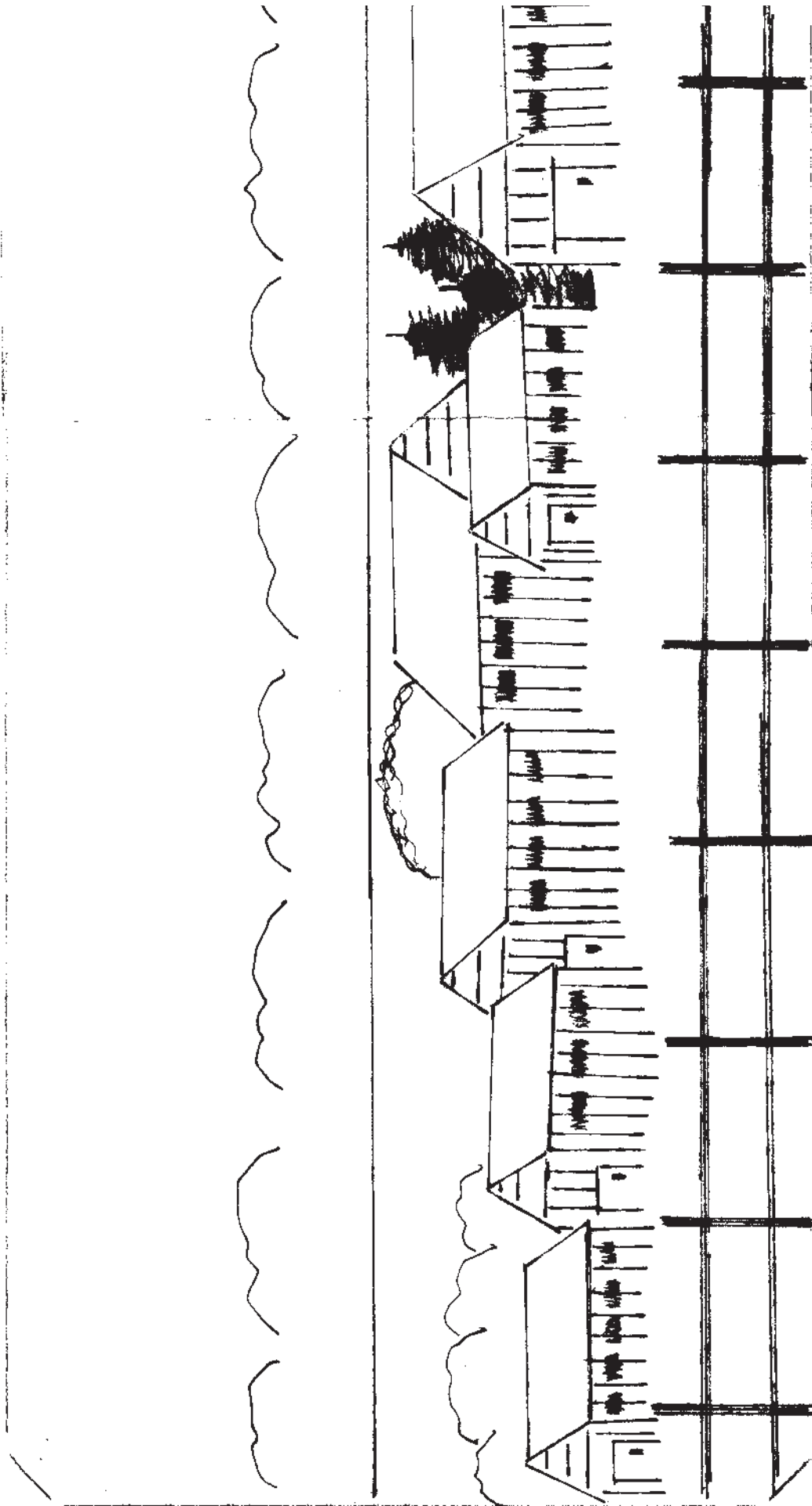
16. To protect finished painted pieces, varnish the entire shelf and insert with the Ultra Matte Varnish; using the 1" Langnickel Combo brush. Then varnish the insert with the DuraClear Matte Varnish. This brush doesn't leave any visible brushstroke marks after the varnish has dried.

17. Glue the drawer knobs into place with the Glass, Metal & More Permanent Glue.





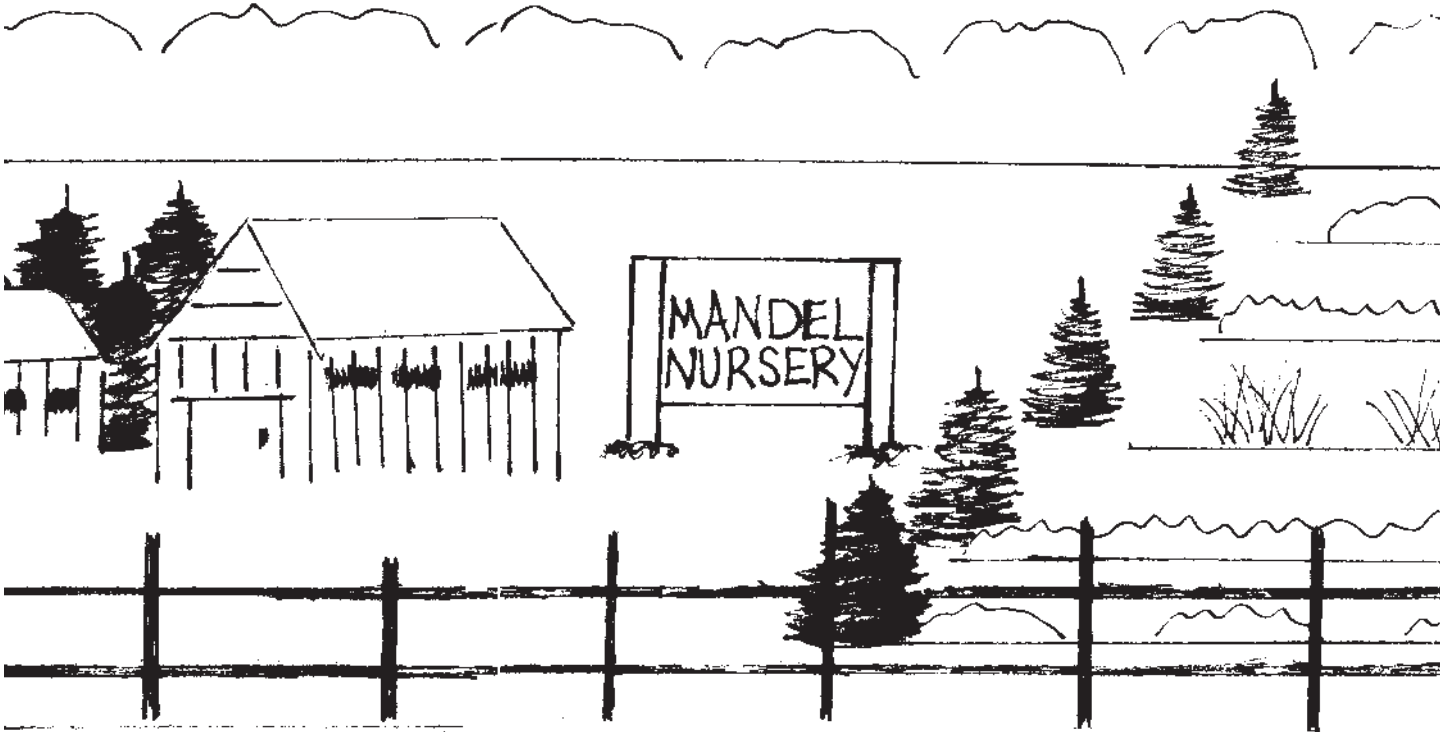




# Pattern at 100%

1" x 1"

To ensure your pattern is at 100%, this box should measure 1" x 1" when printed.







Copyright 2015 by Debby Forshey-Choma and Crafts Americana Group, Inc.  
All Rights Reserved. #331898

No. 

© Artist's Club ®. All rights reserved. For private, non-commercial use only. Please see our web site for terms of use.