

# *A Time for Spring*

by Barb Halvorson

*The* Artist's Club



Barb Halvorson

# A Time for Spring

By Barb Halvorson

---

Spring is a very special time in Minnesota; especially after the cold hard winters we have. I can almost hear the snow melting; maybe it's because I want spring to come so badly.

## Palette:

### DecoArt Americana Acrylics

Alizarin Crimson #13179  
Bright Orange #13228  
Cadmium Red #13015  
Foliage Green #13259  
Heritage Brick #13219  
Leaf Green #13051  
Purple Cow #13262  
Slate Grey #13068  
Ultramarine Blue #13225  
Yellow Ochre #13008

Black Forest Green #13083  
Bright Yellow #13227  
Citron Green #13235  
French Grey Blue #13098  
Lamp Black #13067  
Peaches and Cream #13023  
Traditional Burnt Umber #13221  
Turquoise Blue #13258  
Warm White #13239

## Surface:

Sweetener Box #62415

## Misc. Supplies:

DecoArt Drying Time Extender #83131  
Tack Cloth #70104  
DecoArt MultiPurpose Sealer #87392  
Gray Graphite Paper #70141

DecoArt Acrylic Gesso #87399  
Small Sanding Pad, Fine/Medium #70794  
DecoArt DuraClear Varnish – Satin #87394  
Sponge Brush, 1" – set of 4 #70172

## Brushes:

### Papillon by the Artist's Club

Shader, size 2 #20125; size 6 #20127; size 12 #20131; size 16 #20133  
Liner, size 10/0 #20145; size 0 #20146  
Round, size 10/0 #20155; size 1 #20157  
Comb, size ½" #20153; size 1/8" #20151  
Stipple Set #20172 (or your favorite foliage brush)

## Preparation:

Sand wood piece with a sanding pad. Wipe off with a tack cloth. Seal with DecoArt MultiPurpose Sealer. Sand again when dry and wipe away dust. Apply two coats of Acrylic Gesso. Sand, dry, between each coat. Basecoat the sides of the box & under the lid of the box with Slate Grey. Basecoat the inside of the box & bottom of the box with Black Forest Green. Transfer the main pattern lines to the front of the box with Gray Graphite Paper.

## Painting Instructions:

Refer to the color photos and step by step worksheets often while painting.

Glazing: I have used a glazing technique in painting this project. Glazing is a wonderful technique which is used to strengthen highlights or shadows and can also be used to add tints of color. I first

lay a thin even coat of DecoArt Drying Time Extender on the area to be glazed, and let it dry. You will then apply thinned color to the area as described in the instructions below. You can add as many coats of color as you choose but make sure each coat dries completely before adding the next.

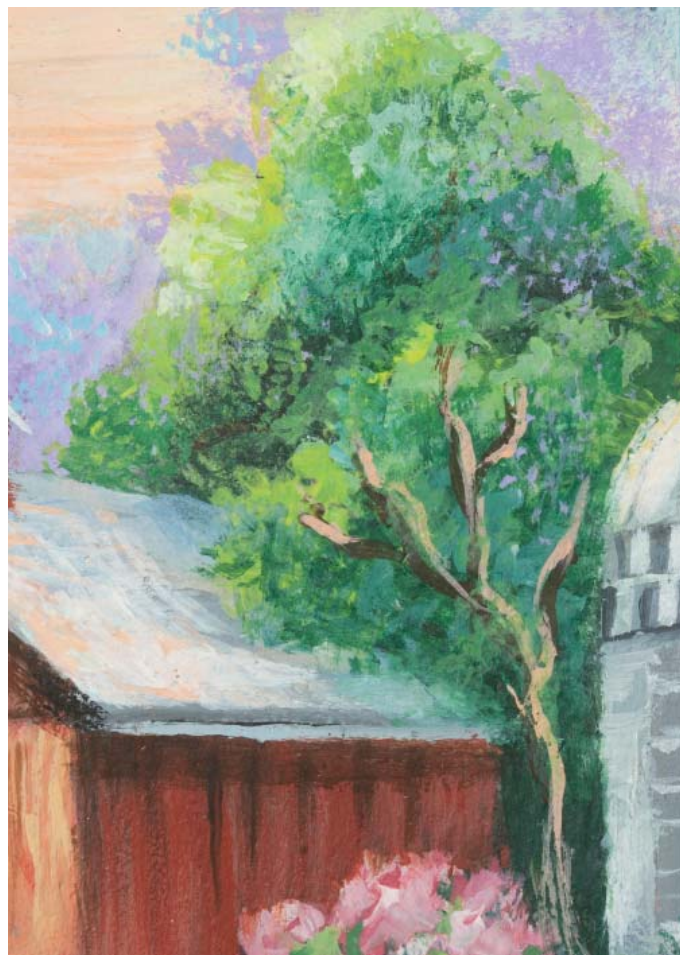
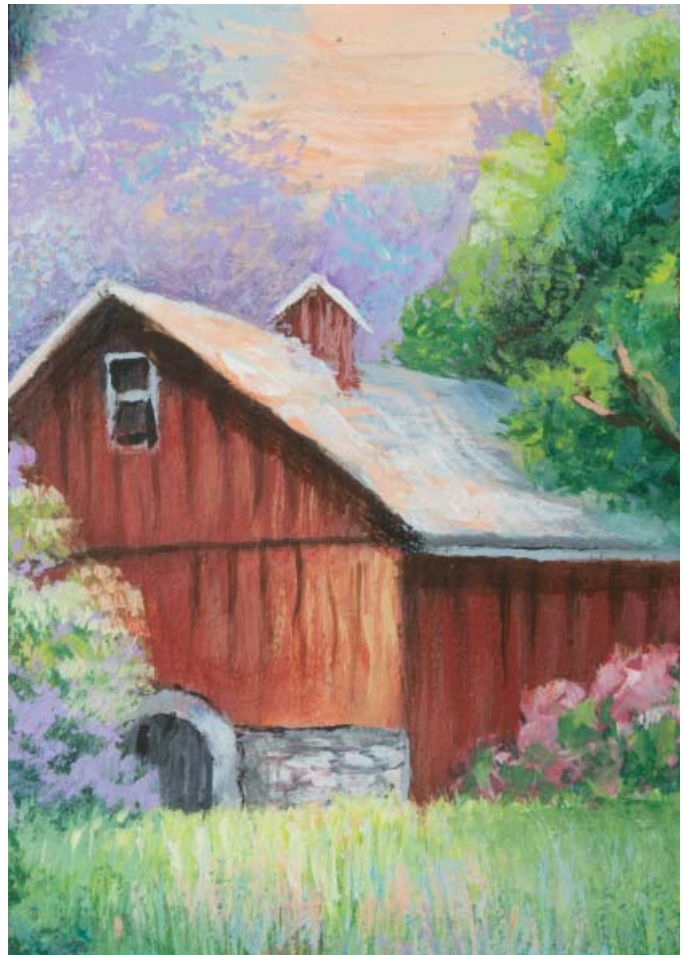
**Sky:** Using the size 16 Shader brush, basecoat the sky area with Warm White painting horizontally. Paint out the tops of the trees. As you reach toward the top of the sky add Turquoise Blue to your brush. Let this dry and glaze Peaches and Cream to the white area. Adjust this color to your liking. If this is still too white add an additional glaze of Peaches and Cream.

**Purple Foliage Behind the Barn:** Load a small Stipple brush with a good amount of Purple Cow; tap the brush on the palette paper to make sure the paint is evenly distributed on the bristles. Starting behind the barn use a tapping motion and make sure the foliage isn't in a straight row. This is shown on the worksheet. Without cleaning the brush add a touch of the Turquoise Blue + Warm White here and there on top of the purple foliage.

**Green Foliage and Grass:** Notice the samples of greens on the right side of the worksheet. Colors are, starting from top to bottom: Black Forest Green, Leaf Green, Foliage Green, Citron Green, Black Forest + Ultramarine Blue, Leaf Green + Turquoise Blue. Greens are sometimes hard to mix and I usually brush mix. Look at the top three samples on the worksheet. I added a touch of Warm White to each of these to show the different varieties of colors you can achieve. When the green looks too bright or too artificial, tone it down with a touch of Alizarin Crimson.

**Trees Behind the Barn:** With a small Stipple brush, pat the darkest green trees behind both sides of the barn using Black Forest Green with a touch of Ultramarine Blue + a touch of Alizarin Crimson. The middle color was Leaf Green and the next Foliage Green. Work into groupings or clusters. I highlighted with Citron Green and added some tree trunks intertwined between the trees with Traditional Burnt Umber thinned to writing consistency. Then add a bit of Warm White on the left side. Don't forget to add tree foliage on the right side of the barn.

**Roof:** Pick up Slate Grey with a size 6 Shader and base in the back of the roof; then add Warm White and continue basecoating toward the front. Watch the slanted roof direction as you paint. Glaze Peach-





es and Cream on the White side of the roof. Put an eave on the right side of the roof with Slate Grey thinned down to writing consistency. If this is not dark enough add a touch of Lamp Black to the Slate Grey.

Silo: Basecoat the silo with French Grey Blue. Paint the details using Warm White + Slate Grey using the size 10/0 Liner brush. Refer to the photo to add the details. We want to keep this silo old, and in the background, so there is very little precise detail.

Barn: Using a size 6 Shader for the larger areas and a size 2 Shader for smaller areas, base the walls and cupola with Heritage Brick using vertical strokes. Next, let this dry and wash a coat of Cadmium Red over both walls. Keep the strokes in a downward fashion. Do the cupola at the same time. Let the sides of the barn dry; then apply a coat of DecoArt Drying Time Extender and shade with a wash of Traditional Burnt Umber. You may have to repeat this step twice. Shade the entire cupola at the same time with Traditional Burnt Umber. This will remain in the shadows. You may have to repeat this step twice as well. Basecoat the window and inside the door with Lamp Black + just a touch of Slate Grey.

This should be just enough that it isn't totally black. Paint the rock foundation and door frame with French Grey Blue. Line both of these with a darker shade by adding Lamp Black to the French Grey Blue. This is shown on the barn on top of the worksheet. There is a slight highlight in the middle of the door frame with Warm White. With the chisel edge of the size 2 Shader brush add small rocks with Slate Grey while the paint is still wet. Using the 10/0 Liner add vertical board lines with Traditional Burnt Umber. Add a touch of Lamp Black with to the Traditional Burnt Umber on the right side only. This should be in the shadows. Add the detail trim on the window, the door, and line the cupola with Slate Grey.

Bushes in front of the barn: Paint the bushes with a small Stipple brush. Use a tapping motion. First, I added Alizarin Crimson then I highlighted with Warm White. After this dried, I added some green bushes over the pink flowers with Leaf Green and also added some in front of the silo.

Bushes to the left of the barn: Paint the bushes in the same way as you did the bushes to the right of the barn. Add the purple bushes with Purple Cow and work into groupings or clusters. Make sure the clusters do not look like nice little circles or that



you can count each individual grouping.

**Grass:** Notice we will use the same colors for the grass as we did for the bushes. Black Forest Green, Leaf Green, Foliage Green, Citron Green, Black Forest + Ultramarine Blue, Leaf Green + Turquoise Blue. Refer to the photo and worksheet for color placement. This time you will use the ½” Comb and load a good amount of thinned paint (evenly distributed) on the bottom of the brush. Turn it over so that the paint is on top of the brush. Use a very short pressure stroke and start planting grass. The grass is short at the very front of the barn and longer as you come toward the water. Start with short downward strokes; then gradually become longer as the strokes come toward the water. The brightest spot is Citron + Warm White underneath the barn. It doesn't hurt to have a little Turquoise Blue or bluish colors in the grass. Remember light stroke and strokes should be connected.

**Blue Bushes:** Take a small Stipple brush and basecoat blue bushes; while the bushes are still wet, tap Turquoise blue + Warm White. Add some green short foliage in front of the bushes, same method of painting.

**Water:** Normally water reflects everything above it. Using the size 12 Shader brush; start with the blues, add violets, greens, and pinks in the palette, using vertical strokes. Next, take a clean size 12 Shader brush and softly skim horizontally over the water. Wash the brush out, add Warm White for waterlines and ripples. The waterlines should be shorter toward the bank and a bit larger in the middle.

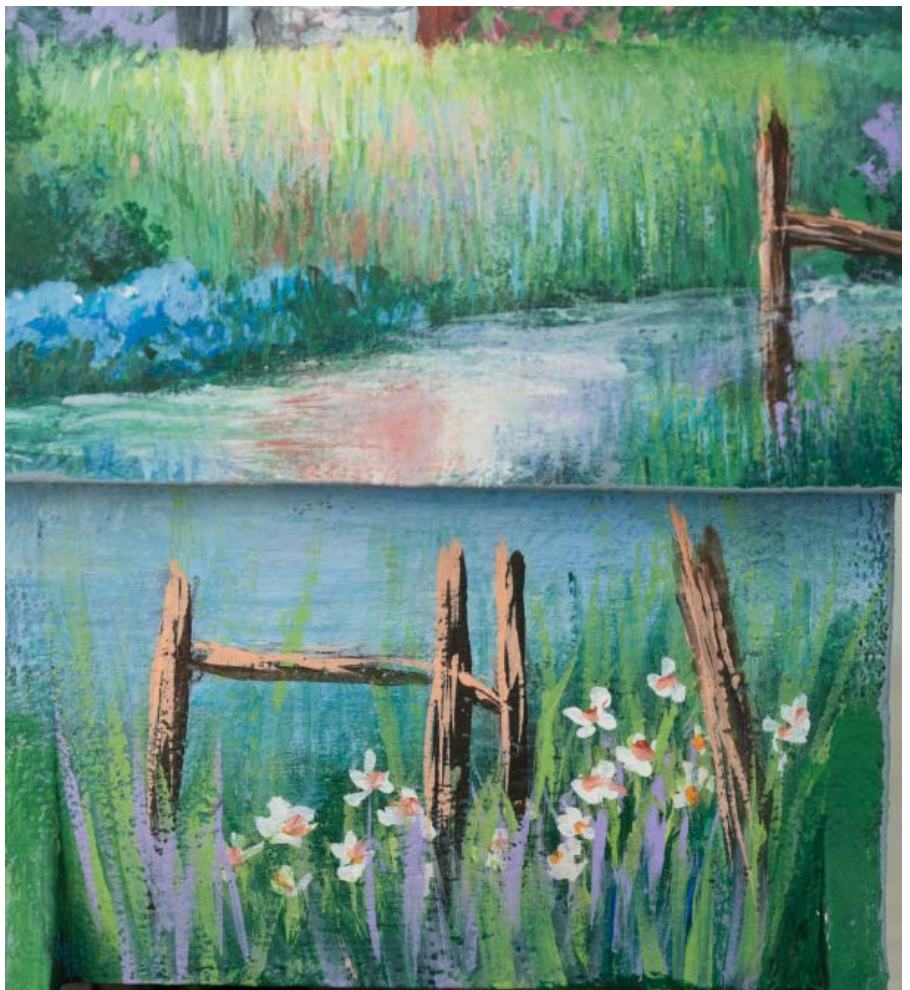
**Longer Grass in front of the Water:** Paint this grass the same way you did before only longer. It is a little brighter toward the front of the bank (where the fence posts are planted) and longer at the bottom of the surface.

**Fence Posts:** Using the chisel edge of a size 4 Shader brush, pick up Traditional Burnt Umber and plant your fence posts vertically into the ground. Highlight on the left side with Peaches and Cream. Pull up more individual weeds with greens, violets.

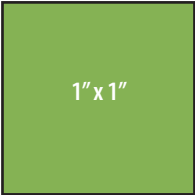
**Daisies and longer individual grass:** Pick up Warm White and with a size 1 Round make 3 to 5 small oblong strokes and place the centers in with Bright Orange or Yellow. Use the size 0 Liner; thinned to writing consistency (this time use water) and pull up greens and violet tall grasses. Have some green stems connected to your daisies.

### **Finishing:**

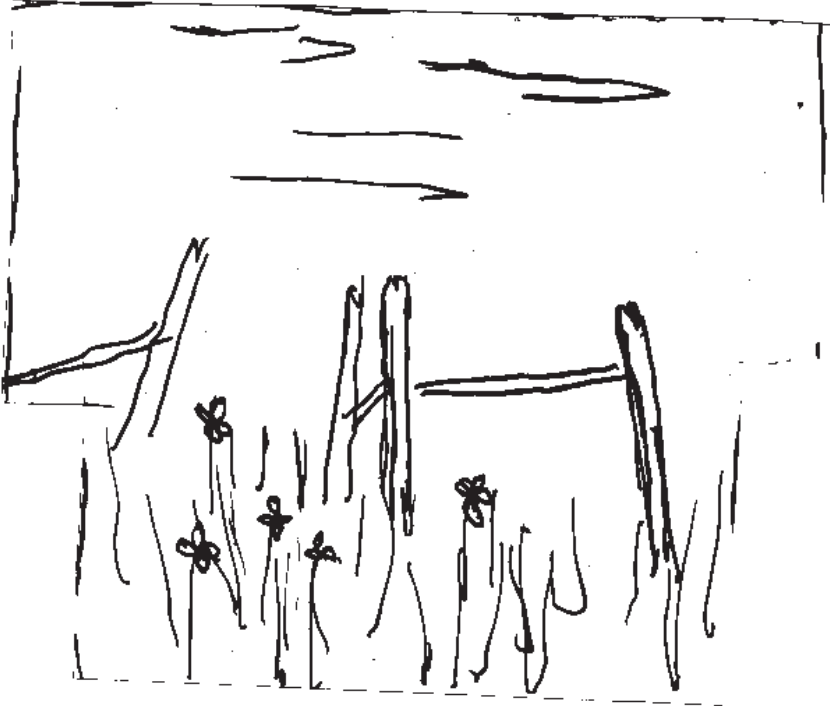
Touch up the sides and bottom of the box as necessary with the original basecoat colors. Finish with DecoArt DuraClear Varnish – Satin. Although this piece is a sweetener box, I wanted to use it for something a little more practical. It is now my paper clip & rubber band holder on my desk.



# Pattern at 100%



To ensure your pattern is at 100%, this box should measure 1" x 1" when printed.



Add touches of sky color into the purple foliage.

Black Forest Green

Foliage Green

Leaf Green

Citron Green

Ultramarine Blue  
+ Black Forest Green

Leaf Green  
+ Turquoise

Work foliage into groupings or clusters.

Rake several variations of green using the rake brush

Fencepost: Highlight on the left side with Peaches and Cream



Copyright 2015 by Barb Halvorson and Crafts Americana Group, Inc.  
All Rights Reserved. #331897

No.



© Artist's Club ®. All rights reserved. For private, non-commercial use only. Please see our web site for terms of use.