

Off to Market

by Sharon Bond



the Artist's Club

Off to Market

By Sharon Bond

Palette:

DecoArt Americana Acrylics

Banana Cream # 13545
Burnt Orange # 13016
Butterscotch # 13518
Canyon Orange # 13238
Espresso # 13261
Hauser Medium Green # 13132
Irish Moss # 13548
Light Avocado # 13106
Rookwood Red # 13097
Tomato Red # 13169
Traditional Raw Sienna # 13222

Boysenberry Pink #13029
Buttermilk # 13003
Camel # 13191
Celery Green # 13208
Hauser Dark Green # 13133
Honey Brown # 13163
Lamp Black # 13067
Marigold # 13194
Soft Black # 13155
Traditional Burnt Umber # 13221
Wasabi Green # 13519

Surface:

Canvas Market Bag # 40143

Misc.Supplies:

DecoArt Easy Float # 87396
Identi-Pen Black - # 70830

DecoArt Fabric Painting Medium # 70084
Iron

Brushes:

Papillon by the Artist's Club
Glaze/Wash Brush $\frac{3}{4}$ # 20102
Round 2, # 20158
Script Liner 10/0, # 20137
Shader 6, # 20127
Angular Shader $\frac{1}{4}$, # 20109
Angle Shader $\frac{3}{8}$ # 20110
Highlighter Set (4 piece) - # 20173 (The 2 smallest sizes)

Preparation:

I laid out the canvas bag flat and ironed over it just to smooth out any wrinkles. I then applied a coat of the DecoArt Fabric Painting Medium. (You only need to apply this to the center section of the bag, where you will be painting. No need to do the entire bag.) Let this dry several hours or overnight. Now we can transfer the main part of the design.

Painting Instructions:

In painting this piece, I did it in sections. For ex-



ample, I wanted to complete the sunflower before I started on the rooster. I basically worked from back to front! (Paint, let it dry, transfer the next part, etc...) Also most all of the outlining is done with my pen (or marker), makes the details much easier!

SUNFLOWER – Basecoat all petals in Marigold. Remember to let any area dry before moving on to the next color. Shade the bottom edge of each petal Canyon Orange. Shade the top of each petal with Banana Cream. Once dry, I did go back and drybrush a bit of Marigold in the center to help all three colors blend. Basecoat the entire center with Soft Black. I then stippled a bit of Espresso in the center. I stippled back over this area with Soft Black. I didn't want the center to look "solid". I then took Traditional Raw Sienna and stippled around the inside edge. I finely outlined all petals with Lamp Black and added more of a thick Black outline around the center.

ROOSTER – Basecoat the Rooster's body and head with Honey Brown. Drybrush these areas with Camel. The neck, beak, and outside section of the wing are all basecoated with Butterscotch. Drybrush the neck and wing area with a bit of Banana Cream. Shade the left side of the inside edge of the neck and the top of the beak with a bit of Canyon Orange. The eye is Butterscotch with a Black pupil. The cheek is shaded with Tomato Red. The eye is outlined finely in Lamp Black. The comb and the waddle (and inside section of the wing) are based in Rookwood Red. Drybrush these areas fairly heavy with Tomato Red. I added Honey Brown stripes across the red wing area. The largest tail feather is done in Honey Brown. The tall feather is done in Butterscotch and the two smaller feathers are done with Tomato Red. I shaded around the inside edges of the Rooster with Traditional Burnt Umber. Remember to shade under the wing and neck as well. I also shaded behind the head with this as well. Once everything is dry, I finished my outlining. I used the pen for all the details. I lined stripes through all the tail feathers. I lined zig-zag stripes through the outside wing section and the neck area. I outlined the Honey Brown stripes on the red section of the wing. I also added swirls to the comb and waddle. The rest of the Rooster is also outlined in Black.

LARGE LEAVES (that go with the Sunflower) –





Basecoat each leaf with Light Avocado. Drybrush over each leaf with Camel and a bit of Light Avocado mixed in. Shade the bottom edges with Hauser Dark Green and shade the top edge of each leaf with Marigold. Outline the leaves and veins in the leaves with your Black pen.

WATERMELON – Basecoat the flesh of the watermelon with Rookwood Red. Drybrush fairly heavy with Tomato Red. Drybrush Boysenberry Pink around the edge of the flesh where it meets the rind. The rind is based in Medium Hauser Green and drybrushed in Irish Moss. Outline the watermelon in Black. I drew a zig-zag pattern across the rind. The seeds are painted Black with fine lines of thinned Buttermilk through each seed.

CORN – Basecoat the corn with Marigold. Drybrush with a bit of Banana Cream. Shade one side with Canyon Orange. Leaves are based with Medium Hauser Green. Drybrush with a bit of Marigold. Outline corn and leaves finely with Black.

LETTUCE (Cabbage) – Basecoat outer leaves with Celery Green. I also randomly picked a few inside leaves in the top to basecoat with Celery Green as well. (Refer to the photo, although you can do this randomly). The tops of the leaves, including some in the center are based with Wasabi Green. Shade under the tops and around the bottom and side edges with very thin Hauser Dark Green. (If you get this too wet, simply dab back with a piece of soft cloth.) Outline around all the leaves finely in Black.



APPLE – Basecoat the apple with Rookwood Red. Drybrush fairly heavy with Tomato Red. Dab a bit more of the Tomato Red in the upper right hand corner. I also added a “reflective” mark with thinned Boysenberry Pink. I shaded the left side with Traditional Burnt Umber. The stem is also Traditional Burnt Umber. The leaf is based in Hauser Dark Green. Left side of the leaf is shaded with Hauser Medium Green. The entire apple is outlined finely in Black.

PUMPKIN – Basecoat the pumpkin in Burnt Orange. Drybrush Canyon Orange over each “rib” section. Add a bit of Marigold to your brush and go back over these same areas, but mainly just at the top. Stem is basecoated in Espresso. With thinned Tra-

ditional Burnt Umber, shade between each rib and shade the stem. Outline the entire pumpkin and stem with Black, including the curly vines and the stripes on the stem.

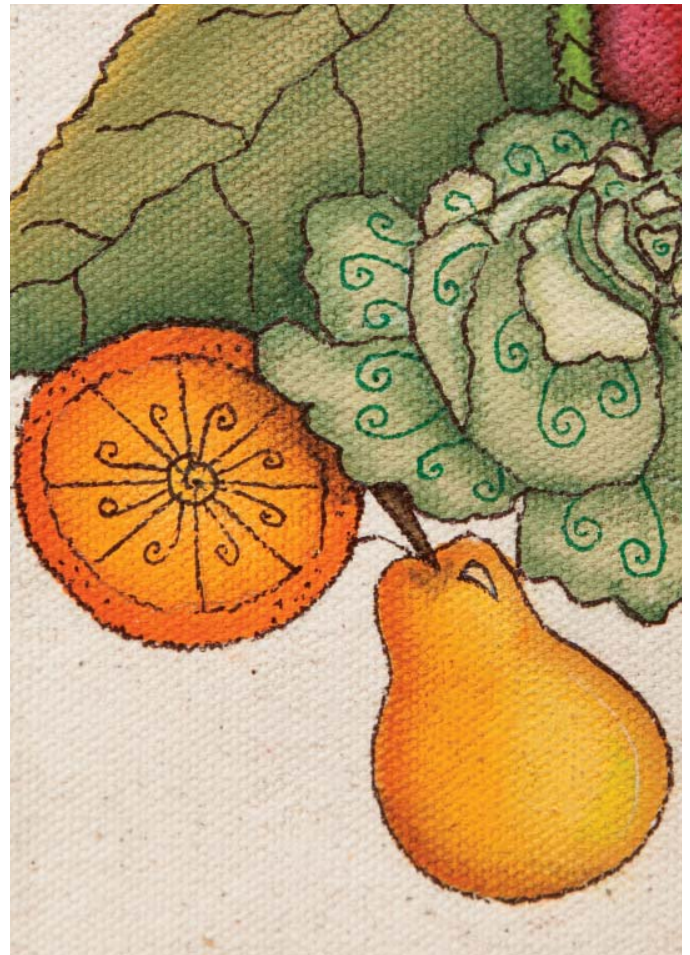
ORANGE SLICE – Basecoat the orange in Canyon Orange. Drybrush from the center outwards with Marigold, with Marigold more concentrated in the center. Shade around the outside edge with Burnt Orange. Finely outline the orange, all sections and swirls finely in Black. I also shaded a bit of Traditional Burnt Umber where the lettuce leaf overlaps part of the orange.

PEAR – Basecoat the pear with an equal mix of Traditional Raw Sienna and Marigold. Once dry, drybrush heavily with Marigold. Drybrush highlights on the right side with Banana Cream. Shade the left side with thinned Burnt Orange. I also shaded just a touch of Irish Moss on the bottom right hand side. Stem is Traditional Burnt Umber. I painted the small 'reflective' patch with thinned Buttermilk. Outline the stem and entire pear finely with Black.

GARLIC (Onion) – Basecoat in Buttermilk. Shade between each section with Honey Brown. I also shaded a bit of Honey Brown on the bottom, where the roots will be. Outline the rest finely in Black. Including the swirls on top and the lines for root on the bottom.

TOMATO - Basecoat the tomato in Rookwood Red. Drybrush heavily with Tomato Red. Add a bit of Canyon Orange to your brush and drybrush just a bit around the top. Leaves are based in Hauser Dark Green with a stripe of Hauser Medium Green through each leaf. Outline the entire tomato and all leaves finely with Black.

CHERRIES – Basecoat the cherries with Tomato Red. Drybrush the cherries with Boysenberry Pink. Now go back over the cherries with Tomato Red. The small 'reflective' patch on the bottom cherry is painted with Boysenberry Pink. I shaded a bit of Traditional Burnt Umber behind the bottom cherry (where it meets against the other cherry). Outline cherries and stems finely with Black. Leaf is based in Light Avocado and the top section of the leaf is shaded with Irish Moss. Outline the leaf with Black as well.





ACORN – Basecoat the top of the nut with Honey Brown. Basecoat the bottom section with Traditional Burnt Umber. Drybrush the top part with a bit of Camel. Drybrush the bottom section with a bit of Espresso. The stem is Traditional Burnt Umber. Outline the entire nut finely in Black including the criss-cross stripes on the top section.

CARROTS – Basecoat the carrots with Burnt Orange. Drybrush with Canyon Orange. Drybrush just a bit of Marigold towards the tops of the carrots. Shade Traditional Burnt Umber down the left side edge of the left carrot. Also shade a bit of Traditional Burnt Umber on the bottom carrot where the top carrot goes across. With some thinned Medium Hauser Green, I stroked some lines coming out of the top of the carrots. I then finely outlined the carrots in Black. Including a few fine strokes across the carrots and the swirl tops that go over the green section.

PEAS – Basecoat pea pods in Celery Green. Shade the bottom edge with thinned Hauser Dark Green. Shade the top edge of each pod with Wasabi Green. The peas are solid Irish Moss. The tops of the pods are Hauser Dark Green. Outline the peas, pea pods, tops and vines finely with Black.



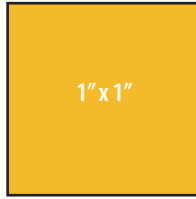
STRAWBERRY – Basecoat berry in Rookwood Red. Drybrush heavily with Tomato Red. Add just a touch of Marigold to your brush and highlight around the top of the berry. The leaves are based in Medium Hauser Green and striped with Irish Moss. Outline the entire berry and leaves finely with Black. I also used my pen to add little “teardrop” shapes for seeds. I used my stylus to dot each seed with Camel. Once dry, I washed Tomato Red back over the berry.

LETTERING (Optional, on the back of the bag) – If you decide to add this to the back of the bag, it is all done in Lamp Black. Finer lines are done with my Identi-Pen.

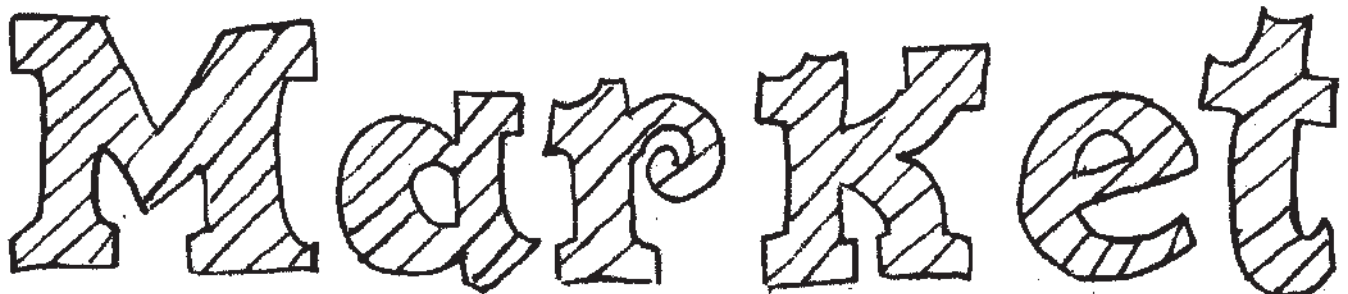
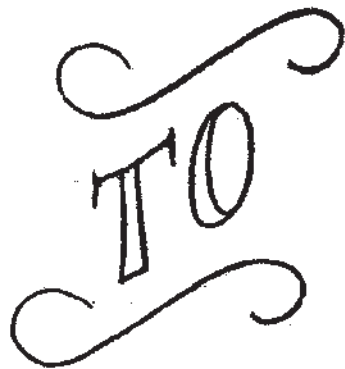
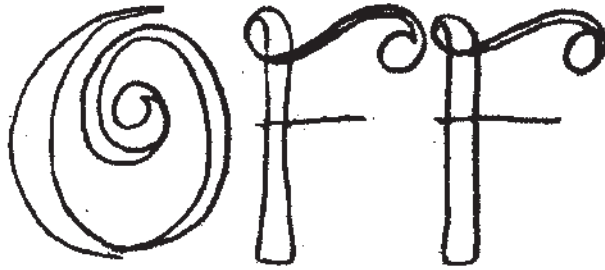
Finishing:

There is really nothing left to do, the paints and markers are permanent – however to help seal the design for greater protection, you can heat set it by ironing it. Now you are ready to head off to the Market!!

Pattern at 100%



To ensure your pattern is at 100%, this box should measure 1" x 1" when printed.









Off

To

Market



Copyright 2015 by Sharon Bond and Crafts Americana Group, Inc.
All Rights Reserved. #331893

No.



© Artist's Club ®. All rights reserved. For private, non-commercial use only. Please see our web site for terms of use.