

Heart at HOME

by Deb Antonick



the Artist's Club

Heart at HOME

By Deb Antonick

Palette:

DecoArt Americana SoSoft Acrylics

Antique Gold #14400	Avocado #14401
Baby Blue Deep #14402	Baby Pink Deep #14403
Brown #14408	Burnt Sienna #14409
Buttermilk #14410	Cadmium Yellow #14412
Crimson #14416	Dioxazine Purple #14420
Green Apple #14423	Hauser Dark Green #14425
Indian Turquoise #14427	Ivory #14429
Lamp Black #14430	Lavender #14431
Natural Buff #14465	Red Pepper #14445
True Blue #14451	White #14455
Wisteria #14457	

Surface:

#40141 Canvas Pillow 12" x 12"

Misc. Supplies:

Transparent Medium #70867 (2 x 2oz bottles required)
Stylus #70125
Palette Paper #70560
Gray Graphite Paper #70141
Identi Pen Black #70830

Brushes:

Papillon by the Artist's Club

4 Piece Highlighter set #20173
Liner, size 2 #20148
Angular Shader, size ½" #20111; size ¼" #20109
Shader, size 4 #20126; size 6 #20127; size 8 #20129

Deb's Techniques:

Drybrush method: I drybrush all of my highlights unless otherwise mentioned using the various #20173 highlighter brushes.

The brush must be dry. When drybrushing, I load my paint from a dry surface, not a wet palette as the moisture will get into the brush and make the paint go on smudgy. I also keep an old towel handy; it is great for cleaning the brush between colors.

To start, load the brush by tipping it into the first color, wipe most of the paint off on a paper towel. Lightly brush the surface in a circular or side to side motion. The harder you press, the more color you will get. Start light to see how heavy you need to go. The first drybrush coat should allow some of the background to still show through.

Clean the brush as best you can on your old towel, then pick up the next color as required. Apply in the same manner using less.

Float / Shade: Float color with the angle shader. For painting on Fabric I do not use water. Use the Transparent medium for all floating, shading, highlighting and blending. Dress the brush in clean

Transparent medium then load and blend the color as you normally would when shading.

Line: Unless otherwise stated, all lining is done with identi-pen.

Basecoat: Use the brush that best fits the area size.

The Painting Process:

Basecoat - Starting with the first color, take a clean ½” angle shader brush and dip it into the Transparent Medium then coat the starting area. This is clear so it is ok to go over the edges.

Work on small areas at a time, i.e.: complete the head, and then move to the ears.

With the brush still wet with the medium, pick up a little bit of the basecoat color. Try not to cover any other elements that will be a different color. I also try not to cover up the inked lines, although you can go back when the project is completed and dry and touch up the lines if needed.

The basecoat does not need to be perfect. It is ok for the background to show through, I think it adds to the finished look.

Shade - Once you have basecoated the starting area, corner load the same brush with the shading color. Pat the shading in softly to blend.

Clean the brush with water and dry well with paper towel.

Highlight - Dress the brush with Transparent Medium, corner load into the highlight color, pat to blend.

Repeat this process for each individual element of the project.

Preparation:

The pillow that I used is all ready for painting. If you are unsure of your surface, it is recommended that you wash and dry the fabric before use. Do not use any fabric softeners in the wash or the dryer as this will create coating on the fabric. Iron the fabric flat.

Trace the design onto the fabric with graphite paper; be sure to trace all the design elements.

Ink the design using a permanent marker. I recommend the Identi-pen, or a Fine Point Sharpie can also be used.

You are now ready to paint.

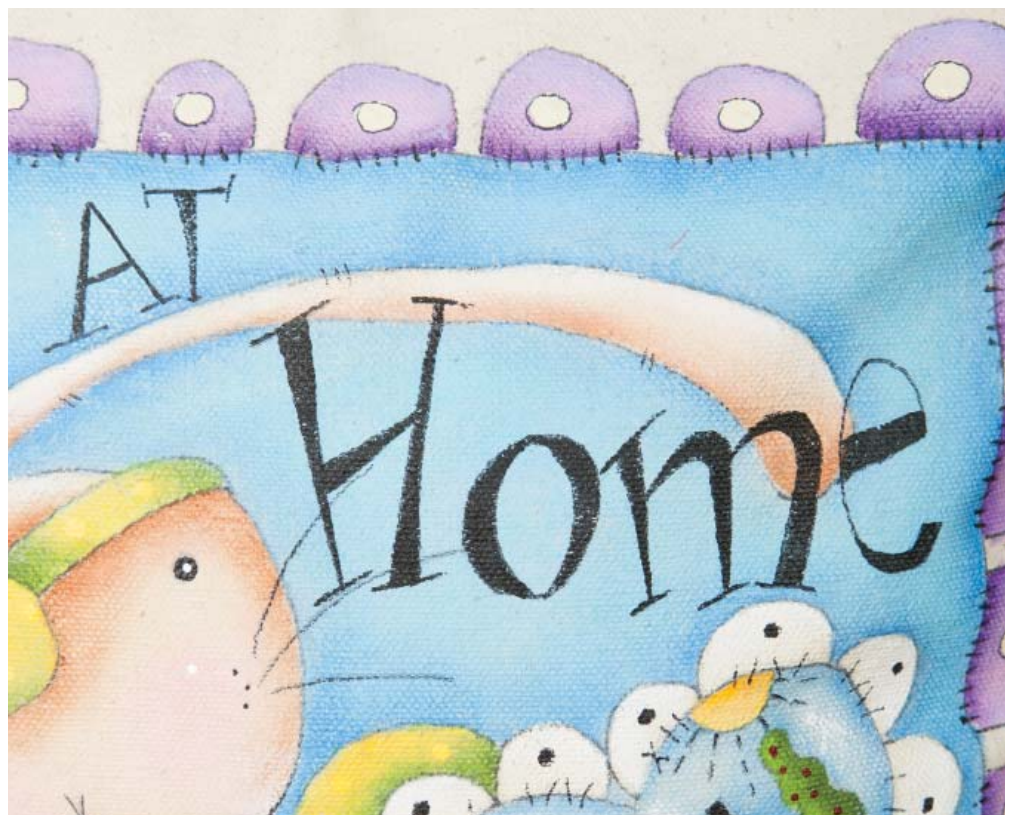
Painting Instructions:

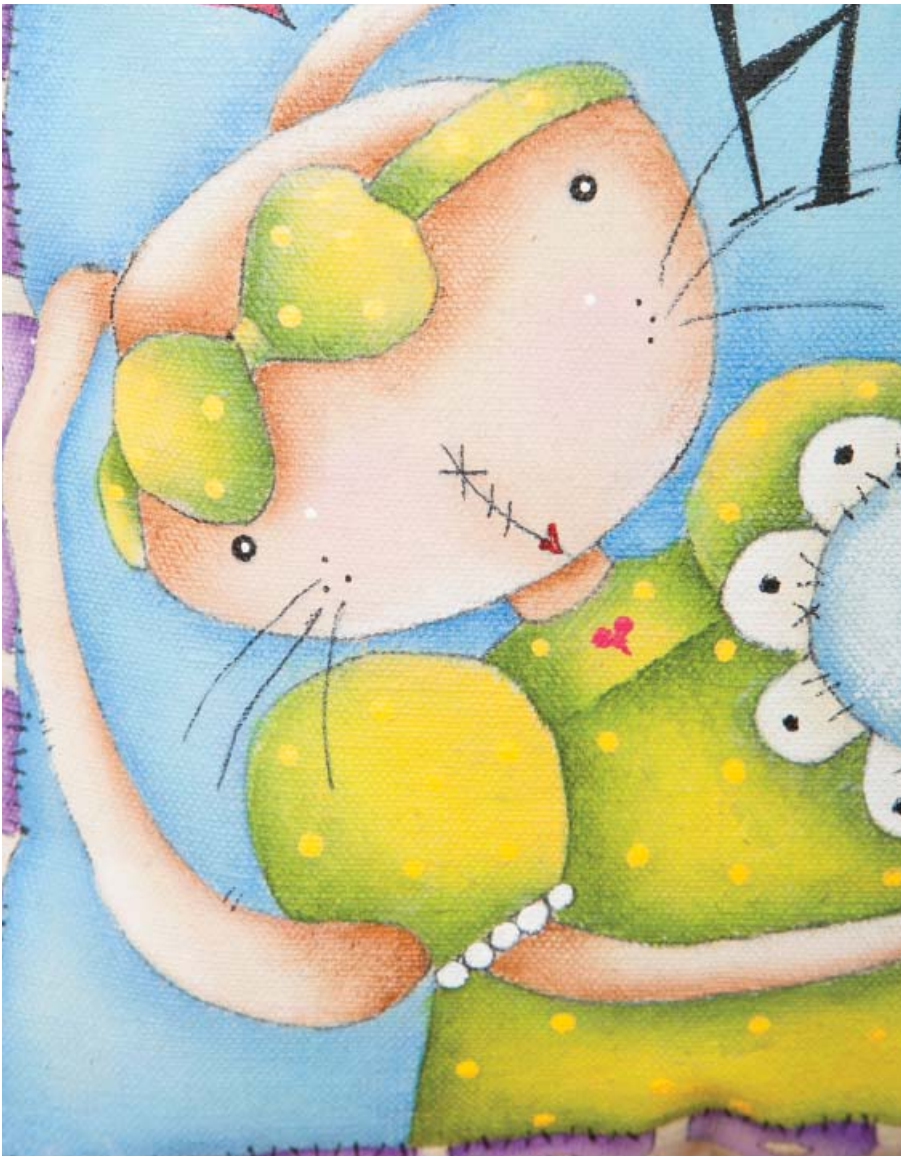
Refer to the color photo for shading and detail placement.

Note: use the “shading dots” on the pattern as a guide for shading.

To start with, it is important to not use water for this project. In place of water we are going to use the Transparent Medium. Your brush will be dressed in the medium during the whole painting process. The only time I used water was to clean my brushes between colors.

The project is painted using the wet on wet process so you will be painting (basecoat, shade and high-





light) each element separately. Starting with the head, then an arm etc. Very little paint is required – a little goes a long way.

Let's get started.

Background:

Working in small sections; coat the background with Transparent Medium. While wet, base coat with Baby Blue Deep. Alternate between the Transparent Medium and the Baby Blue Deep until the entire background is covered. Using the same brush and while still wet, pick up a little True Blue and Transparent Medium to shade around the bunny design and the outer edges.

Bunny face, ears and arms:

- Starting with the bunny's head, take a clean ½" angle shader brush and dip it into the Transparent Medium then coat the whole head, this is clear so it is ok to go over the edges.
- With the brush still wet with the medium, pick up a little bit of Natural Buff and basecoat the head under the bow. Try not to cover the bow or any other elements that will be a different color. I also try not to cover up the inked lines although

you can go back when the project is completed and dry and touch up the lines if needed.

- The basecoat does not need to be perfect; it is ok for the background to show through, I think it adds to the finished look.
- Once you have basecoated the head with Natural Buff, corner load the same brush with Burnt Sienna and shade under the bow and down the sides of the head. Pat the shading in softly to blend.
- Clean the brush with water and dry well with paper towel.
- Dress the brush with Transparent Medium, corner load into the Ivory and float the highlight on the bottom of the bunny's head, pat to blend.
- Deepen the Burnt Sienna shading now with Brown.
- Repeat this process for the ears and arms.
- Use the liner brush to paint in the bunny mouth with Red Pepper.
- Dot the eyes with Lamp Black, the dot the pupils with White.
- Drybrush the cheeks with the highlighter brush loaded with a touch of the Transparent Medium and Baby Pink Deep - wipe excess paint off onto a paper towel before applying the cheeks.

** Using the process listed above, paint the remaining design elements as follows:

Dress and Bow:

- Basecoat the dress and bow with Green Apple.
- Shade with Avocado.
- Deepen shading with Hauser Dark Green.

- Drybrush with Cadmium Yellow,
- Float highlights with Cadmium Yellow.
- Yellow dots with Cadmium Yellow.
- Add white dots to the sleeves.
- Base the heart with Red Pepper.

Heart:

- Basecoat the scallop with Buttermilk. Highlight the tips with White.
- Blue sky, base with Baby Blue Deep, shade with True Blue. Drybrush with White.
- Base the sunshine with Antique Gold. Highlight with Cadmium Yellow.
- Base the trees with Avocado. Shade left side with Hauser Dark Green. Highlight the right with Green Apple. Dot the apples with Red Pepper. Line the tree trunks with Brown.
- Base the house with Wisteria. Shade with Lavender. Drybrush with Baby Pink Deep. Deepen shading with Dioxazine Purple.
- Base the roof and the windows with Lamp Black.
- Outline the windows with White mixed with Transparent Medium to thin.
- Base the heart and door with Red Pepper. Shade with Crimson. Highlight with Baby Pink Deep.
- Dot the scallops with Lamp Black.

Bracelet:

- Dot the bracelet with Lamp Black
- Base the heart with Red Pepper.

Big Heart:

- Base with Red Pepper. Shade with Crimson. Drybrush with Baby Pink Deep.

Lettering:

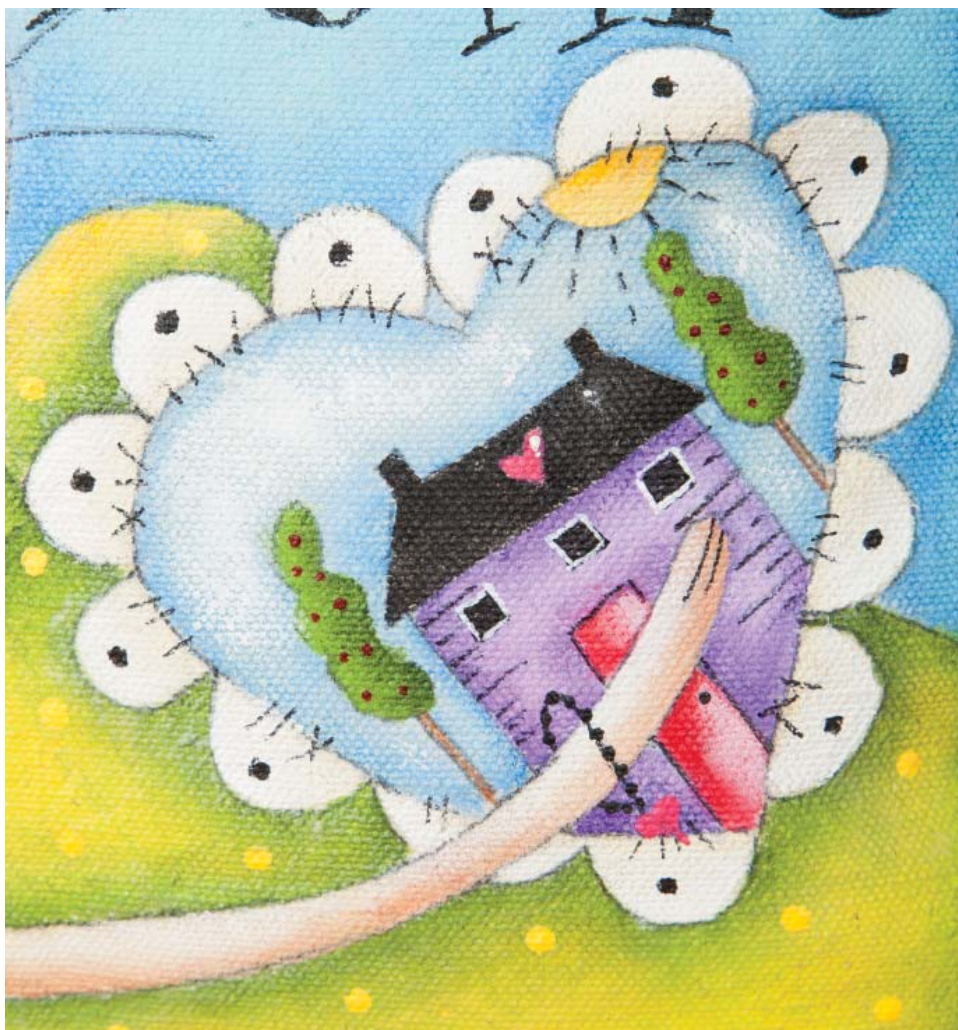
- Base with Lamp Black.

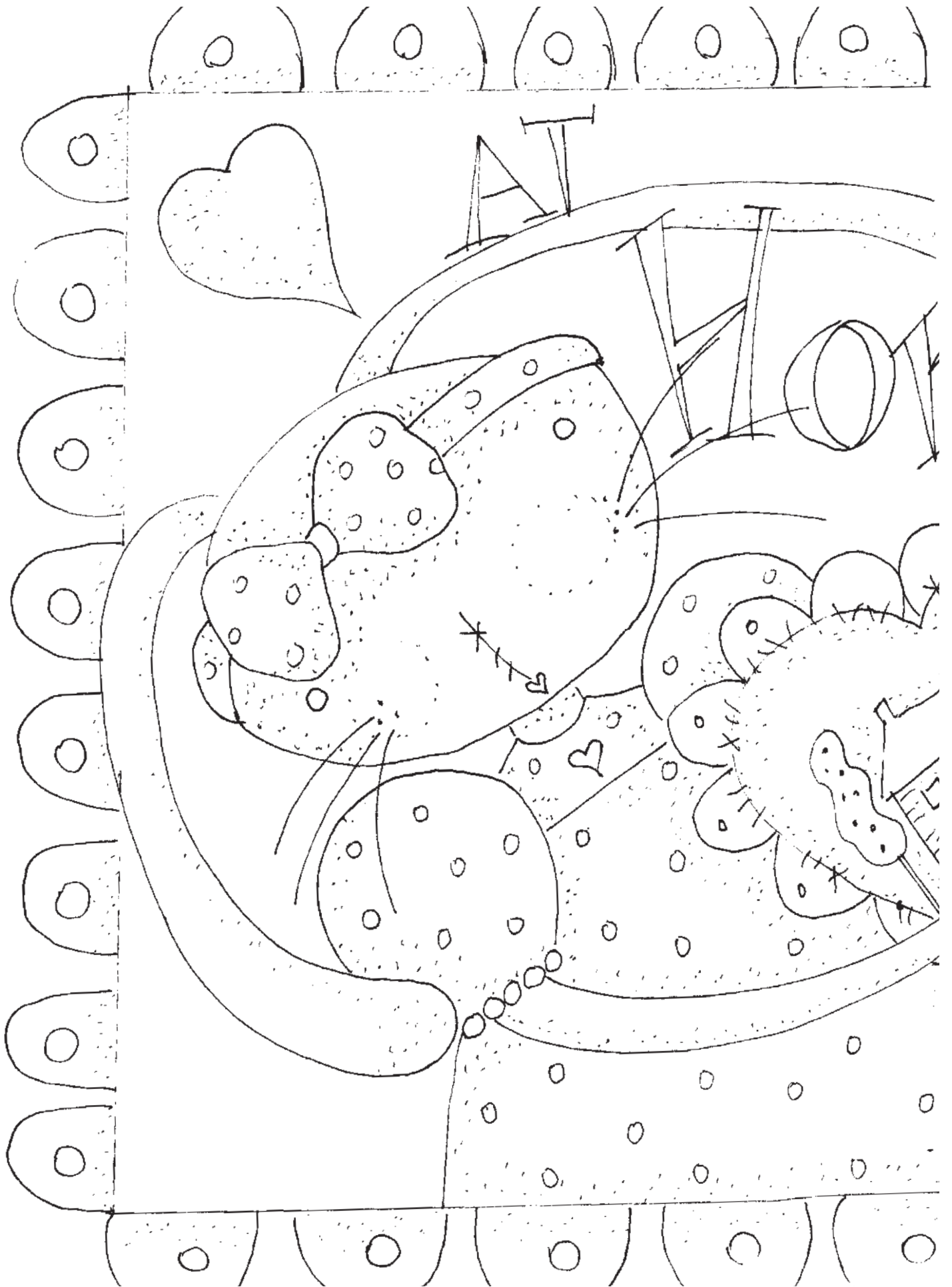
Purple border:

- Base with Wisteria. Shade with Lavender. Drybrush with Baby Pink Deep. Deepen shading with Dioxazine Purple.
- Dot the centers with Buttermilk.

Finishing:

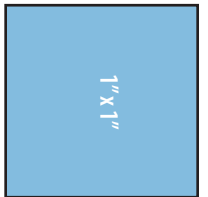
- Once the project is dry you should be able to see all your lines again. If not, you can always re-ink some of your lines.





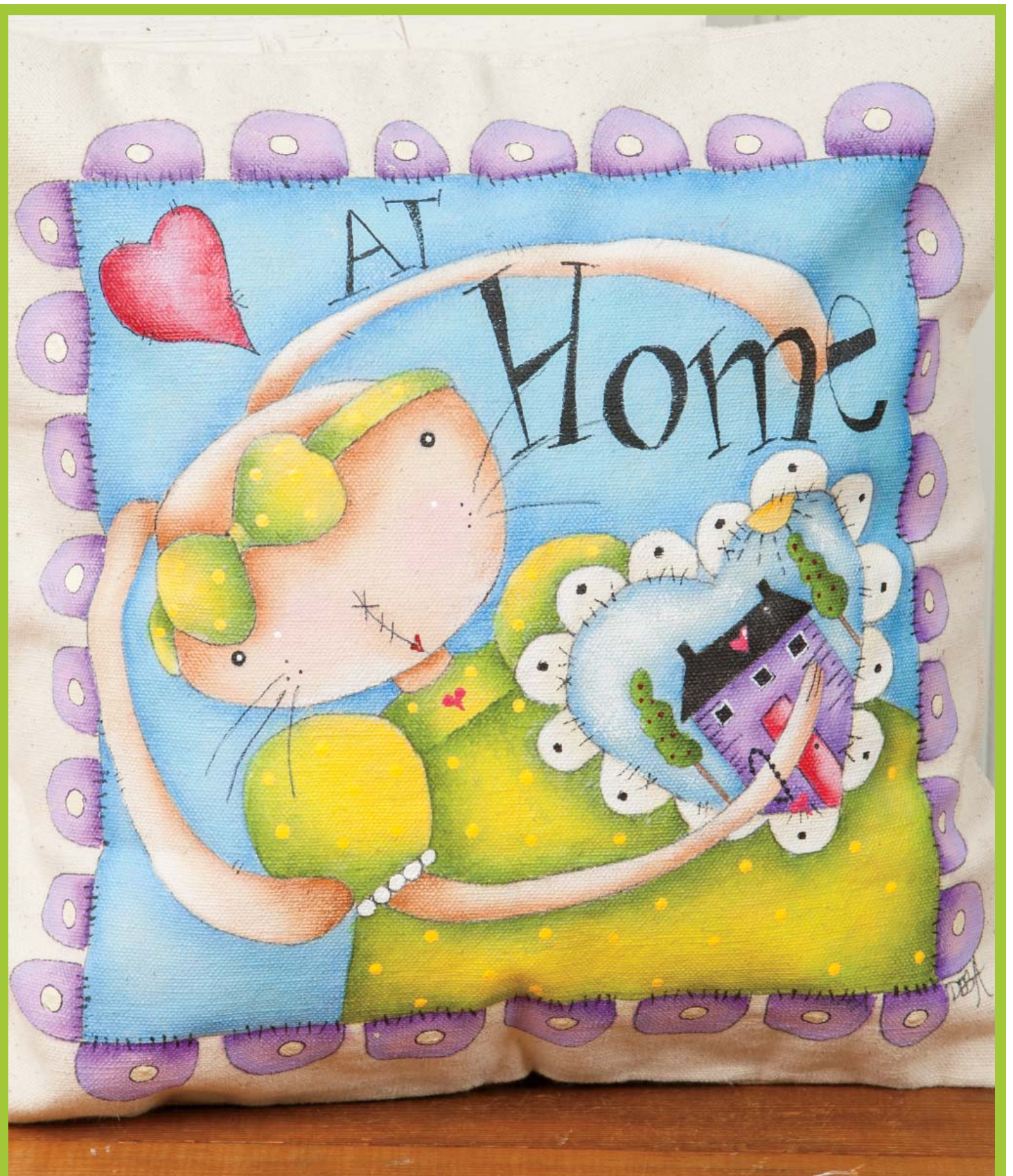


Pattern at 100%



To ensure your pattern is at 100%, this box should measure 1" x 1" when printed.

deb/12
114



Copyright 2015 by Deb Antonick and Crafts Americana Group, Inc.
All Rights Reserved. #331891

No.



© Artist's Club ®. All rights reserved. For private, non-commercial use only. Please see our web site for terms of use.