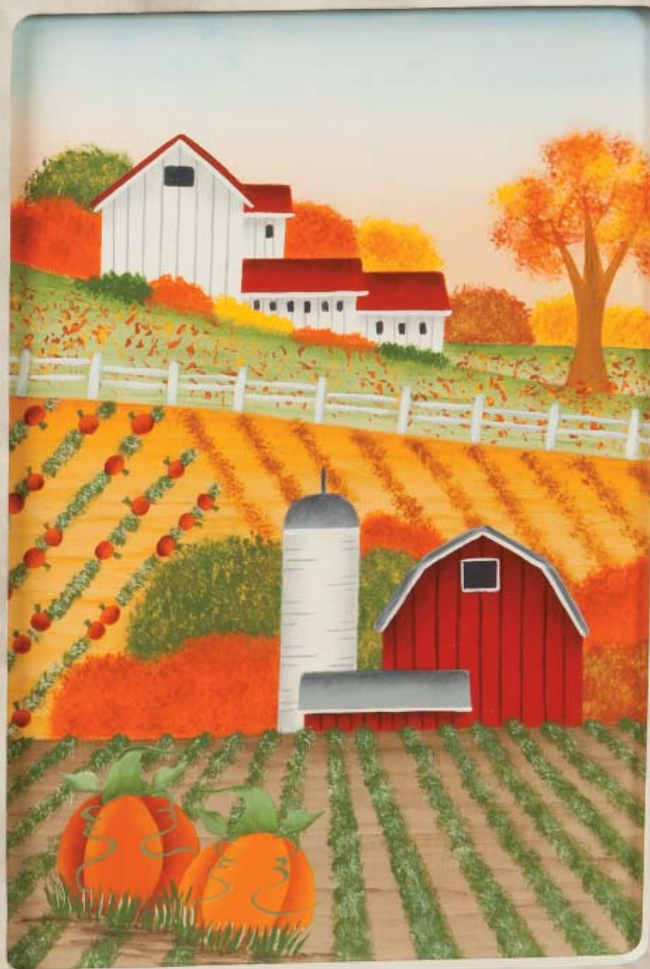


Wheeler's Pumpkin Patch

by Debby Forshey-Choma

The Artist's Club



Wheeler's Pumpkin Patch

By Debby Forshey-Choma

Palette:

DecoArt Americana Acrylics

Avocado #13052	Baby Blue #13042
Bleached Sand #13251	Camel #13191
Charcoal Grey #13088	Graphite #13161
Honey Brown #13163	Jack-o-Lantern Orange #13229
Khaki Tan #13173	Marigold #13194
Milk Chocolate #13174	Persimmon #13516
Red Iron Oxide #13096	Reindeer Moss Green #13187
Russet #13080	Slate Grey #13068
Soft Black #13155	Terra Coral #13286
Tomato Red #13169	

Surface:

Book Box with 5 inserts #62655

Misc. Supplies:

Gray Graphite Paper #70141
C-Thru Graph Ruler
Soft Grip Embossing Stylus Set #70125
Candle
Palette Knife #70194
Drawer knob of choice
DecoArt Acrylic Spray Sealer/Finisher - Matte #70836
DecoArt DuraClear Varnish - Matte #87395
DecoArt MultiPurpose Sealer #87392

Brushes:

I have used Royal Brushes for this project. Comparable Papillon by the Artist's Club brushes are in parentheses.

#1360 – Small Debby's Texture brushes (Blending Set #20168)
#1400 – ¾ SG White Blending Mop (Maxine Thomas Mop, size ¾" #27181)
#4160 – 5/8 Majestic Angular (Angular Shader, size 5/8" #20112)
#2935 – ½" Aqualon Wisp (Comb, size ½" #20153)
#4585 – 10/0, 0 Majestic Liners (Liner, size 10/0 #20145; size 0 #20146)
#3080 – 1 Oval Wash Combo (Varnish Set #20170)
#4700 – ¾ Majestic Glaze Wash (Glaze Wash, size ¾" #20102)
#4150 – 0, 2, 4, 6, 8, 12 Majestic Shaders (Shader, size 0 #20123; size 2 #20125; size 4 #20126; size 6 #20127; size 8 #20129; size 12 #20131)
#2211 – ¼" Funky Pouncer

Preparation:

1. Seal the entire book box and one insert with Wood Sealer; using the glaze wash brush. Allow to dry. Lightly sand, wipe off with a lint-free cloth. Basecoat the entire book and surface side of the insert with Bleached Sand; using the glaze wash brush, achieve an opaque coverage. Basecoat the

trim edges and backside of the front cover of the book box with Charcoal Grey; using the 12 shader.

Basecoat the side edges and back side of the insert by loading one corner of glaze wash brush with Reindeer Moss Green and the other corner with Avocado; using a slip slap brush motion, allow both colors to show. Repeat step to achieve an opaque coverage. Or you could paint another design.

Smoke Marbleizing Technique:

2. *This faux finish on the book box will accent a variety of designs you to choose to paint on the inserts. You might want to have a scrap piece of wood prepped to try this technique before going directly to the box. Also you could try using a spoon, fork or palette knife to see the different effects each one makes. I used the palette knife; to achieve my desired effect. The outside front and back of the book box are faux finished.



To smoke, light the candle in a holder and allow to burn for a few minutes, until you have a good flame. Practice moving the scooped side of the tablespoon, the fork or palette knife wiggling and moving it up and down in the flame. Watch the steady stream of black carbon rising above, this stream of smoke is what adheres to the project piece.

Hold the piece about 6" above the flame moving the piece around so that the carbon will adhere to various places. Be careful not to let the palette knife touch the surface and handle with care - the carbon will smudge. If you get too much carbon, wipe off with a soapy cloth, redo the basecoating and re-try marbleizing. When you have achieved the desired effect, spray lightly with matte spray to avoid smudging.

When marbleizing a larger or awkward piece, you will have to smoke it in sections. Smoke one section, spray, let it dry and repeat steps to the other sections until the entire piece is marbleized.

Re-basecoat the wood sides that represent pages with Bleached Sand; using the 12 shader. When dry, corner load the angle with Charcoal Grey, float along the side edges with shading.

After the piece has dried, varnish the entire piece with the Oval Wash Combo brush; it doesn't leave any visible brush stroke marks after the varnish has dried.

Painting Instructions:

Sky Area

3. Using the gray graphite paper, a traced pattern and a stylus transfer the horizon and land lines to the surface.



Use the graph ruler to aid in the transfer of any straight lines, by dragging the stylus along the ruler's edge.

Corner load the angle with Marigold + Terra Coral, brush blend on your palette, lightly float a wide tint across the horizon area that will float up to be seen above the background shrubs and structures. Mop to soften.

Corner load the angle with Baby Blue, float a wide shade across the top of the sky area; mop to soften.

Basecoating Land Areas

4. Basecoat the land areas with the appropriate size shaders –
Reindeer Moss Green – land area #1
Camel – land areas #2 & #3
Khaki Tan – land area #4

When dry, transfer the remaining design to the surface (except the foreground pumpkins).

Background Shrubs

5. With the appropriate size Texture brush, dance in the Autumn shrubs along the horizon, behind the structure setting #1 and then behind structure setting #2; with the following color scheme –
Green shrubs – Avocado then lightly with Marigold
Orange shrubs – Persimmon then lightly with Red Iron Oxide

Red shrubs – Red Iron Oxide then lightly with Marigold

Yellow shrubs – Marigold then lightly with Persimmon

For proper use of the Texture brush, use the following method. Dampen the bristles with water to start the separation of bristles. Tap bristles into the paint on your palette, hold it perpendicular to your palette, pounce it up and down to get some of the paint off – keeping the paint sparse on the brush. Note – this brush can be used on the whole foot or just the toe.

Tap lightly on the surface, dance with the brush up and down, rolling the brush in different directions in between your fingers when it is up in the air (like dancing the twist, light on your feet). Allow some drying time in between dances so the paint sets up and you don't end up with a gloppy or muddy look.

Land Area #1

6. Corner load the angle with Avocado float a wide shade across the top of the two land sections. Then randomly chisel float* Avocado shading across the land area.

*chisel float by corner loading the angle, blend off on your palette, lay the bristles of the brush flat on the surface, chisel edge up. Push the paint on the bristles from left to right in a scratching motion, allowing the bristles to pull a broken line that is slightly floated.

With the Funky Pouncer dab over the land area with the following colors to represent fallen leaves; refer to photo for placement – Persimmon, Red Iron Oxide, and Marigold





Land Areas #2 & #3

7. Corner load the angle with Honey Brown, float a wide shade across the top of the land areas. Then randomly chisel float* Honey Brown shading across the land areas.

Land Area #2 – basecoat the pumpkins in the crops with Jack-o-lantern Orange; using the 0 shader. When dry, corner load the angle with Russet, float shading across the bottom of each pumpkin. With the 0 liner and Avocado, pull the stems on the pumpkins.

With the sm Texture brush and Avocado, dance in the foliage in between the pumpkins. Lightly and randomly repeat step with Reindeer Moss Green over the foliage; for highlight.

Land Area #3 – lightly dampen the land area with clean water. Using the sm Texture brush and Milk Chocolate, dance in the crops.

Land Area #4

8. Corner load the angle with Charcoal Grey, float a wide shade across the top of the land area. Then randomly chisel float* Charcoal Grey shading over the land area.

With the appropriate size Texture brush and Avocado, dance in the foliage for the crops; the crop rows widen in the foreground; refer to photo.

Lightly and randomly repeat step with Reindeer Moss Green over the foliage; for highlight.

Autumn Tree

9. Double load the 6 shader with Honey Brown + Milk Chocolate, basecoat the tree trunk. Then up on the chisel edge, pull the branches.

With the med Texture brush, dance in the Autumn foliage on the branches with the following colors; refer to photo for placement – Red Iron Oxide, Marigold, and Persimmon

Barn Structure Setting #1

10. Basecoat using the appropriate size shaders – Bleached Sand – walls
Tomato Red + Red Iron Oxide 1:1 mixture – roofs

With Slate Grey and the 10/0 liner, pull the wall lines. Corner load the angle with Slate Grey, float shading under each roof.

Corner load the angle with Russet, float shading across the top of each roof. With Russet and the 0 liner, pull the roof lines. Using Bleached Sand and the 10/0 liner, pull the roof trim lines. With Graphite and the 0 shader, pull the windows.

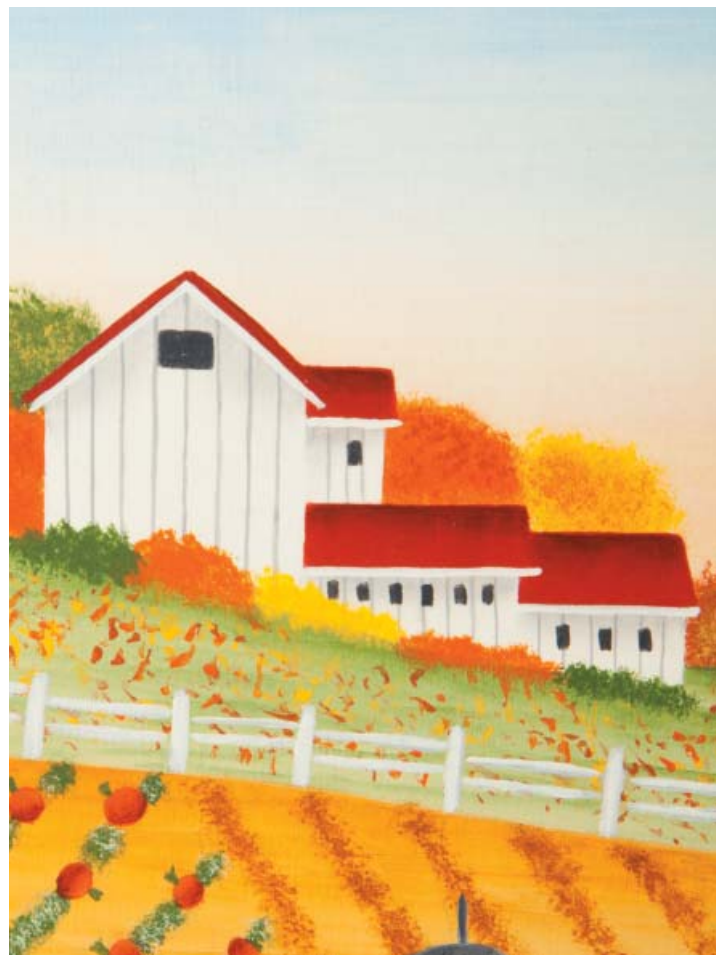
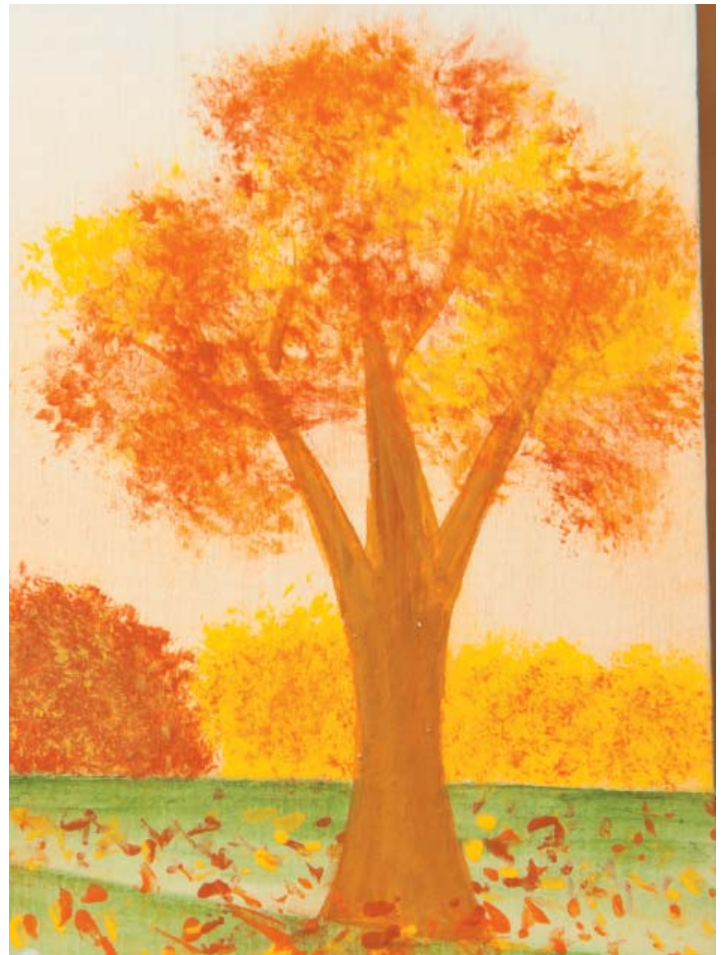
Barn Structure Setting #2

11. Basecoat using the appropriate size shaders
Tomato Red + Red Iron Oxide 1:1 mixture – barn walls
Bleached Sand – silo wall
Slate Grey – roofs

With Slate Grey and the 10/0 liner, pull the silo wall lines. Corner load the angle with Slate Grey, float shading down the left and right sides.

With Russet and the 10/0 liner, pull the barn wall lines. Corner load the angle with Russet, float shading under the roofs.

Corner load the angle with Graphite, float shading across the top of the roofs. Double load the 0 liner with Slate Grey + Graphite, pull the barn





roof lines and silo lightning rod. With Bleached Sand and the 10/0 liner, pull the roof trim lines. Basecoat the window with Graphite; using the 4 shader. When dry, outline the window with Bleached Sand; using the 10/0 liner.

Autumn Ground Foliage

12. With the sm. Texture brush, dance in the ground foliage under barn structure setting #1 in the following colors – Avocado, Persimmon, Marigold, Persimmon, and Avocado

Fence

13. Double load the 0 shader with Slate Grey + Bleached Sand, pull the fence posts and supports.



Foreground Pumpkins

14. Transfer the line drawing for the foreground pumpkins to the surface. Basecoat the left pumpkin with Persimmon, the right pumpkin with Jack-o-lantern; using the 6 shader. Basecoat the stems with a 1:1 mixture of Avocado + Reindeer Moss Green; using the 4 shader.

Corner load the angle with Russet, float shading to the left and right of the middle sections, creating three sections on each pumpkin; refer to photo for placement.

Corner load the angle with Avocado, float shading across the bottom of each stem. Double load the 2 shader with Reindeer Moss Green + Avocado, pull one stroke leaves next to the stems. Double load the 0 liner with Reindeer Moss Green + Avocado, pull tendrils.



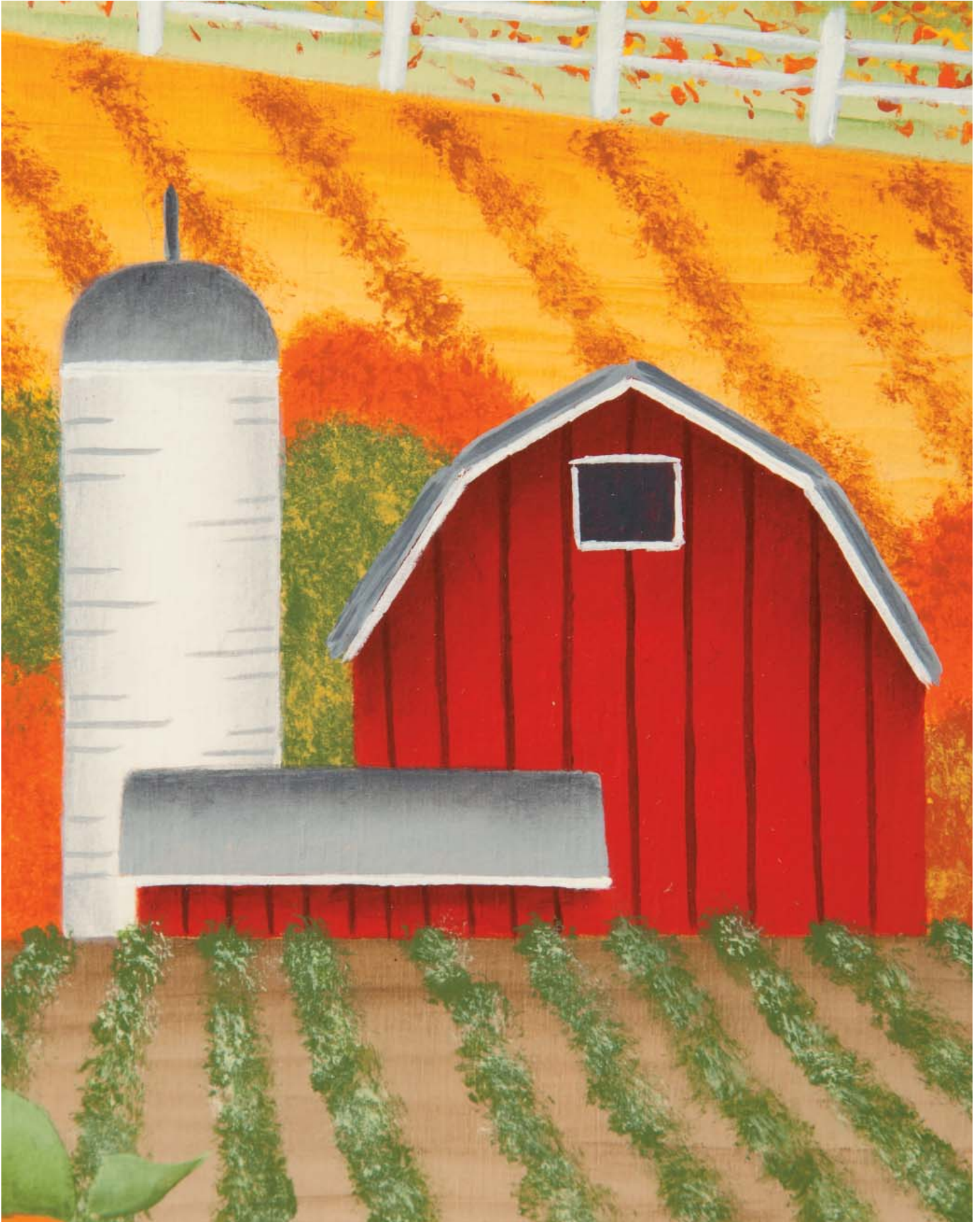
With the Filbert Wisp and Avocado, pull grass blades under the pumpkins. Repeat step with Reindeer Moss Green, randomly pulling grass blades; for highlight. Corner load the angle with Charcoal Grey, chisel float* shading under the pumpkins and grass blades.

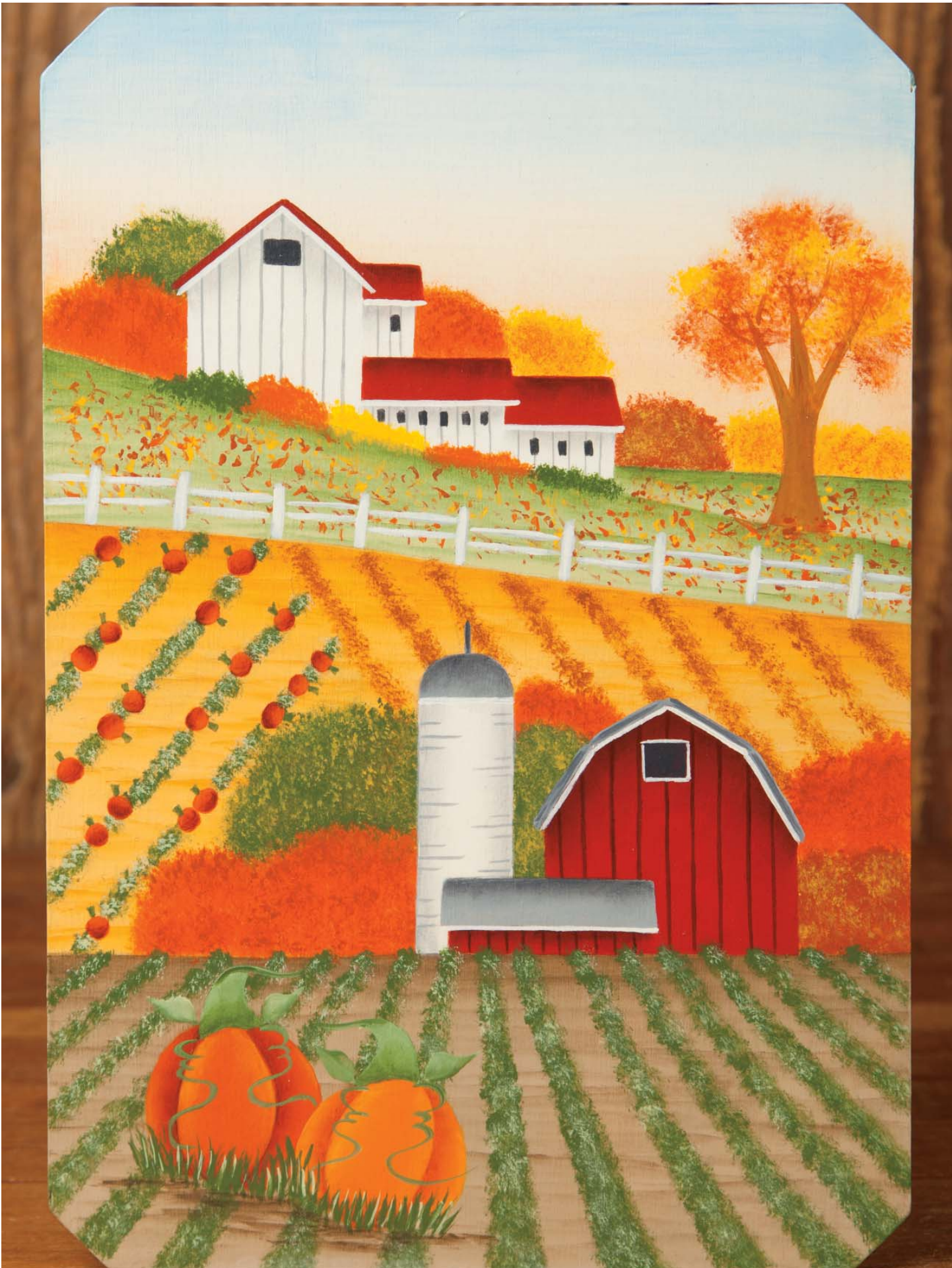
Finishing:

15. To protect finished painted pieces, varnish the entire book box and insert with the Dura-Clear matte varnish; using the Oval Wash Combo. This brush doesn't leave any visible brush-stroke marks after the varnish has dried.

Finishing Touch:

16. Glue the drawer knob to the surface of the book box.

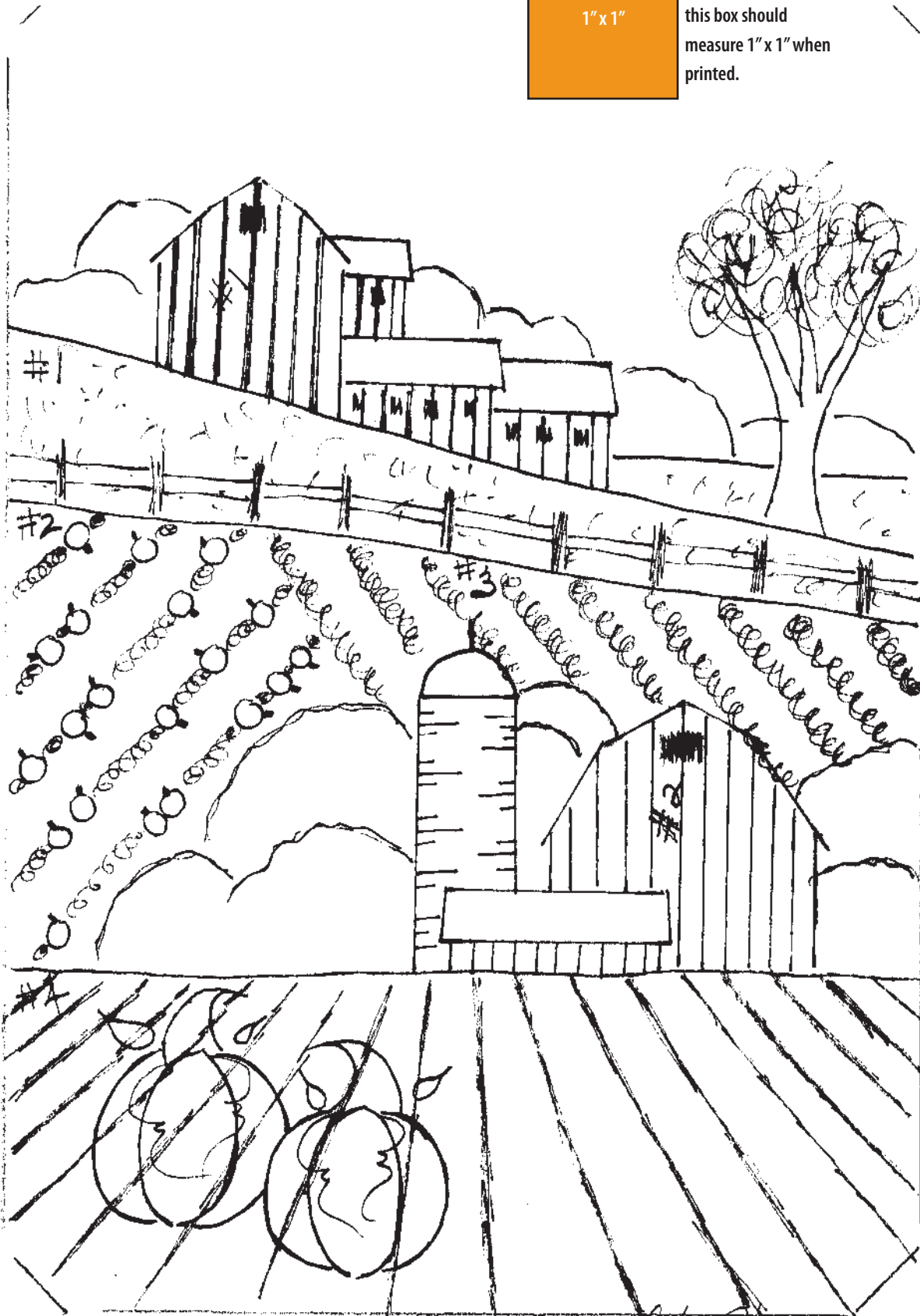




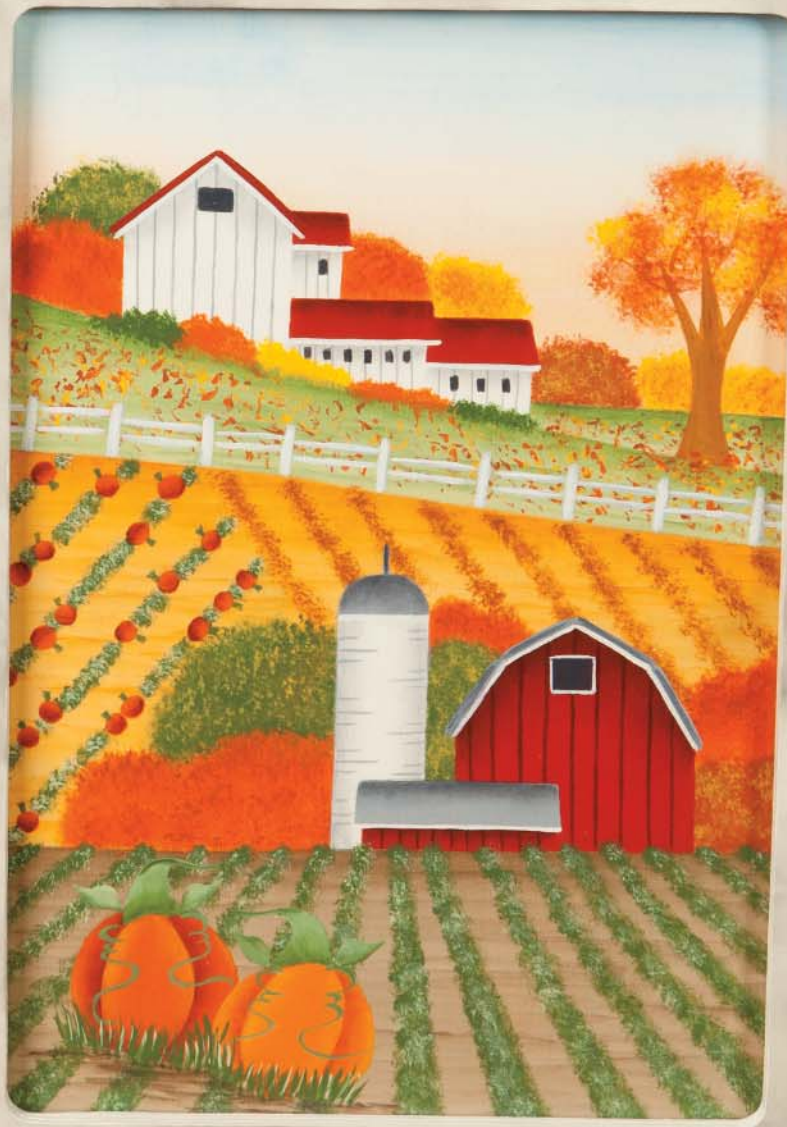
Pattern at 100%

1" x 1"

To ensure your pattern is at 100%, this box should measure 1" x 1" when printed.



Edith Forster Cott



Copyright 2014 by Debby Forshey-Choma and Crafts Americana Group, Inc.
All Rights Reserved. #331855

No.



© Artist's Club ®. All rights reserved. For private, non-commercial use only. Please see our web site for terms of use.