

# Smile

by Deb Antonick

the Artist's Club



# Smile

By Deb Antonick

---

## Palette:

### DecoArt Americana Acrylics

Black Green #13157	Black Plum #13172
Blue Chiffon #13193	Burnt Orange #13016
Burnt Sienna #13063	Country Red #13018
Evergreen #13082	Fawn #13242
Green Tea #13282	Light Buttermilk #13164
Moon Yellow #13007	Mustard Seed #13254
Napa Red #13165	Pink Chiffon #13192
Prussian Blue #13138	Purple Cow #13262
Red Alert #13536	Royal Purple #13150
Russet #13080	Spice Pink #13030
Spiced Pumpkin #13546	Traditional Burnt Umber #13221
Traditional Raw Sienna #13222	Warm White #13239
Wasabi #13519	Wedgewood Blue #13038
Winter Blue #13190	Wisteria #13211

## Surface:

Frame Board on Stand #62826

## Misc. Supplies:

DecoArt Texture Crackle #84215  
DecoArt Easy Float #87396  
DecoArt MultiPurpose Sealer #87392  
Soft Grip Embossing & Stylus – set of 3 #70125  
Palette Knife #70194  
Large Sanding Pad, Fine/Medium #70796  
DecoArt Acrylic Sealer/Finisher - Matte #70836  
Palette Paper Pad #70560  
\* Everyday Chap Stick or a piece of candle wax.

## Brushes:

### Papillon by the Artist's Club

4 Piece Highlighter set #20173  
Liner, size 2 #20148  
Script Liner, size 10/0 #20137  
Angular Shader, size ½" #20111; size ¼" #20109  
Shader, size 4 #20126; size 6 #20127; size 8 #20129

### Artist Inspired Brushes

Maxine Thomas Mop, size ½" #27179

## Tips & Techniques:

Tip: Refer to the color photo for shading and detail placement.

Drybrushing: I drybrush all of my highlights unless otherwise mentioned. The brush must be dry. When Drybrushing, I load my paint from a dry surface, not a wet palette as the moisture will get

into the brush and make the paint go on smudgy. I also keep an old towel handy; it is great for cleaning the brush between colors.

To start, load the brush by tipping it into the first color, blend out on palette paper then wipe excess paint off on a paper towel. Lightly scrub the surface to apply the color. Use the brush on its side and scrub side to side or up and down. Start soft then press harder depending how much color you need. The harder you press, the more color you will get.

The first drybrush coat should allow some of the background to still show through, additional colors should cover less area than the first coat.

Clean the brush as best you can on your old towel, then pick up the next color. Apply in the same manner using less.

Tip: I usually have several brushes on the go.

Tip: Clean brushes between colors with hand sanitizer then scrub on an old towel to dry. The alcohol dries the bristles quicker than washing.

Float / Shade: I always float my color with the angular shaders. Mop to soften with a Mop. I shade around my design elements before basecoating; I like the softer look I get when I do this. Unless otherwise indicated, I shade around the entire shape and deepen in corners and under design elements for more depth.

Tip: I like to put a few drops of DecoArt Easy Float in my water.

Tip: I float shade all my designs with a minimum of 2 colors, Drybrushing my highlights between floats.

Line: Unless otherwise stated, all lining is done with the #10/0 Liner and the paint watered down to an ink-like consistency.

Basecoat: Use the brush that best fits the size of the area to be painted.

Tip: I basecoat all my main elements first, then trace on and paint the details.

## Painting Instructions:

Seal all pieces with DecoArt MultiPurpose Sealer. Let dry. Sand lightly.

Frame:

Basecoat the frame and base with Wedgewood Blue.

Rub Chap Stick or candle wax over the edges and corners.

Base the frame with Light Buttermilk. Let dry.

Sand the frame lightly. The paint will not stick to where the Chap Stick or wax was placed. Sand just enough to remove the desired amount of paint.

Insert:

Scoop about a teaspoon of the texture Crackle out of the jar and place on a dry palette. "Smooch" it together with the palette knife to soften. Lightly apply a thin coat of Texture Crackle over the insert. Let dry.

Basecoat the insert with Winter Blue. Let dry. Sand lightly to expose a small amount (not too much) of the texture.

Trace on the design.

Shade around the entire design before painting with Wedgewood Blue. Drybrush the background with Blue Chiffon to soften.



Paint the design:

Flowers – base the petals with Light Buttermilk. Shade around the centers with Blue Chiffon. Highlight the petal tips with floats of Warm White.

Base the centers with Moon Yellow. Shade the bottom with Mustard Seed. Highlight the tops with a brush mix of Moon Yellow and Light Buttermilk. Deepen shading with Burnt Sienna. Drybrush the cheeks with Spice Pink. Dot the eyes and line the “smiles” with Lamp Black. Dot the pupils with Warm White. Line the stems with Evergreen.

Pot – base with Traditional Raw Sienna. Shade with Burnt Sienna. Drybrush with Burnt Orange. Deepen Shading with Russet. Drybrush brighter with Spiced Pumpkin. Line stripes with Spiced Pumpkin.

Bow – base with Spice Pink. Shade with Country Red. Drybrush with Pink Chiffon. Deepen shading with Napa Red. Brighten the highlights with floats of Pink Chiffon. Dot with Light Buttermilk.

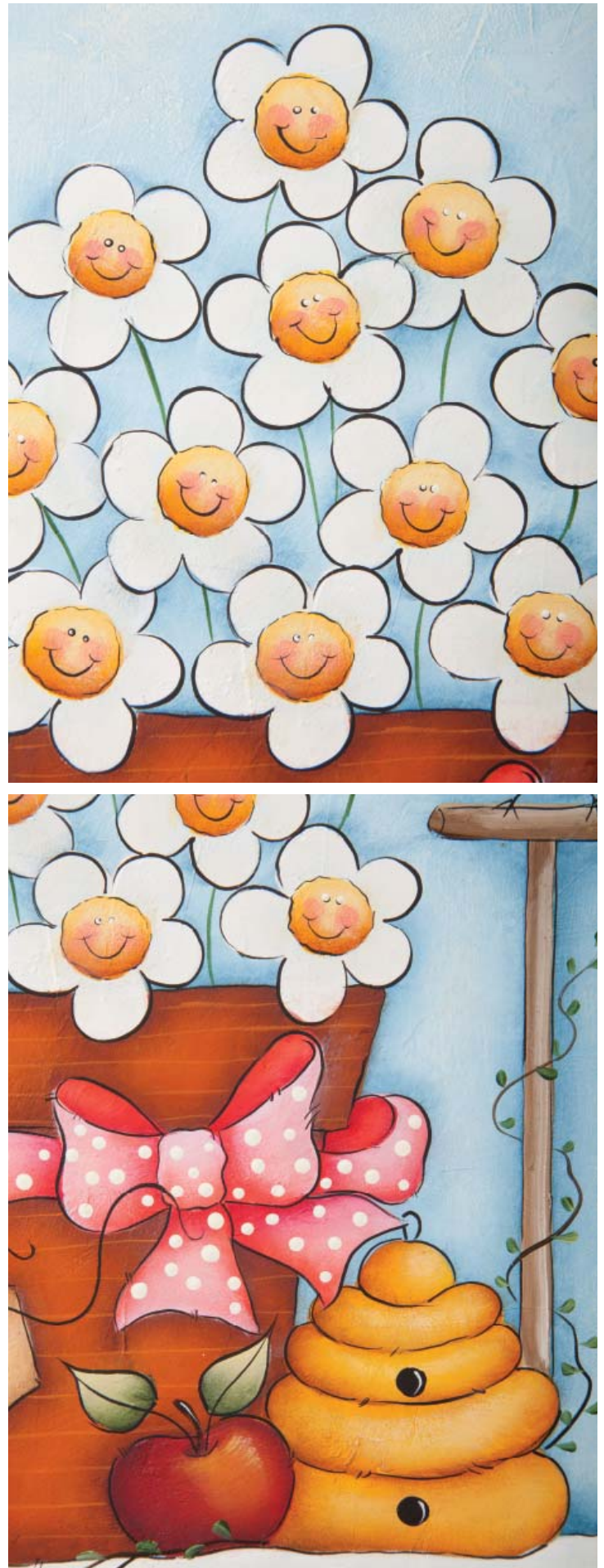
Tag – base with Fawn. Shade with Traditional Burnt Umber. Drybrush with Buttermilk. Deepen shading with more Traditional Burnt Umber if desired. Line the lettering with Lamp Black. Dot the heart with Country Red. Line a highlight with Warm White. Line the string with Lamp Black.

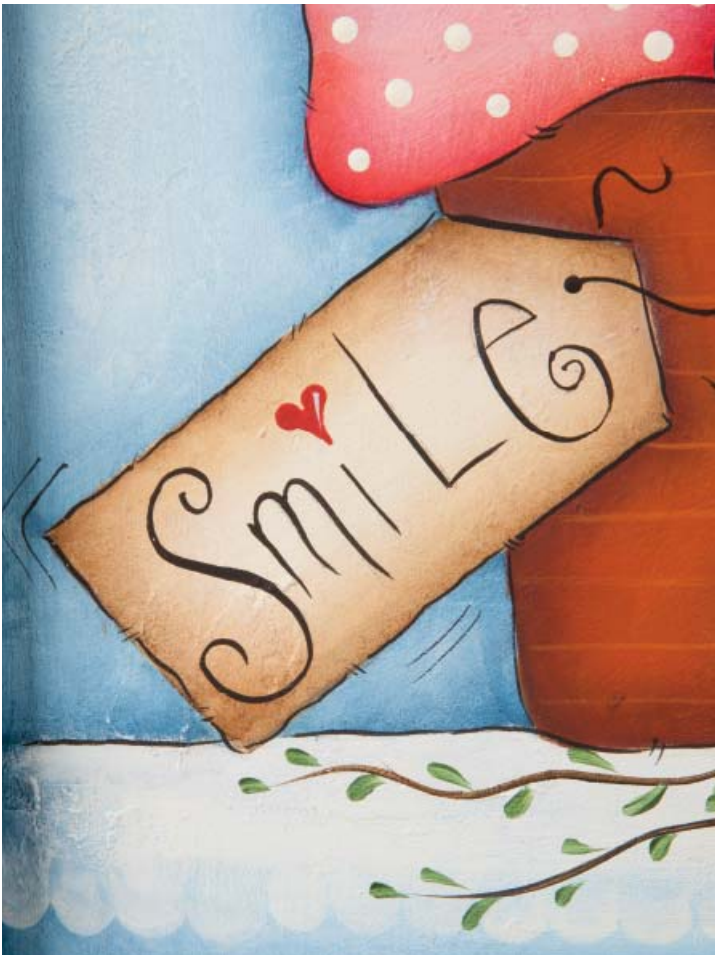
Beehive – base with Mustard Seed. Shade with Traditional Raw Sienna. Drybrush with Moon Yellow. Deepen shading with Burnt Sienna. Drybrush brighter with Moon Yellow mixed with Light Buttermilk. Base the holes with Lamp Black. Line highlight with Warm White.

Apple – base the apple with Country Red. Shade with Napa Red. Drybrush Red Alert. Deepen shading with Black Plum. Drybrush a highlight with a little Burnt Orange.

Base the leaves with Wasabi. Shade with Evergreen. Highlight the tips with Green Tea. Deepen shading with Black Green. Line the stem with Traditional Burnt Umber tipped in Lamp Black. Line highlight with Warm White.

Bird – base with Wedgewood Blue. Shade with Prussian Blue. Drybrush with a little Winter Blue. Highlight the wing and tail tips with Blue Chiffon. Base the button with Purple Cow. Shade the bottom with Royal Purple. Highlight the top with a float of Wisteria. Base the cen-





ter with Light Buttermilk. Shade the bottom with Blue Chiffon. Highlight the top with Warm White. Line and dot the "X" with Lamp Black. Dot the bird with Blue Chiffon. Base the beak with Moon Yellow. Shade with Mustard Seed. Dot the eye with Lamp Black. Dot the pupil with Warm White.

Base the post with Fawn. Shade with the brush loaded with Fawn tipped in Traditional Burnt Umber. With the same brush, pick up a little Light buttermilk to highlight.

Ground – The cloth is painted with a wash of Light Buttermilk. Drybrush with Warm White. Highlight the top with a float of Warm White. Vines – line all vines with Traditional Burnt Umber tipped in Lamp Black. Flick or tap in the leaves with the #2 liner loaded with Evergreen, tipped in Wasabi.

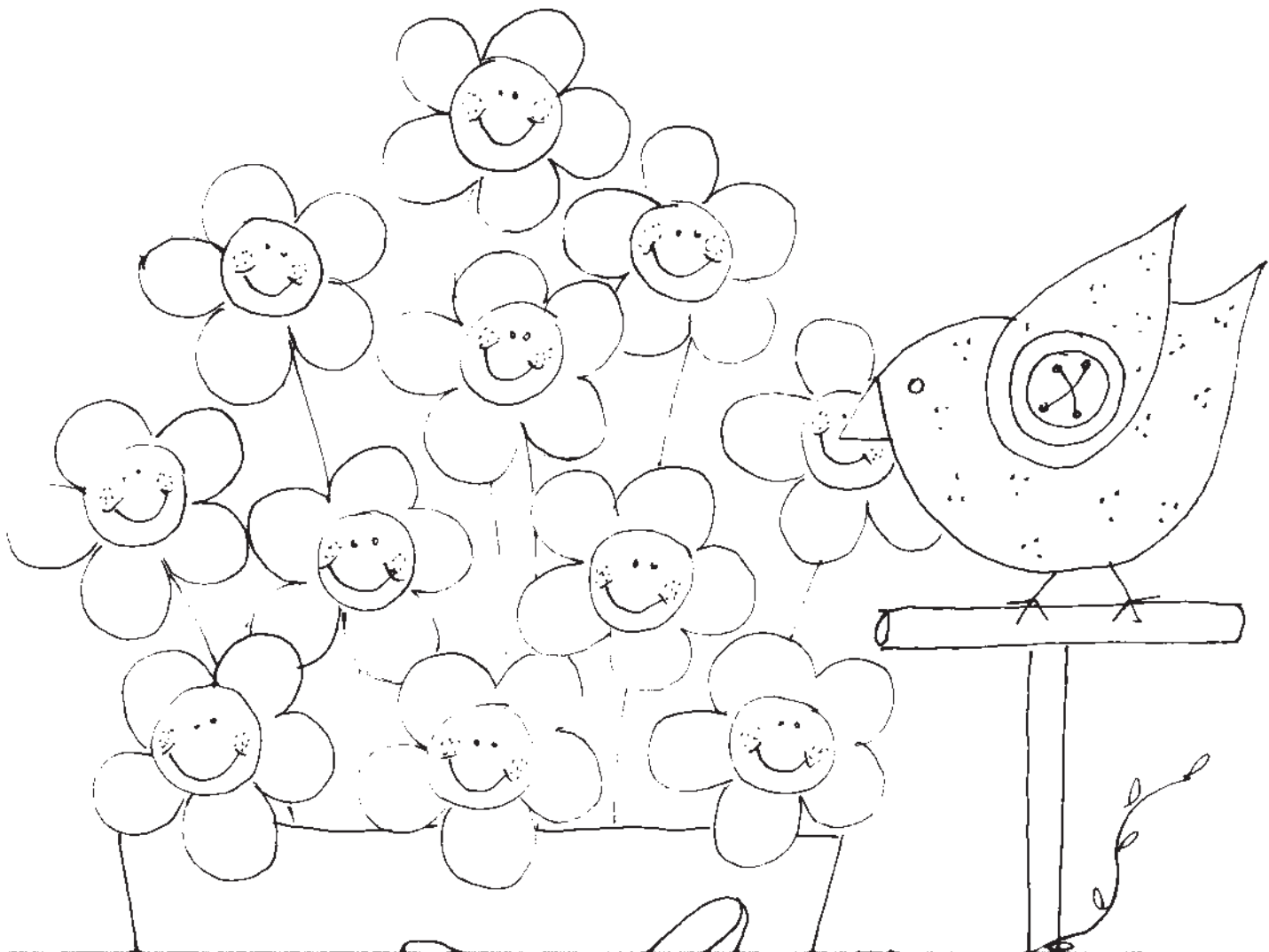
### Finishing:

Outline as desired with Lamp Black.

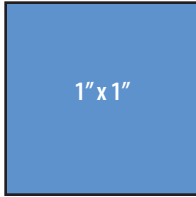
Finish with several light coats of DecoArt Acrylic Spray Sealer/Finisher - Matte.

Enjoy

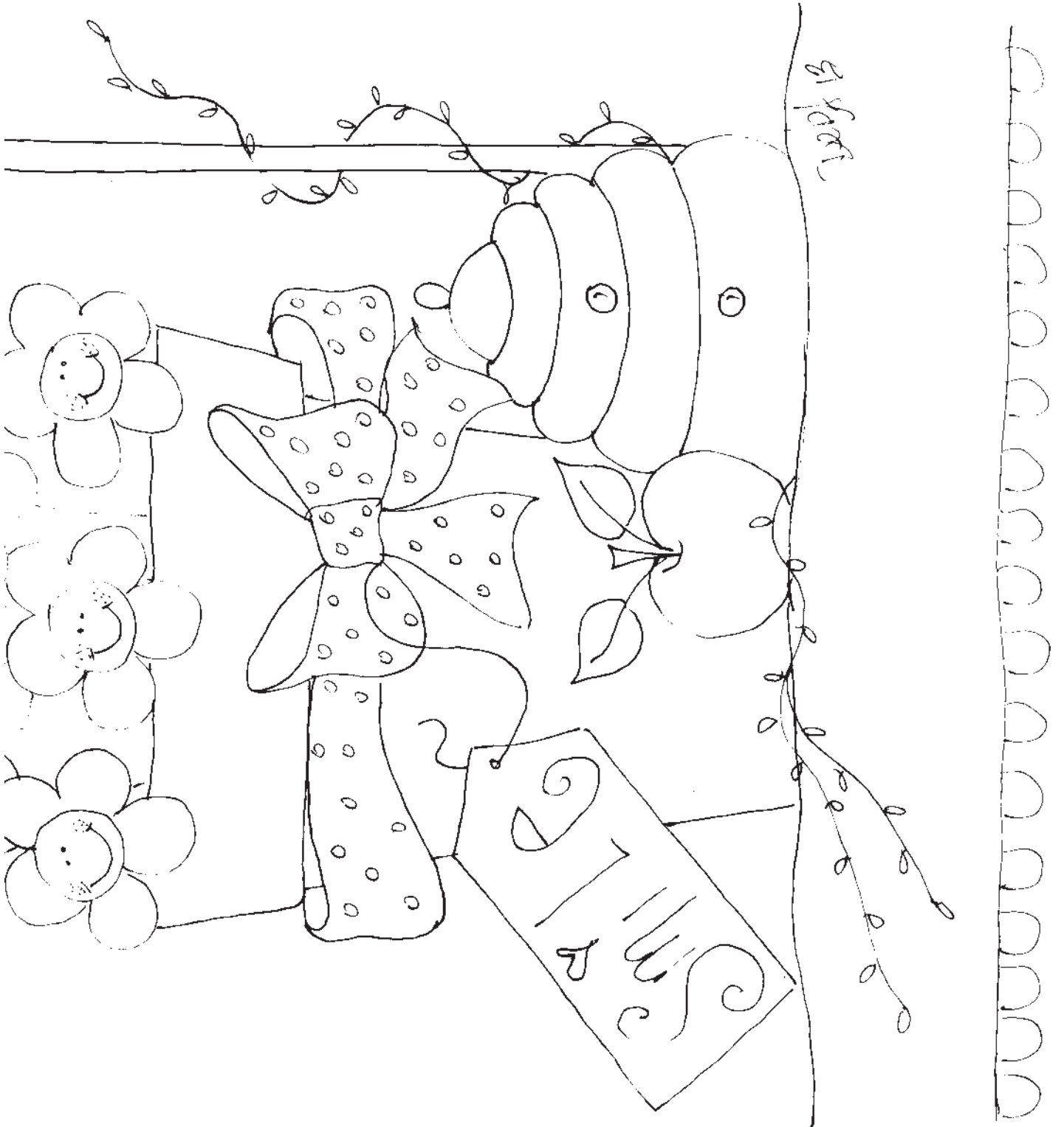




# Pattern at 100%



To ensure your pattern is at 100%, this box should measure 1" x 1" when printed.





Copyright 2014 by Deb Antonick and Crafts Americana Group, Inc.  
All Rights Reserved. #331814

No.



© Artist's Club®. All rights reserved. For private, non-commercial use only. Please see our web site for terms of use.