

# Butterfly Welcome

By Margaret Wilson

The Artist's Club



# Butterfly Welcome

By Margaret Wilson

**\*\*Please Note:** There is no line drawing included with this pattern – all of the details are embossed on the resin surface\*\*

## Palette:

### Patio Paints by DecoArt

Azalea Pink #14301

Cloud White #14309

Fuchsia #14316

Honeydew #14356

Pine Green #14328

Robin's Egg Blue #14332

Sweet Pea #14338

Carnation Pink #14306

Coastal Surf #14355

Grey Skies #14353

Marigold #14322

Pinecone Brown #14329

Sprout Green #14334

Wrought Iron Black #14344

## Surface:

Butterfly Welcome #80723

## Misc. Supplies:

DecoArt Patio Paint Clear Coat, 2 oz. #14308

## Brushes:

### Papillon by the Artist's Club

Shader, size 12 #20131

Glaze Wash, size ¾" #20102

Liner, size 1 #20147

## Preparation:

This surface comes ready to paint. Any slight imperfections can be lightly sanded. Wipe with a damp cloth.

## Painting Instructions:

Grey Skies-Basecoat the "wall" in the background. (I found it easier to basecoat the whole plaque than to do just the background.)

Wrought Iron Black – Make a dark wash and using your ¾" Glaze Wash brush, let the wash fill in all the tiny crevices in the "wall".

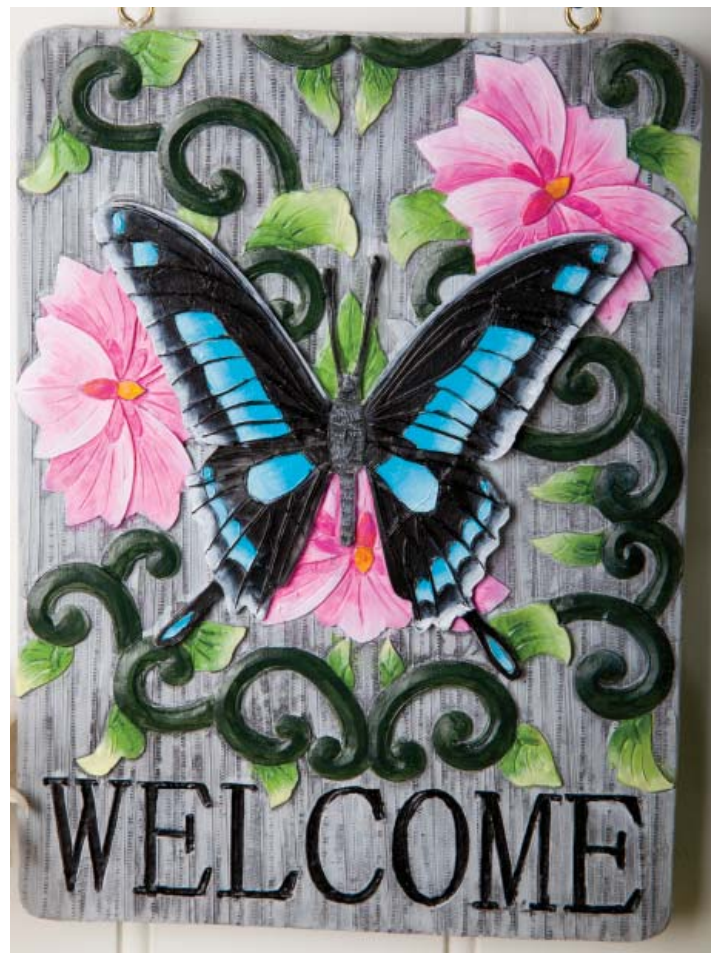
Sweet Pea – Base in all of the leaves

Sprout Green – Float a shade of the base of each leaf

Honeydew – Float a highlight at the tip of each leaf

Carnation – Base in the three flowers

Azalea Pink – Make a wash (as you did for the





“wall”) and go over the three flowers  
Fuchsia – Place a float to separate the petals and where the flowers go under the butterfly. Using your liner fill the teardrops that surround the centers

White – Float a highlight along the outer edges of the flowers and on the petals that overlap another petal

Marigold – Base in the centers of the flowers

Pinecone Brown– Float a shade at the bottom of each center

Pine Green – Base in all of the scrolls

The Butterfly

Wrought Iron Black – Base in all of the butterfly EXCEPT the areas that are based in blue. Refer to the photo.

Robin’s Egg Blue – Base in the markings on all four wings. Refer to the photo.

Coastal Surf – Float a highlight on the outer edge of each of the markings

White – Using your size 12 Shader, float a highlight along the edges of the wings

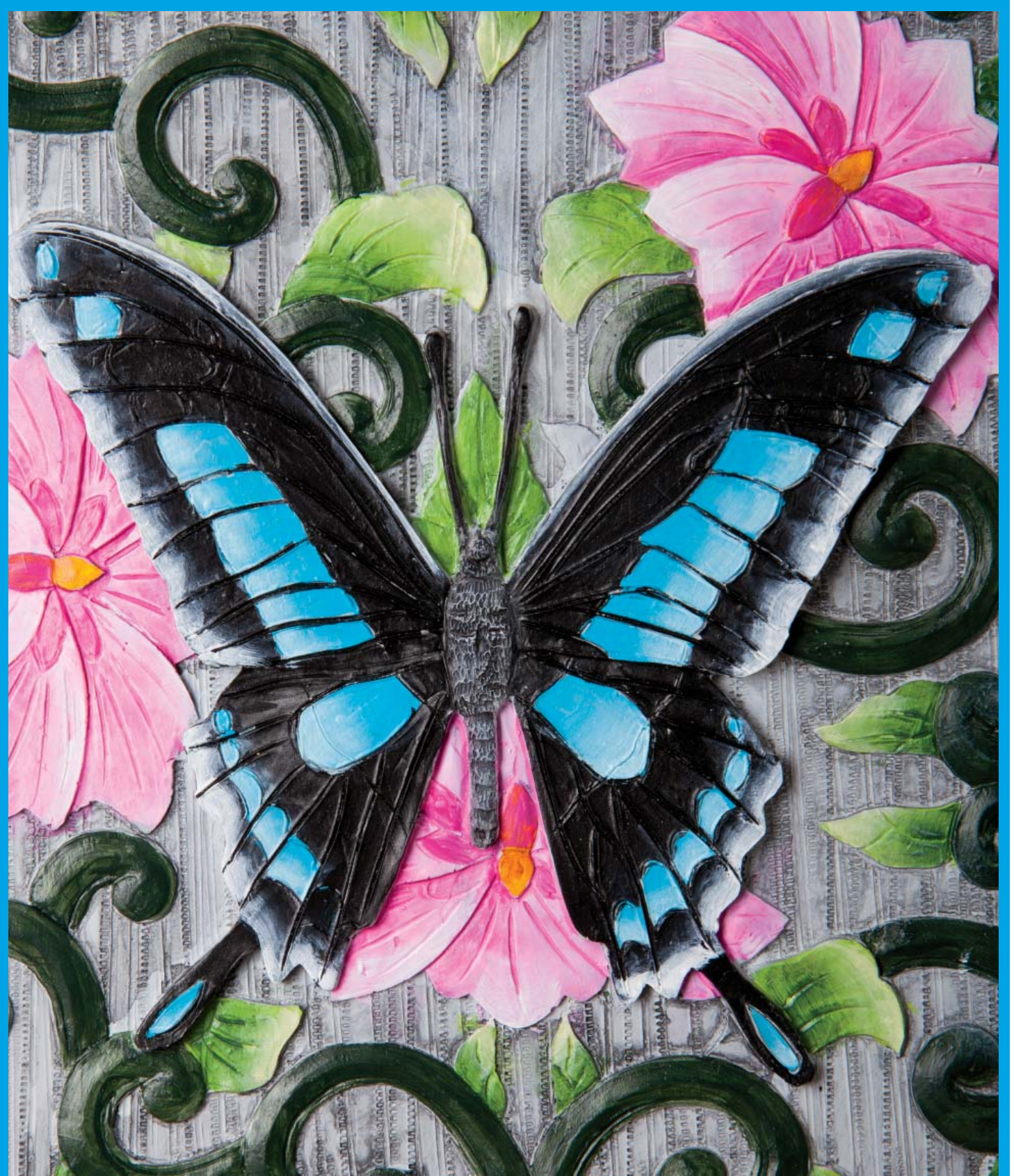
Grey Skies – Drybrush the entire body enough so that the contrast of black and grey shows.

Wrought Iron Black – Using your liner fill in the “Welcome” letters



### **Finishing:**

Patio paints do not require an additional finish, however the piece can be finished with Patio Paint Clear Coat.



Copyright 2014 by Margaret Wilson and Crafts Americana Group, Inc.  
All Rights Reserved. #331810

No.



© Artist's Club ®. All rights reserved. For private, non-commercial use only. Please see our web site for terms of use.