

Bountiful Harvest

by Barbara (Franzreb) Bunsey

The Artist's Club



Bountiful Harvest

By Barbara (Franzreb) Bunsey

Palette:

DecoArt Americana Acrylics

Antique Gold #13009

Antique Green #13147

Burnt Orange #13016

Camel #13191

Dark Chocolate #13065

Golden Straw #13168

Light Mocha #13241

Red Iron Oxide #13096

Sand #13004

Dazzling Metallics Emperor's Gold #14069

Antique Gold Deep #13146

Antique Maroon #13160

Buttermilk #13003

Canyon Orange #13238

Evergreen #13082

Honey Brown #13163

Orange Twist #13256

Saffron Yellow #13263

Spiced Pumpkin #13546

Dazzling Metallics Worn Penny #14214

Surface:

Rectangle Electric Candle Light #60082

Brushes:

Papillon by Artists' Club

Glaze Wash, size ¾" #20102

Script Liner, size 6/0 #20138

Filbert, size 2 #20116

Shader, size 12 #20131

Liner, size 18/0 #20144

Highlighter Set #20173

Misc. Supplies:

DecoArt MultiPurpose Sealer #87392 DecoArt DuraClear Varnish – Satin #87394

Preparation:

Sand the surface; seal with Decoart MultiPurpose Sealer; sand again when dry. Basecoat the surface with Sand. Transfer the main pattern lines.

Note: All basecoating is done with a thin wash of color. All shading is done with a sideloaded brush loaded with extra water, blended very well, keeping the floats very transparent.

Painting Instructions:

Pumpkin A: Base with a thin wash of Orange Twist; trace on pattern. Using dry highlighter, pick up Sand, take out excess on palette, and dry-brush on each section, following shape of section, beginning at left, and working to use less paint as you move toward right. Repeat, picking up Buttermilk in dirty brush. Using



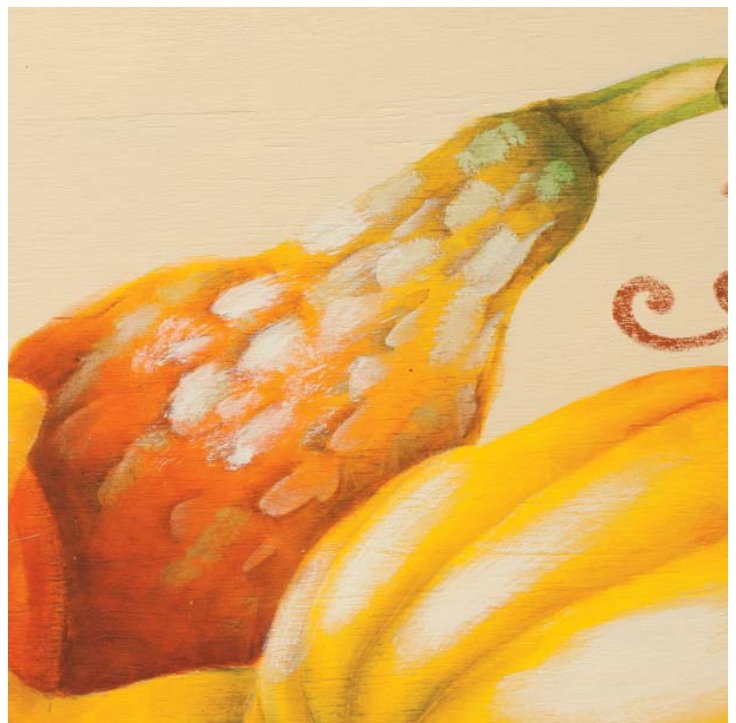
#12 shader in smaller areas and ¾" brush in larger areas, sideload into Spiced Pumpkin, and add shading to separate sections and at bottom. (Be sure to use ¾" brush at bottom for nice, wide float!) Repeat, using Canyon Orange. Add more shading to bottom areas of sections and bottom of pumpkin with Burnt Orange. Add Dark Chocolate to darker areas. Stem: Sideload #12 shader in Dark Chocolate + Honey Brown (1:1), blend, and add shading to separate any sections and at bottom. On highlight edge, add a very thin liner of this color; repeat shading with Dark Chocolate to darken. Add Evergreen to darkest areas of stem and cut edge.



Yellow & Green Gourd: Base with a thin wash of Golden Straw. Wash yellow area Saffron and green area Evergreen. Add highlight as above with Sand, then Buttermilk in dirty brush. Add thin lines with Buttermilk, following shape of gourd. Shade both sides of yellow area with Antique Gold; dry. Repeat, using Honey Brown. Add a thin float of Dark Chocolate on right bottom only. Shade around bottom edge of green area with Evergreen; repeat if necessary. Add a float of Dark Chocolate to right bottom only. Add thin floats of Burnt Orange, then Red Iron Oxide to both yellow and green areas on right side only.

Camel + Honey Brown (1:1), making float widest at bottom edge. Add more Honey Brown shading to darkest areas; repeat, floating Honey Brown + Dark Chocolate (1:1) in very darkest areas. Float Saffron to top edges of gourd. Add thin Evergreen floats to bottom of gourd.

Orange & Green Gourd: Base with a thin wash of Saffron. Shade orange area, being sure to walk color up nearly to green area, with thin Spiced Pumpkin. Repeat, using Canyon Orange, not walking up as far; repeat as above, using Burnt Orange; repeat as above, using Red Iron Oxide. Add a thin float of Antique Gold Deep to green area, beginning at top and walking down nearly to orange; dry and repeat. Add a thin float of Antique Green, walking down a little less; repeat, using thin Evergreen at top only. Add bumps to gourd with filbert and Sand + Antique Green on the green area; add Antique Gold Deep to dirty brush for bumps on orange area. Pick up a bit of Sand in dirty brush to highlight each bump. Shade around bumps and at bottom of gourd with Dark Chocolate. You may need to repeat this step at least one more time. Stem: Shade to separate sections, at bottom, and at cut end with Antique Green. Add Evergreen shading to side sections, cut end, and bottom.

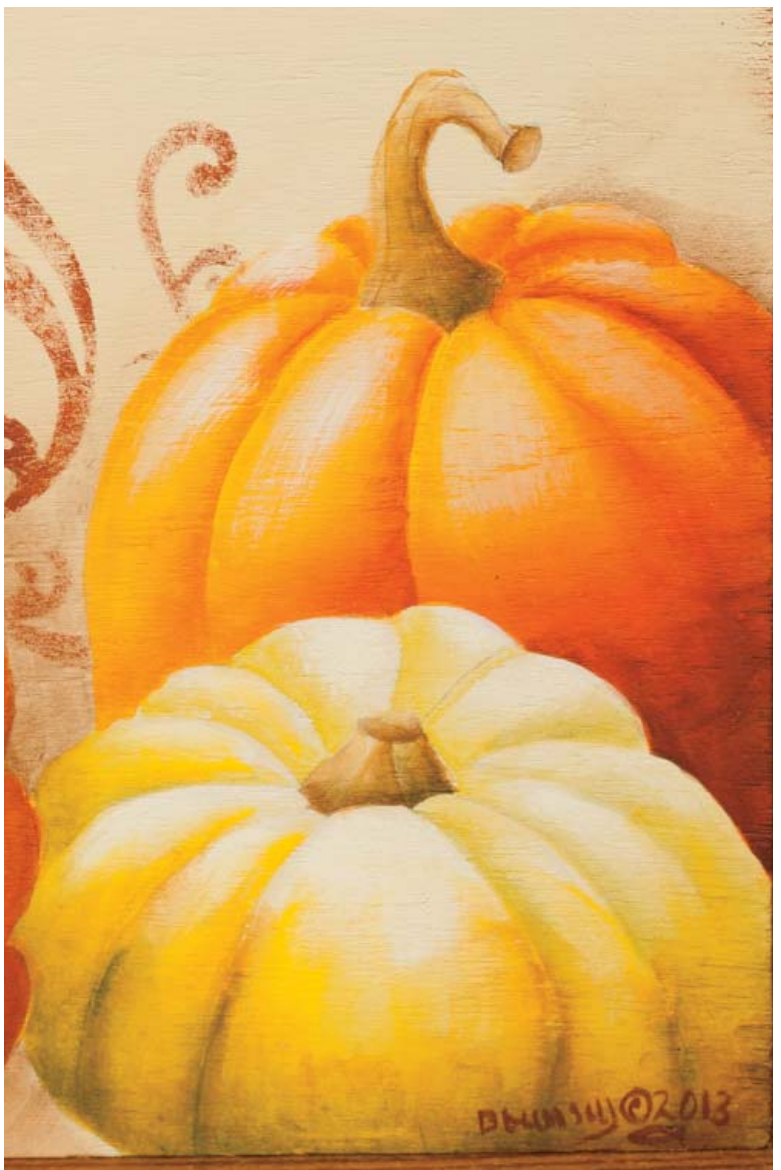


Pumpkin B: Base with a thin wash of Golden Straw. Highlight as above pumpkins with Sand, then Buttermilk in brightest areas only. Shade to separate sections and at bottom with Saffron, walking color up from bottom about half-way up. Repeat, using Antique Gold. Add Antique Gold Deep shading where you want some green, mainly at top of sections and about half-way down on a few. Add thin Evergreen floats nearest stem. Add thin Burnt Orange floats to bottom of pumpkin; repeat, with thin Red Iron Oxide. Stem: Sideload #12 shader in Dark Chocolate + Honey Brown (1:1), blend, and add shading to shadow side and at bottom. On highlight edge, add a very thin liner of this color; repeat shading with Dark Chocolate to darken. Add Evergreen to darkest areas of stem.



Pumpkin C: Follow directions for Pumpkin A, but add Red Iron Oxide floats after the Burnt Orange floats and before the Dark Chocolate.

Pumpkin D: Base Light Mocha. Highlight as above with Sand, then Buttermilk. Shade to separate sections and at bottom with thin Antique Gold Deep. Add a golden hue to bottom, front sections with Honey Brown. Shade at bottom of sections and bottom of pumpkin with Evergreen. Float or dry-brush tints of Saffron mainly on front sections. Stem: Same as above.



Shadows: Dampen area under design and between right pumpkins with water. While damp, shade with Dark Chocolate, using $\frac{3}{4}$ " brush. Add tints of Antique Maroon to top edges with highlighter brush.

Edge: Base with Antique Maroon.

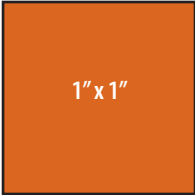
Scroll Design: Transfer the scroll design to the background on the front of the piece, and to the sides if desired. Basecoat the scrolls on the front of the piece with a mix of Red Iron Oxide + Antique Maroon. Basecoat the scrolls on the sides of the piece with a mix of Dazzling Metallics Worn Penny + Emperor's Gold.

Finishing:

Add thin floats of Antique Maroon to very darkest areas of each pumpkin and gourd as necessary (refer to the photos). Brighten up highlights as above if necessary. Finish with several coats of DecoArt DuraClear Varnish – Satin.

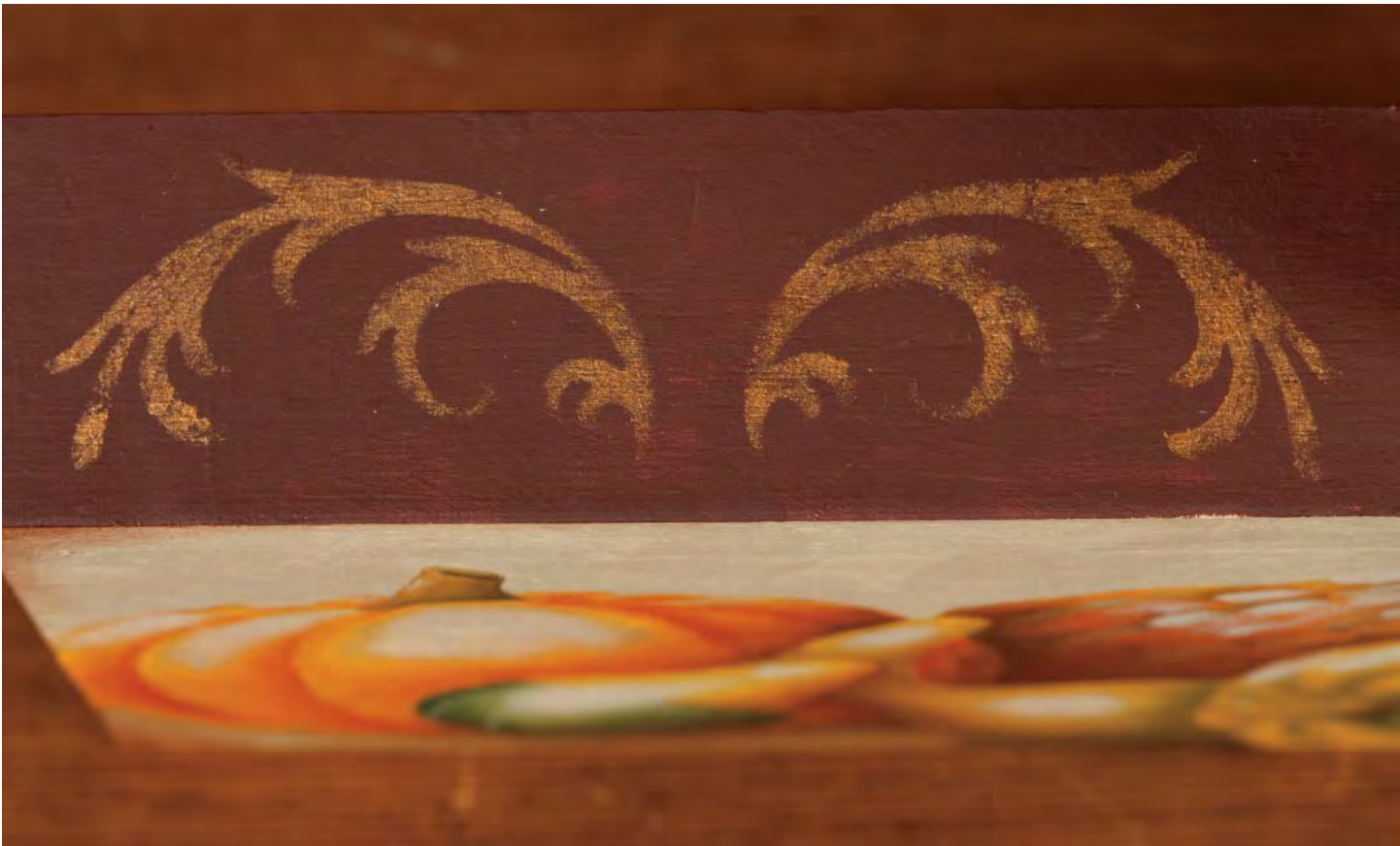


Pattern at 100%



To ensure your pattern is at 100%, this box should measure 1" x 1" when printed.







Copyright 2013 by Barbara (Franzreb) Bunsey and Crafts Americana Group, Inc.
All Rights Reserved. #331763

No.



© Artist's Club ®. All rights reserved. For private, non-commercial use only. Please see our web site for terms of use.