

Mr. Fowler

by Shirley Koenig

the Artist's Club



Mr. Fowler

By Shirley Koenig

Palette:

DecoArt Americana Acrylics

Black Green #13157

Butter #13252

Dried Basil Green #13198

Heritage Brick #13219

Lamp Black #13067

Russet #13080

Soft Black #13155

Violet Haze #13514

Bleached Sand #13251

Calypso Blue #13234

Georgia Clay #13017

Jack - O - Lantern Orange #13229

Orange Twist #13256

Sea Glass #13520

True Red #13129

Surface:

Small Shelf with Insert #62412 Inserts for Small Shelf – set of 3 #62591

Misc. Supplies:

Wedge shape make-up sponge-use scissors to trim the bottom edges making it more rounded

Cotton Swabs, dampen and use to erase small mistakes

Saral Transfer Sampler Pack #82069

DecoArt DuraClear Varnish – Satin #87394

Brushes:

Papillon by the Artist's Club

Glaze Wash, size ¾" #20102

Filbert, size 10 #20120

Round, size 1 #20157; size 4 #20161

Filbert Comb, size ½" #20106

Shader, size 8 #20129

Angular Shader, size ¼" #20109

Preparation:

Frame – Use the ¾ flat and paint the frame top and the under-side of the self with BLACK GREEN.

Use a #8- shader to paint the edge of the shelf and trim below with RUSSET. When dry lightly sand – apply a second coat.

INSERT – Use the ¾ flat - paint the back of the insert BLACK GREEN –let dry – sand and apply a second coat. Base coat the front with DRIED BASIL GREEN – let dry and lightly sand.

Painting Instructions:

BACKGROUND – Use a #10 filbert – pat a light blue-green mix of DRIED BASIL GREEN plus a touch of SEA GLASS through the center over to the left edge – picking up touches of SEA GLASS as you paint – pounce with a damp make-up sponge to blend. Add pats of CALYPSO BLUE and the light blue-green mix on the upper left corner – the light blue-green into the upper right corner – adding more CALYPSO BLUE – pounce to blend. Pat and pounce a brush mix of DRIED BASIL GREEN plus a



touch of VIOLET HAZE and a mix of DRIED BASIL GREEN plus a touch of RUSSET across the bottom. Measure up about one inch from the bottom and paint the grass. Brush mix RUSSET plus a touch of DRIED BASIL GREEN – use a ½ filbert comb – start in the center and work across to each side-fade and blend into the background. As you paint add a little darker grass with touches of RUSSET- a few lighter streaks with more DRIED BASIL GREEN. Pat and blend in the background at the edge of the board. Streak ground area below the grass using the same shades. Transfer the pattern using White Saral transfer paper.

ROOSTER – Outline with thin SOFT BLACK. Start with the tail and work forward so the strokes overlap from back to top of the head. Use a #4 round – paint the tail LAMP BLACK – highlight and shape feathers and streak with a brush mix of CALYPSO BLUE plus a dot of SOFT BLACK and a mix of VIOLET HAZE plus a dot of SOFT BLACK. Base paint below the tail down to the wing with RUSSET – darker along the outer edge using RUSSET plus a touch of SOFT BLACK. Use a #4 round and streak rust colored feathers with HERITAGE BRICK and GEORGIA CLAY. Base the wing and the rest of the body – up to the head with a blue-grey mix of CALYPSO BLUE plus a touch of VIOLET HAZE plus a dot of SOFT BLACK. Streak white feathers on the tail with a mix of BLEACHED SAND plus BUTTER - using the same white mix – thin and streak the lower body, chest, wing, upper body, neck and top of the head. Use the angular brush to float shading between the two legs, under the wing and below the head with RUSSET plus a touch of CALYPSO BLUE plus a touch of SOFT BLACK. Float and streak a spot of orange below the wing with GEORGIA CLAY plus HERITAGE BRICK. Paint the comb-below the eye and wattle TRUE RED plus a touch of JACK-O-LANTERN ORANGE – shade with HERITAGE BRICK plus a dot of SOFT BLACK – brighten with pats of TRUE RED –highlight

with BUTTER plus a dot of ORANGE TWIST – lightest is BUTTER. Paint the beak ORANGE TWIST plus BUTTER – shade with a float of SOFT BLACK. Eye is LAMP BLACK – BUTTER half circle and BLEACHED SAND dot. Add a few feather streaks along the top of the head, onto the comb with thinned BLEACHED SAND. Paint the legs and feet ORANGE TWIST plus BUTTER – shade with SOFT BLACK and pat highlights with BUTTER plus a touch of BLEACHED SAND. Float SOFT BLACK under the foot on the ground.

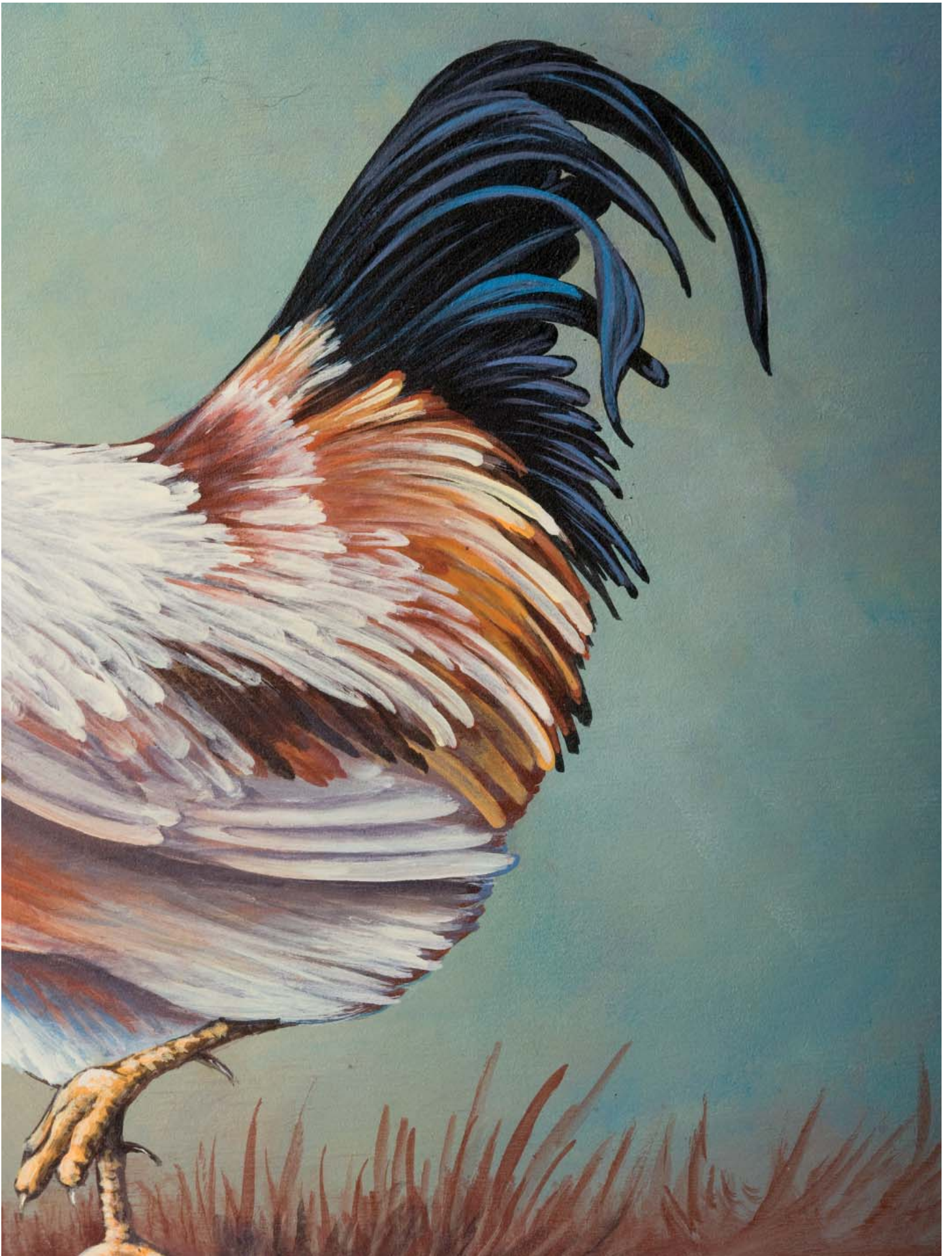
CORN – Paint each piece of corn with a flat comma stroke. Use a #4 round-load with JACK-O-LANTERN ORANGE – tip in ORANGE TWIST – press lightly-pull and lift. When dry streak a faint shadow under each piece with RUSSET plus a touch of SOFT BLACK – dot the tip with BUTTER.

Finishing:

Finish with several coats of DecoArt Dura Clear Varnish - Satin



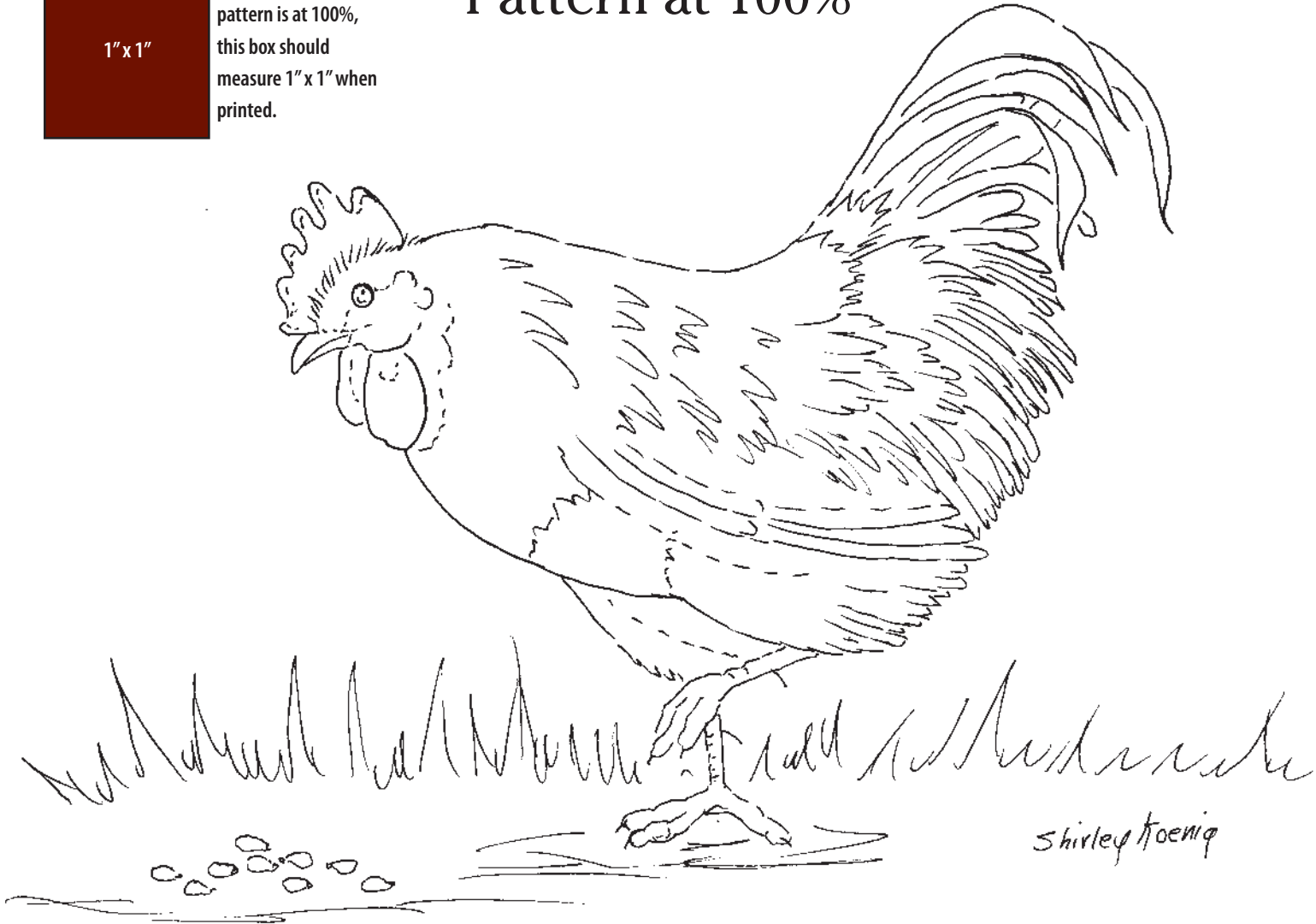




1" x 1"

To ensure your pattern is at 100%, this box should measure 1" x 1" when printed.

Pattern at 100%





Copyright 2011 Shirley Koenig and Crafts Americana Group, Inc.
All Rights Reserved. #331603



© Artist's Club ®. All rights reserved. For private, non-commercial use only. Please see our web site for terms of use.