

# Harvest Moon

by Holly Carr

The Artist's Club



# Harvest Moon

By Holly Carr

---

## Palette:

### DecoArt Americana Acrylics

Butter #13252	Calypso Blue #13234
Cocoa #13253	Dark Chocolate #13065
Deep Midnight Blue #13166	Georgia Clay #13017
Hauser Light Green #13131	Heritage Brick #13219
Jack 'O Lantern Orange #13229	Lamp (Ebony) Black #13067
Marigold #13194	Moon Yellow #13007
Orange Twist #13256	Plantation Pine #13113
Raw Sienna #13093	Sand #13004
Santa Red #13170	Traditional Burnt Umber #13221
True Blue #13036	White (Snow) #13001

## Surface:

Oval Plaque with Insert #62607  
Insert for Oval Plaque set of 3 #62608

## Misc. Supplies:

DecoArt Multi Purpose Sealer #87392  
DecoArt Staining & Antiquing Medium #84126  
White Graphite Paper #70139  
Gray Graphite Paper #70141  
Lg. Sanding Pad (fine/extra fine) #70797  
Tracing Paper Pad #83176  
Embossing & Stylus – set of 3 #70125  
DecoArt Dura Clear Matte Varnish #87395  
Sea Sponge Pack #70391  
Pencil  
Art Eraser 3 Pack #70202  
Paper Towel (blue shop towels)  
Oak Leaf Stencil or Punch Stamp  
Weathered Wood #84146

## Brushes:

### Papillon by the Artist's Club

2 pc. Finish Set #20170  
4 pc Highlighter Set #20173 (used for dry rubbing)  
Glaze Wash, size 1" #20103  
Round, size 2 #20158  
Shader, size 2 #20125; size 10 #20130  
Liner, size 10/0 #20145  
Script Liner, size 18/0 #20136



### **Preparation:**

Sand surface. Wipe away dust. Seal with DecoArt Multi Purpose Sealer. Dry. Sand again. Wipe away dust.

Frame: Mix 1:1, DecoArt Staining & Antiquing Medium & Dark Chocolate. Brush on front & back. Wipe excess with a clean shop towel. Let dry. Finish with Dura Clear Matte Varnish.

### **Painting Instructions:**

Use the appropriate size brush for each application. Basecoat the insert Deep Midnight Blue. Repeat as necessary until completely covered; allowing coats to dry in between. Trace on the moon, stars, tree and the ground line.

**Moon:** Base the moon with watered down Butter. Keep the paint a little thicker than a wash. While the paint is still wet, stamp with a dry sea sponge. This will add texture and depth to the moon. Allow to dry. Shade the right side of the moon, Moon Yellow. Walk the paint towards the center of the moon. Dry rub a hazy cloud across the moon and into the sky using Butter. Add highlights to the cloud with a dry rub of Snow White.

**Stars:** Line & dot Moon Yellow.

**Ground:** Dry rub Butter on the ground area. With a dirty brush pick up Moon Yellow and dry rub again. Continuing with a dirty brush, pick up Dark Chocolate. The entire area does not have to be covered with solid paint. The Midnight Blue should still show through. If the ground is too bright

or too dark, use a clean brush and dry rub some more. Use the Dark Chocolate to darken and the Moon Yellow to lighten. Trace on the rest of the basic pattern, adding details as needed.

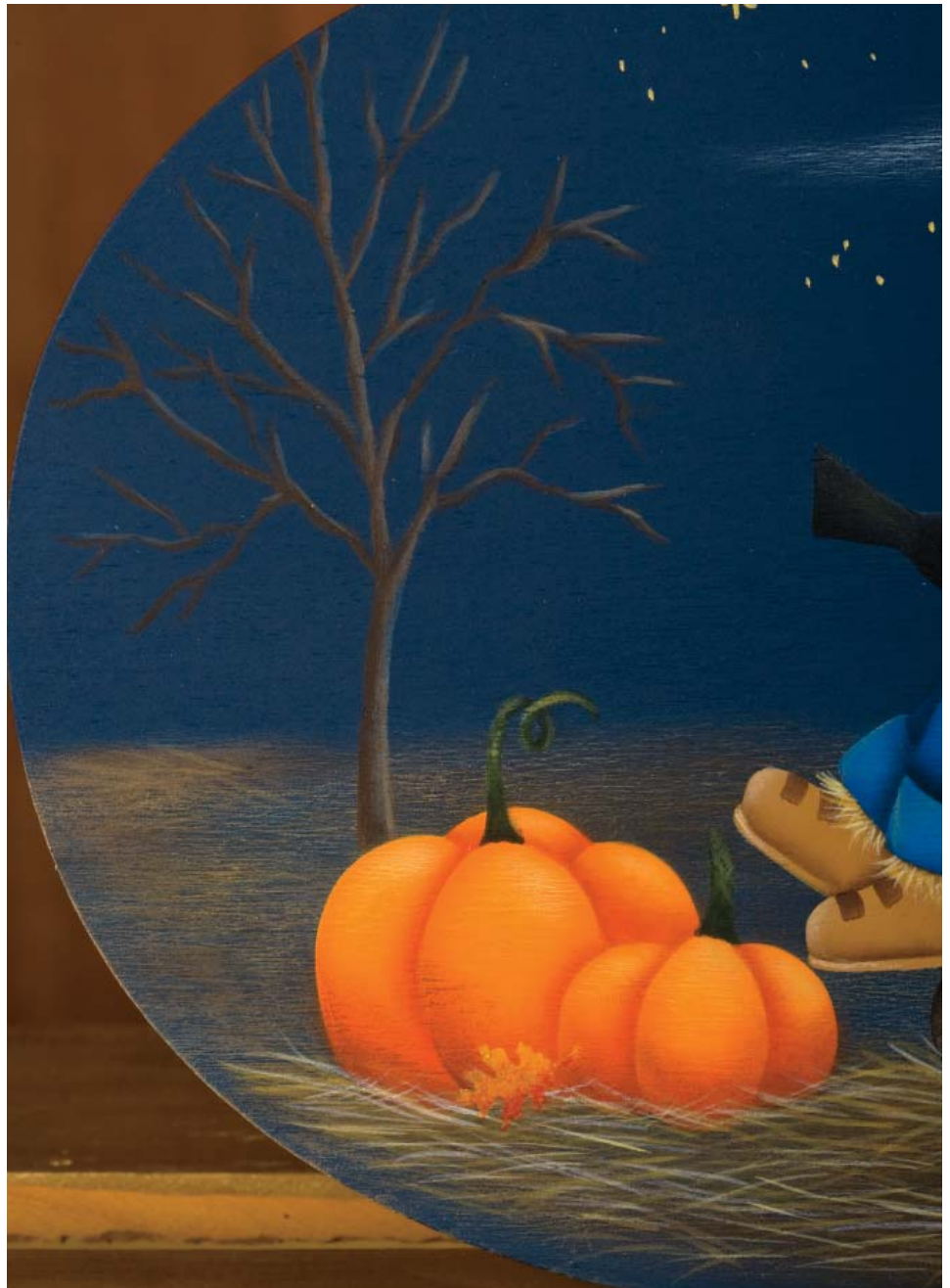
**Tree:** Base the trunk of the tree & line the branches in Dark Chocolate. Using Dark Chocolate and a touch of black (Keep it more brown than black) line some shading on the underside of some of the branches. Shade the left side of the tree with the same mixture. Add some touches of highlights with Moon Yellow being careful not to make it too bright.

**Wheelbarrow:** Base Cocoa. Apply crackle medium. Allow to dry. Paint Dark Chocolate over crackle medium. Let dry completely. Rub on some Traditional Burnt Umber and wipe off excess. This will fill in the cracks. The cracks will add texture to the wheelbarrow. Highlight by dry rubbing with Raw Sienna in the middle part of the wheelbarrow working your way out towards the sides but not going all the way to the sides. Add some touches of highlights to the legs

& handle as well. Keep the brush dirty and pick up some Cocoa and dry rub the same areas again. To make divisions for the boards on the wheelbarrow, line with Black. The lines do not have to be perfectly straight. Making them a little crooked will make them look old. Using Black, dot some nails in the ends of the boards. Shade the wheelbarrow with Traditional Burnt Umber & Black. Shade all the edges of the wheelbarrow, the wheel, the legs & handle and around the scarecrow's body. Deepen some of the shading with Black only.

**Scarecrow:** Base the face & hands with Sand. Shade along hat & shirt cuff with Dark Chocolate. Base the nose Heritage Brick. Shade on bottom side, Traditional Burnt Umber. Highlight Moon Yellow. Dry rub the cheek Heritage Brick. Line the eyes and mouth Lamp Black.

**Overalls:** Base True Blue. Shade Deep Midnight Blue. Dry rub highlights with Calypso Blue on the his belly, legs and the fold on his overalls. The patch is Moon Yellow. The stitches on the patch are black. Also shade the outline of a pocket with Deep Midnight Blue. Add stitch marks with Snow White. The shirt is Deep Midnight Blue. Add plaid in Heritage Brick stripes & White Stripes. Shade with Black. The button on the cuff is Calypso Blue.



Hat: Base Cocoa.  
Base the band Heritage Brick. Shade the hat Dark Chocolate. Highlight with Moon Yellow.

Boots: Base Cocoa. Shade with Dark Chocolate. The straps on the boots are a coat of Dark Chocolate. Highlight the boots Moon Yellow.

Pumpkins: Base Jack 'O Lantern Orange. (This is a transparent colour.) Add white to the Orange to make it opaque. Apple 2-3 coats for good coverage, allowing it to dry in between coats. Next paint with Jack 'O Lantern Orange only. Apply a couple of coats to cover completely. Shade to define the sections of the pumpkins with Georgia Clay. High-

light by dry rubbing Orange Twist in the middle of the sections. With the brush still dirty pick up Moon Yellow and dry rub again. Still keeping the brush dirty, pick up Sand and dry rub again. Keep this highlight towards the top portions of the pumpkins. Shade again with Georgia Clay if needed. When the shade is dry, dry rub Georgia Clay next to where it was shaded and walk it out following the shape of the pumpkin. Deepen this shade by adding some Dark Chocolate. Base the stem Plantation Pine. Line some highlights with Hauser Light Green. Shade Black.

Crows: Base body & legs Lamp Black. Beak is Cocoa. Dot eyes Snow White. Highlight back of birds with Moon Yellow.

Straw: Line the straw on the ground and on the scarecrow (one colour at a time), Raw Sienna, Cocoa, Marigold, Moon Yellow and ending with butter. Keep the straw light and airy. This should not be a solid in colour.

Oak Leaves: I did not have an Oak Leaf stencil, so I purchased an oak leaf punch stamp in the scrapbooking section of a local craft store. I punched out a leaf on a piece of scrap paper and used



it like a stencil. Make a stencil for each leaf. Double load a stipple brush with Marigold & Santa Red and stipple on the leaves. Or trace on the leaves and paint them in Marigold & Santa Red so some of the leaf is yellow, some red and some orange where the two colours meet.

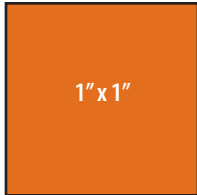
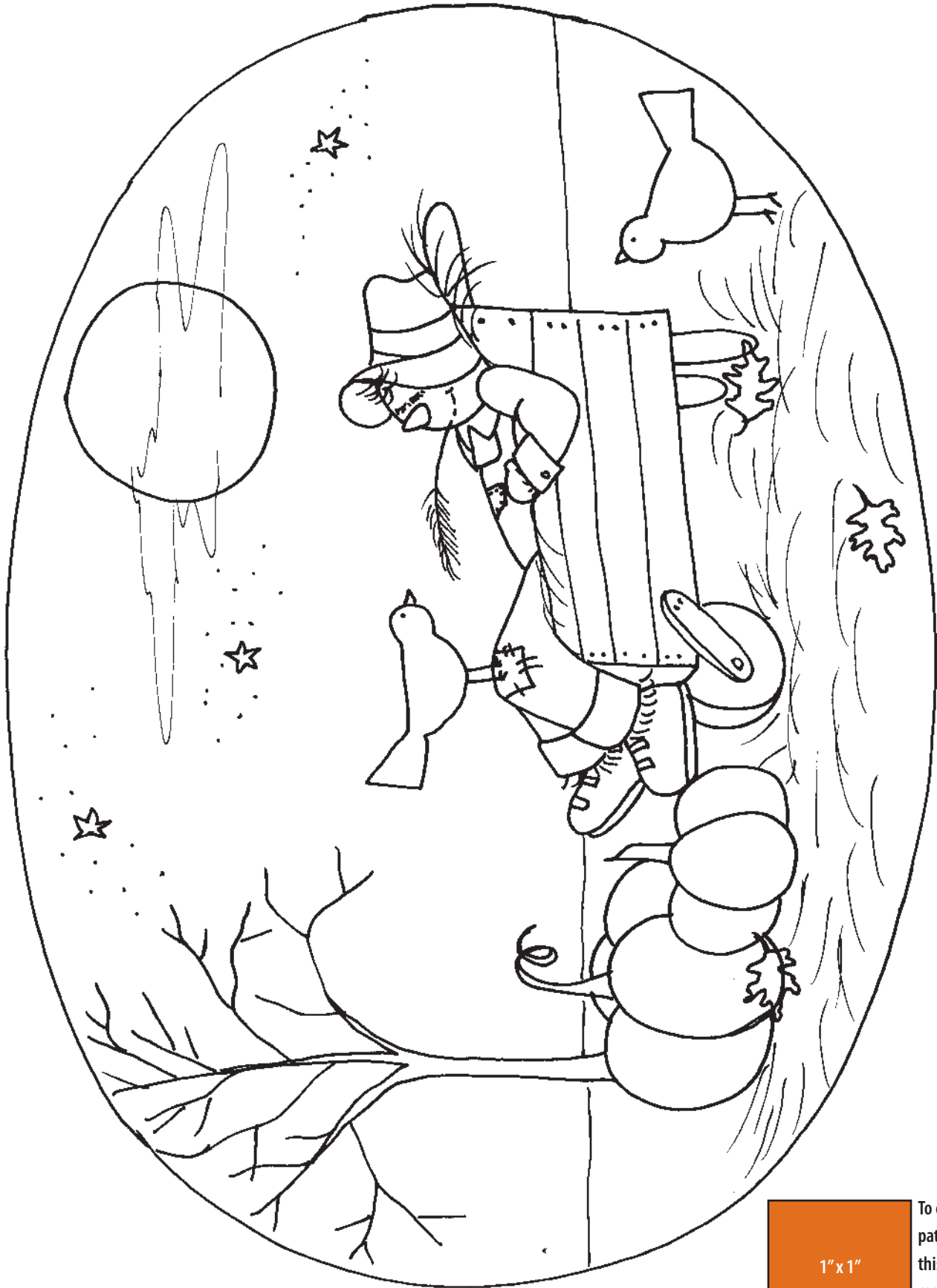
Frame: Mix 1:1, stain medium & Dark Chocolate. Brush on front & back. Wipe excess with a clean shop towel. Let dry. Seal with Dura Clear Matte Varnish.

### Finishing:

Finish the back of the insert with stain medium and Dark Chocolate. Mix 1:1. Brush on surface and then wipe with a clean shop towel. Let dry & seal entire insert with Dura Clear Matte Varnish.



# Pattern at 100%



To ensure your pattern is at 100%, this box should measure 1" x 1" when printed.



Copyright 2011 Holly Carr and Crafts Americana Group, Inc.  
All Rights Reserved. #331592



© Artist's Club ®. All rights reserved. For private, non-commercial use only. Please see our web site for terms of use.