

Snowflakes and Winter Kisses

by Kim Hogue, CDA

The Artist's Club



Snowflakes and Winter Wishes

By Kim Hogue, CDA

Palette:

DecoArt Americana Acrylics

Antique Teal #13158
Blue Mist #13178
Canyon Orange #13238
Deep Burgundy #13128
Graphite #13161
Honey Brown #13163
Lamp (Ebony) Black #13067
Light Mocha #13241
Melon #13245
Slate Grey #13068
Soft Black #13155
Teal Green #13107
Warm White #13239
Sparkling Accents Paint Pot Set #13525

Surface:

Sled with Metal Runners – Medium #60077

Misc. Supplies:

DecoArt Multi Purpose Sealer #87392
DecoArt Acrylic Spray Sealer/Finisher – Matte #70836
DecoArt Snow Tex #87333
Glamour Dust #83194
Small Sanding Pad, Fine/Medium #70794
Snowflake Stencil #70815 or #70839
Soft Grip Embossing & Stylus, set of 3 #70125
Sponge Roller #70210
1" Foam Brush, set of 4 #70171
Brush Basin #70174
Royal Palette Paper #70560
Pro Art Tracing Pad #83176
Gray Graphite Paper #70141
White Graphite Paper #70139
Painter's Tape
Thick Glue

The following are optional additions to the project.

Small piece of Ecru lace
1 Brass Snowflake Charm
1 Rusty Tin Snowflake
1 White Snowflake Button
1 Small piece of Silver Tinsel Ribbon
2 Small Pearl Seed Buttons
1 Oval Woodsie...1 Small Rectangle Wood (to mount oval sign to sled)

1 Medium Laser Cut Snowflake
1 Small Laser Cut Snowflake
Scrap Piece of Cotton Twill Tape

Brushes:

Papillon by the Artist's Club

Glaze Wash, size ¾" #20102
Shader, size 12 #20131
Round, size 3 #20159
6 Piece Filbert Set #20122 (used for basecoating)
Liner, size 2 #20148
Highlighter Set #20173
Stipple Set #20172
Stencil Brush Set #20189

Techniques:

Using a Roller brush:

To use the roller brush slightly moisten the roller with water, squeeze out any excess water. Pour the basecoat color onto your palette and roll the brush back and forth to fully load. Now place the roller on the surface, roll in different directions until you feel the paint pull and remember to work out all the bubbles. Run your hand over the surface. You should feel an eggshell texture. You do not want to work on a bumpy or rough surface. Lightly sand if needed. Repeat the process until you have good coverage. On the last coat I begin to roll and pull going in one direction. This helps to smooth out any ridges. Always roll with a very light touch because this will help to eliminate bubbles. If you bear down too hard as you apply the paint, you might even scratch the surface with the plastic roller brush holder. Now you will find that your basecoat will go on much easier because you have established a slight texture. When you basecoat with a brush, you will find that you get brushstrokes and the surface is a lot sleeker. With a rolled surface, the initial base coat will take less application of paint. Practice and enjoy the method.

Scumble/Same as Dry Brushing:

Use a dry (do not put any water in the brush) blending brush for scumbling. Should the brush become wet, squeeze out all traces of water on a paper towel. Any moisture in the brush will create a "hole" in the paint as you start to scumble. Pick up the designated color on your brush, then work it out on your palette until there is very little left in the bristles. As you apply the paint to the surface, do not hold brush straight up and down, as you will create a polka dot effect. Instead, lay your brush parallel to the surface and lightly rub back and forth until you achieve the correct lightness or darkness. Repeat until desired look is achieved. Less is better and build the color gradually.

Distressing/Sanding:

Allow an area to dry, and then take your sanding disc or stick and sand with pressure until you achieve the desired look. If you have a hard time removing the paint, slightly moisten the area with a wet paper towel and proceed with the sanding. Remove as much paint as you want. With distressing, you will achieve texture, additional accents, and value changes. Distressing eliminates having to add a lot of shading, highlights and details.

Stippling:

Moisten the stipple brush slightly with water and blot on a paper towel. You might need to fluff

the brush hairs out a little with your fingers. Dip the brush into the designated color and tap on your palette to work out excess paint before applying to your surface. If you see, many bubbles you have too much water in your brush and you need to squeeze out the excess on a paper towel. Place your brush on the surface and tap up and down lightly—this is like pressing a key on your computer keyboard repeatedly. You would not pound at it. An area will become patchy if you press down too hard and the stippling needs to appear very airy. If you get a little heavy handed in any spot, simply pick up the original basecoat color and lightly stipple over the area you wish to correct. Certain colors do not work well together, so be careful that you do not start to create a muddy look.

Wash:

When you see the word wash, think of something translucent. I also think of a wash as applying colored water. Dip your brush into water and lightly blot on paper towel—you must have a lot of moisture in your brush in order for the paint to stay translucent. If your paint feels like it is pulling on the surface, add more water. Tell yourself less is better as you can always go back and reapply any areas that are too pale.

Preparation:

Using a sanding disc, sand entire wooden sled and then wipe clean with a damp paper towel. Using a sponge brush, apply one good coat of wood sealer to all surfaces and dry thoroughly so that the sealer has time to penetrate the surface. Sand again lightly and wipe clean.

Using a sponge roller brush, apply two good coats to entire front of the bottom section of sled with Blue Mist. Using a flat brush base entire back of sled Blue Mist. Using a sponge roller brush, apply two good coats to top section of sled Light Mocha, and then using a flat brush base back side of top section Melon.

Using a flat brush, paint all edges of the bottom and top sections with Melon.

Using a flat brush that matches the size of the checkered trim (refer to base coat guide) and paint all checks around edges of top section Light Mocha (see photo on page 10). Using a sanding disc, distress (sand) through all checks and then wipe clean with a damp paper towel.

Base small rectangle Woodsie Melon and backside Blue Mist. Base oval Woodsie Light Mocha. Base entire edging and back of oval sign Melon. Base medium wood Laser snowflake Melon and small snowflake Blue Mist.

Trace base coat pattern onto tracing paper. Lay pattern onto sled, and then use Painter's tape to secure. Slip a piece of graphite paper underneath tracing paper, and using a stylus transfer only main pattern lines, basecoat as follows:

Hat: Soft Black

Face: Slate Grey

Collar/Cuffs: Light Mocha

Mittens: Deep Burgundy

Jacket: Melon

Dress: Light Mocha

J Square Patch: Melon

Y Square Patch: Blue Mist

Painting Instructions:

NOTE: As you are painting refer to the Value Placement chart (page 13) to guide you through your shading, highlighting, tints and cast shadows.

Dress:

Using a sanding disc vertically distress (sand) entire dress until you begin to notice the Blue Mist peeking through the base coat on the dress. Wipe clean and determine if you have removed enough paint. Repeat if necessary.

Using the snowflake stencil you selected and using a stencil brush begin to stencil the design to entire dress with the following values: Melon...Blue Mist...Do not carry too much paint in your brush.

Make sure you select different snowflake patterns on the stencil to create a variety on the dress. After you have completed the stenciling go back to darken some areas on the Melon snowflakes with Deep Burgundy and the Blue Mist snowflakes with Teal Green. Dry thoroughly and then repeat distressing over all snowflakes. It helps to recede them into the background. The Craft Twinkles will be applied to the center of the snowflakes later in the design.

Using a 3/4" Glaze Wash brush and randomly float tints around right/left side of dress Honey Brown. Keep it subtle. Using the same size brush, float shading along right/left sides with Teal Green + a touch of Soft Black—work this value out well on your palette before you proceed to float so it's not too dark.

Scumble or tap to create highlights (going with the



shape of the dress) with Warm White.

Float shading underneath jacket (not too wide) with Teal Green + Soft Black and then repeat with same value to further darken.

Float shade on the lower left and right areas with Deep Burgundy. Repeat to further darken.

Using DecoArt Craft Twinkles Silver glitter paint and a stylus, paint a dot in the center of snowflakes. You might need to repeat the same process to build up the paint. Also it takes a little longer for this paint to dry. Just be careful not to put your hands into the wet paint.

Jacket:

Using a stippling brush, stipple texture on entire jacket using Light Mocha and then proceed with additional texture with the following values: Blue Mist.... Teal Green.

If any areas get to dark or you might not like an area, repeat stippling with Melon—helps to tone and recede stippling into background. Continue stippling (lightly) with Deep Burgundy.

Scumble to create bends, pleats and dips on both sleeves with Deep Burgundy—keep subtle and not too harsh.

Float shade on all areas with Deep Burgundy. As you are shading and before the paint dries, tap at paint with corner edge of brush to create further texture.

Repeat to further darken in shaded areas with Soft Black. If you have a hard time controlling this value as you float, try repeating over same areas with just water. It helps to soften the color into the background and becomes easier to control. Do this before the paint dries.

Paint a line down entire center Teal Green or Soft Black if not dark enough.

Paint a thicker line along the edges of jacket and on either side of the center line with Blue Mist.

Using a liner brush, randomly paint highlights (accents) along band edging with Warm White.

Outline band edging (along jacket side) Deep Burgundy—keep thin.

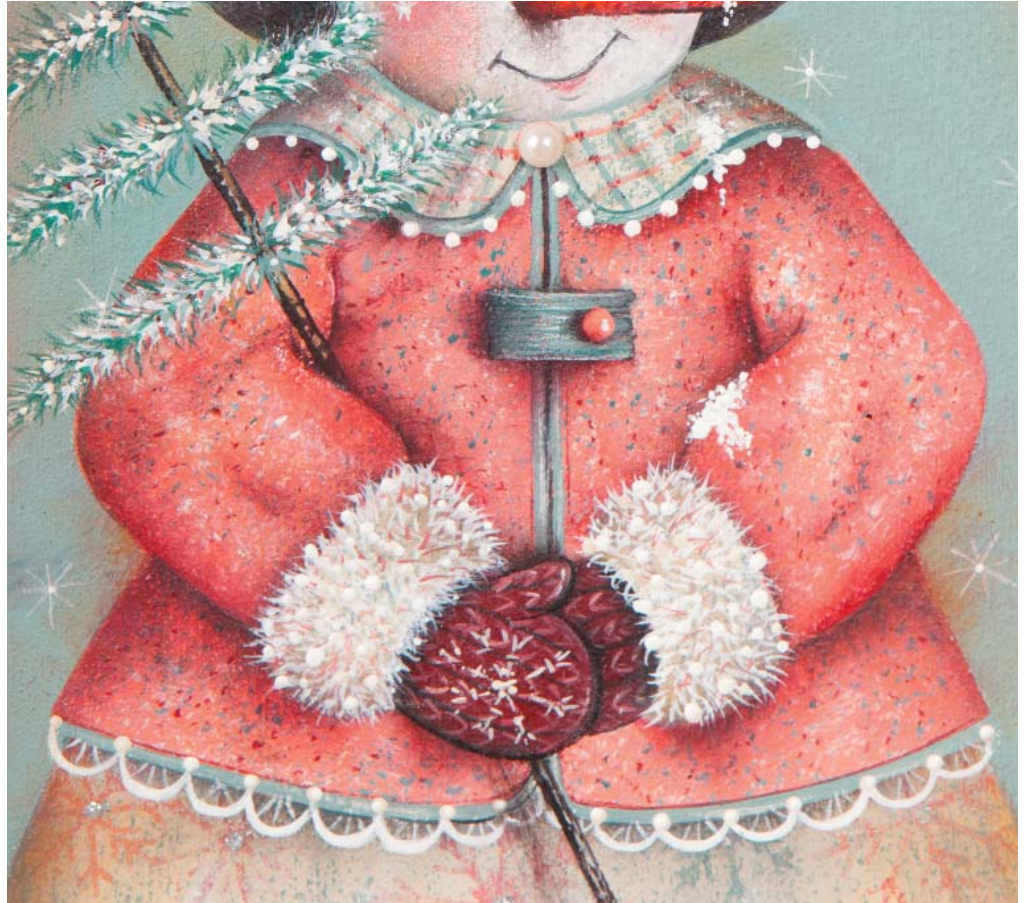
Lace Trim (Jacket):

Using a liner brush, paint all loops Warm White. Paint accent lines inside loops Warm White. Using a stylus, paint dots Light Mocha. Randomly highlight dots Warm White.

Tab (Jacket):

Base coat tab Blue Mist. Lightly distress (sand) horizontally.

Using a liner brush, paint accent lines on tab with Teal Green and Melon. Paint highlight accent lines in center area, and top/bottom with Light Mocha.



Softly outline entire tab Soft Black.

Float shading on tab (left side) Soft Black.

Float shading to the left of tab (onto jacket) with Deep Burgundy and then above and below tab Soft Black.

Base coat circle button with Melon. Shade to the left of the button (onto tab) Soft Black—keep thin. Float shading on left side of button with Deep Burgundy. Paint dot accent on right side Light Mocha.

Mittens:

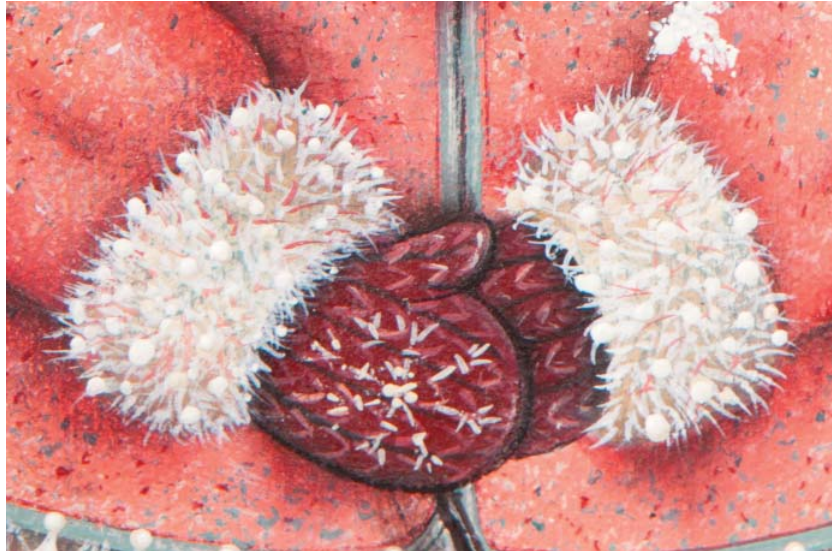
Using a liner brush, paint angled vertical lines onto both mittens Soft Black.

Using a liner brush, paint V's in between lines created above with Melon + Deep Burgundy. Brighten with Melon and Light Mocha—be careful not to get these areas too bright.

Float shading Lamp (Ebony) Black and with the same value randomly outline some sections of the mitten.

Paint snowflake design with Light Mocha and brighten if needed with Warm White.

Using the same values, paint accent lines on mittens—helps to bring some areas forward in the design.



Face:

Scumble in a circular motion to softly fill in face with Light Mocha. You still want to see some Slate Grey peeking through—keep it subtle.

Lightly stipple texture on entire face with Warm White. Dry thoroughly. Using a #12 flat brush, apply a wash over entire stippled area—helps to soften stippling into background.

Randomly float tints, Honey Brown—very subtle. Repeat same areas with Melon.

Float shading on all areas with Slate Grey—not too wide.

Face Features:

Base coat eyes Graphite.

Scumble to create cheeks Melon + Deep Burgundy. Paint sparkle accents on both cheeks are Warm White.

Paint mouth, smile and chin lines with Graphite. Base coat lip Melon.

Using a liner brush, tap highlight (accents) above mouth Warm White.

Thinly float shading to the lower left/



right side of eyes (onto face) Soft Black.

Paint eyelashes Lamp (Ebony) Black and eyebrows Soft Black.

Float soft highlights underneath both eyes Warm White.

Float highlights on left side of both eyes (away from edge) Slate Grey and paint sparkle accents Warm White.

Float shading underneath hat brim and lower left area (above collar) Soft Black—not too wide.

Nose:

Base coat nose Canyon Orange + Melon.

Float shading Deep Burgundy. Softly outline with Soft Black. Repeat shading at back edge only Soft Black.

Using a liner brush, paint accent marks down top of nose with Melon + Light Mocha.

Float cast shadow underneath nose Soft Black—work this value out well on your palette before you apply it to the surface.

Using a liner brush, tap texture along back edge of nose Warm White—helps to anchor the nose into face.



Cuffs:

Distress in a circular motion until you begin to see the Blue Mist background—wipe clean.

Float shading on right/left side Honey Brown. Repeat shading in the same areas with Teal Green + Soft Black. After floating and before paint dries, take the corner edge of your brush and tap at the paint to create texture. Randomly float tints with Deep Burgundy.

Using a liner brush, paint tiny lines with Light Mocha and Warm White and then paint some accent lines with Teal Green...Blue Mist....Melon and even use Deep Burgundy.

Paint dots Warm White.

Collar:

Distress entire collar until you begin to see the Blue Mist background.

Paint vertical lines going with the shape of the collar Blue Mist. Paint wavy horizontal lines Melon.

Paint accent marks on the intersected lines with Deep Burgundy.

Using a liner brush, paint highlight lines between the Blue Mist lines create above with Warm White.

Paint a thick line to create edging with Blue Mist. Outline inside area of edging Teal Green. Paint highlight accent marks along edging Warm White.

Paint all dots Warm White.

Hat:

Scumble to create dark bends with Lamp (Ebony) Black. With the same value float shading on all areas.

Scumble and float all highlights with Melon—not too bright.

Using a liner brush, randomly paint accents in the highlighted areas with Melon.

Snow Accents:

Using a liner brush, pick up a good amount of paint onto your brush and then tap on the brim of hat to create a pile of snow with Warm White. Drizzle paint onto brim. Using a little less paint add some snow to the tip of nose, collar and sleeve. Repeat the snow on the brim and sleeve if you find the snow is not built up enough.



Pole:

Base coat entire pole Soft Black. Make sure pole remains straight. Lightly distress down center of pole.

Outline entire pole Lamp (Ebony) Black. Paint branches Soft Black.

Paint pine needles in the following order: Antique Teal...cut into needles with Blue Mist on the background area and Melon on the jacket area (helps to create space) then Teal Green, Warm White, or add any other colors of your choice.

Paint dots (berries) with Warm White, Melon, Deep Burgundy.

Scumble a tiny cast shadow underneath bottom left branch/needles Soft Black.

Also scumble cast shadow to the left of the bottom portion of pole (near mittens) Soft Black.

Background Tints:

Float tints on bottom portion of sled, along top edges and right/left upper corners with Honey Brown and then Melon.



Repeat only at the right/left corners with Deep Burgundy.
Randomly float tints behind snowman (onto background) Honey Brown. Repeat some areas using Deep Burgundy.

Snowflake Accents:

Paint all snowflakes and dots around background, Warm White.

Joy Patches:

J Patch:

Stipple texture on entire patch Melon...Blue Mist...Teal Green...Melon (used to soften)...touch of Deep Burgundy.

Float shade the lower left/upper right corners with Deep Burgundy. Tap at paint to create texture. Float shading around entire outside edges of patch Deep Burgundy + Soft Black—not too wide or dark.

Paint fringe with the following values: Deep Burgundy...Melon...Teal Green...Light Mocha

Paint stitch lines Warm White.

Base coat letter Light Mocha. Distress entire letter and/or paint lines onto letter with Melon—helps to create further texture. Paint accent lines Warm White—helps to brighten letter.

Randomly float shading and outline letter Deep Burgundy or Deep Burgundy + Soft Black.

Y Patch:

Stipple Light Mocha...Teal Green...Melon.

Float shading around entire patch onto background Antique Teal.

Paint fringe with following values: Deep Teal...Blue Mist...Light Mocha...Melon.

Float tints upper right/lower left corners in Melon + Honey Brown. Tap at paint to create texture.

Float shading left side only, Teal Green. Once again tap at the paint.

Stitch lines Warm White.

Paint letter Y Light Mocha. Distress entire letter and or take Blue Mist and paint lines onto letter.

Paint accent lines Warm White

Randomly float shading and outline letter Antique Teal.

Wreath:

Paint needles in the same manner as tree needles.

Paint dots Warm White and Deep Burgundy.

Float shading inside wreath and outside lower left with Honey Brown and then Deep Burgundy.

Tap some Craft Twinkles Silver glitter paint on needles.

Background Tints:

Float tints on upper section with Honey Brown and then Deep Burgundy. The bottom left/right corners should be the darkest.

Snowflake Sign:

Float shading on right/left side with Honey Brown + Deep Burgundy. Repeat shading with Antique Teal—go easy.

Paint all letters Deep Burgundy. Randomly outline in Soft Black. Lightly distress (horizontally) through all letters.

Paint snowflake accents Warm White.

Finishing Touches:

Distress both laser cut-out snowflakes. Glue small snowflake onto medium snowflake. Press firmly

to secure.

Glue the rectangle Woodsie to backside of oval Woodsie. Make sure it is placed in the center and then press firmly to secure. Dry thoroughly.

Place a good amount of glue to backside of rectangle and glue onto backside of sled. Make sure the sign is positioned correctly. Press firmly to secure.

Base coat a small strip of cotton twill tape with Blue Mist. Dry thoroughly and then glue over the rectangle Woodsie—helps to further secure sign to the sled. Once again press firmly into place.

Glue a small pearl seed button onto center of small snowflake.

Glue a small pearl seed button onto collar area.

Using a stencil brush base coat rusty tin snowflake Warm White and while still wet thickly apply Snow Tex onto snowflake. Sprinkle Glamour Dust onto snowflake and shake off excess. Set aside to dry thoroughly.

Glue onto tip of pole. Bend some tips upward on snowflake.

Cut a piece of tinsel ribbon and glue it onto the backside of a snowflake button. Apply a good amount of glue to the backside of tinsel ribbon/button and then glue onto hat brim. Press securely onto surface.

Lightly base coat a brass snowflake charm in Melon. Float tints on all tips with Blue Mist. Paint snowflake design and dot in center of charm Warm White. Glue inside wreath. Cut a piece of ecru lace, tie into a bow. Glue at top of wreath.

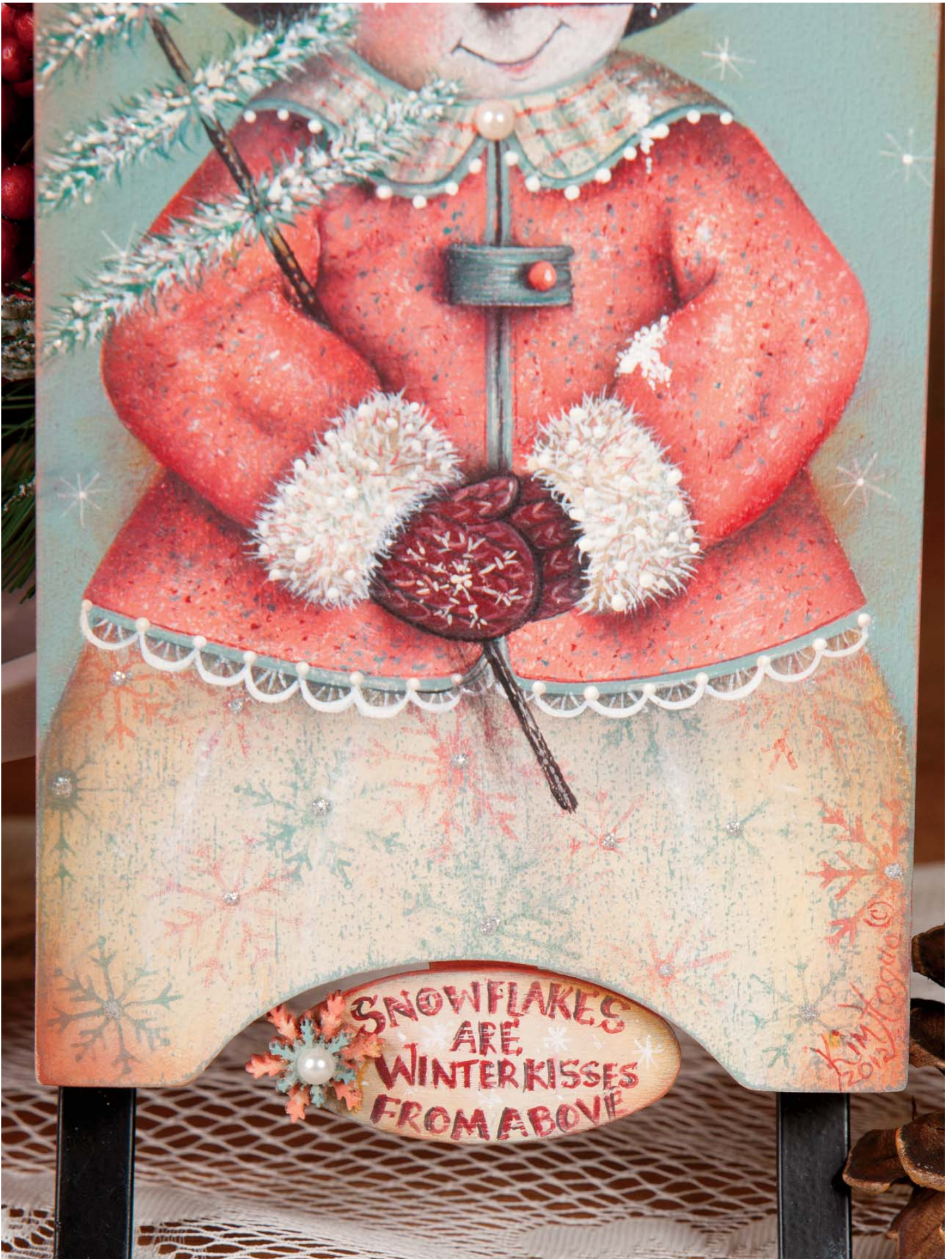
Finishing:

Apply several coats of matte spray varnish to entire sled, allowing adequate drying time between applications. When you are spray varnishing, it is very important to lay the project flat (if possible) to help prevent any drips. I always like to start spraying on the back of the project, as it is better to make mistakes on the back than on the painted area. Also to prevent drips, do not spray too close to the piece and do not stay in one area too long. Move the can of spray back and forth to completely cover the surface.

Be careful when you are varnishing. It is best to apply several very light coats due to all your embellishments.

Thank you so much for spending your painting time with me. From my studio to yours, I am wishing you a wonderful holiday and winter season.

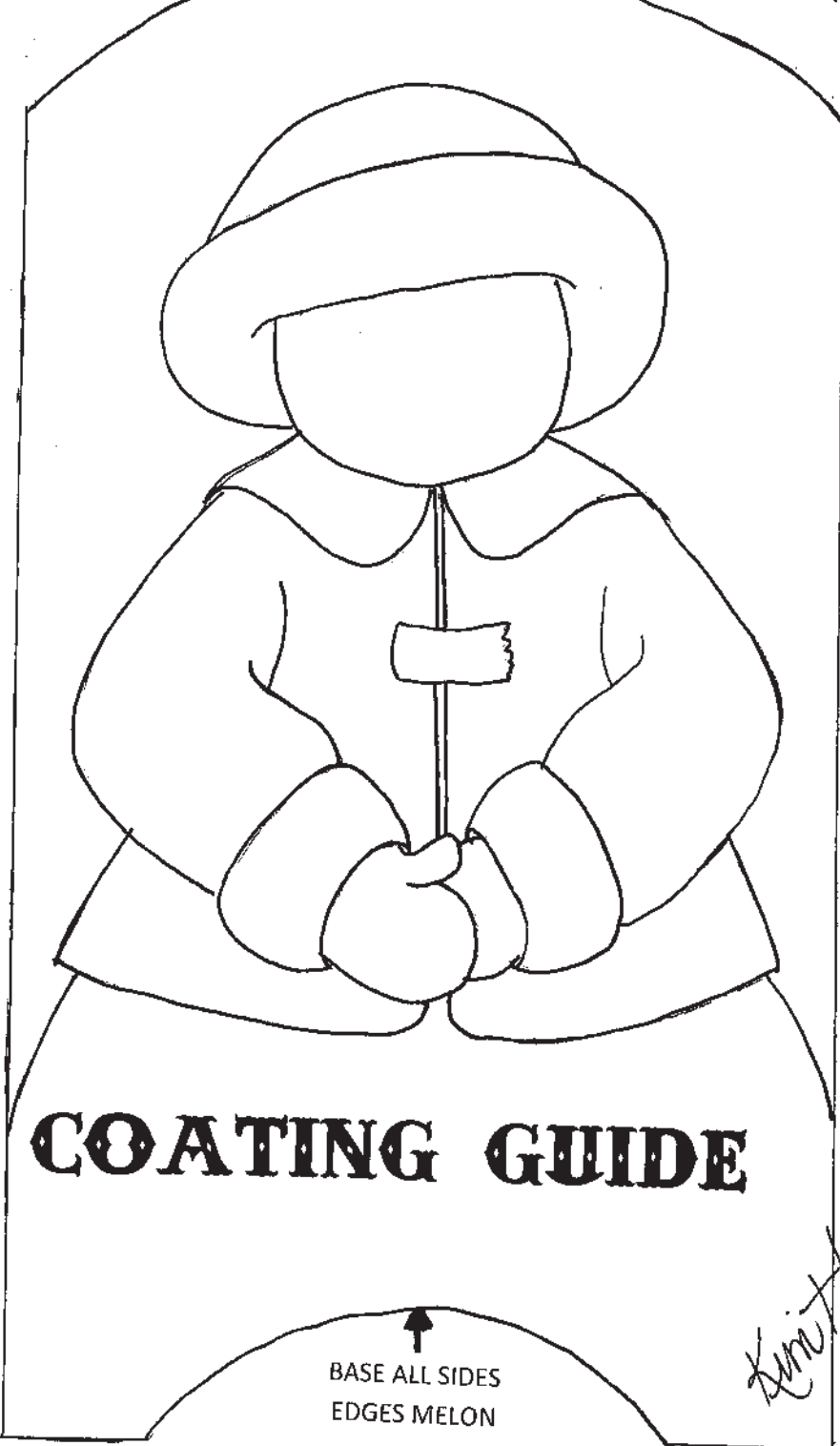
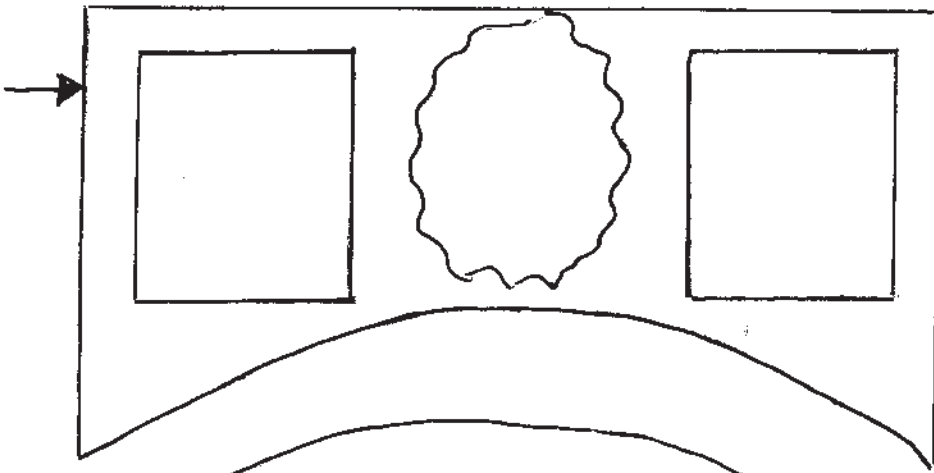




SNOWFLAKES AND WINTER KISSES

BASE COATING GUIDE

BASE ALL SIDE
EDGES LIGHT MOCHA



BASE ALL SIDES
EDGES MELON



REPEAT CHECKERED DESIGN AROUND
ENTIRE EDGE OF TOP SECTION.



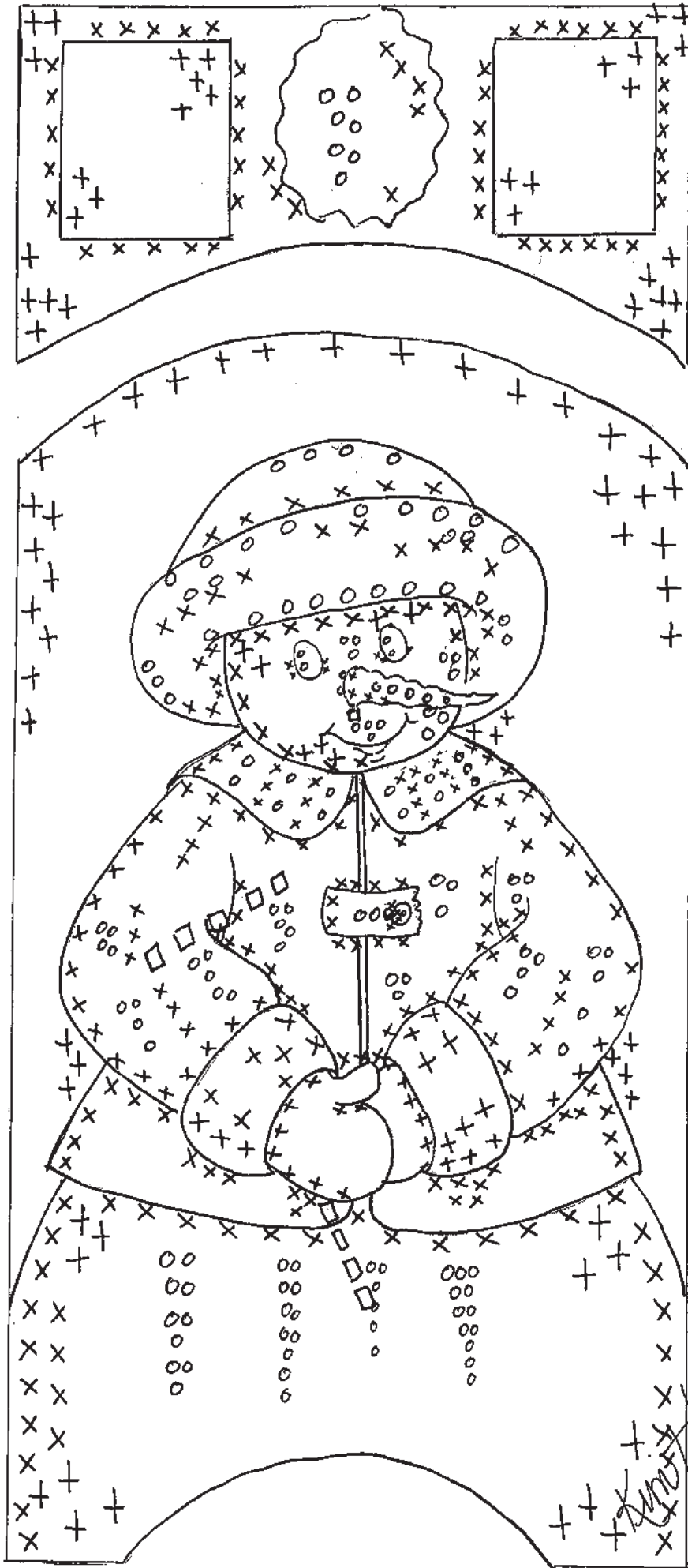
BASE ALL SIDES
EDGES MELON

Knitogue CDA
© 08/24/2012

To ensure your pattern is at 100%, this box should measure 1" x 1" when printed.



VALUE PLACEMENT CHART



XXXX=SHADING

OOOO=HIGHLIGHTING



+++ = TINTS

□□□ = CAST SHADOWS

Erin Toque CDA
© 2012

SNOWFLAKES AND WINTER

KISSES



© 2017 CDA
Dane
08/24/2017

LINE DRAWING



Copyright 2012 Kim Hogue and Crafts Americana Group, Inc.
All Rights Reserved. #331670

No. 

© Artist's Club ®. All rights reserved. For private, non-commercial use only. Please see our web site for terms of use.